

Rudolph the Red Nosed Reindeer

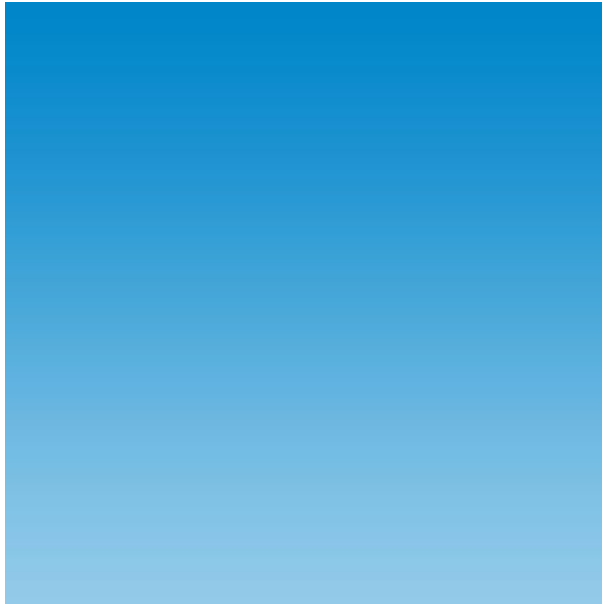
Photoshop Tutorial

Summary:

We will learn how to create Rudolph the Red Nosed Reindeer, so that he can be used in cards, websites, or whatever other graphic projects you are working on.

Step-By-Step Instructions:

1. Open an New document in Photoshop. Apply the following **Gradient**: From color **92CAE9** to **0086CB**.



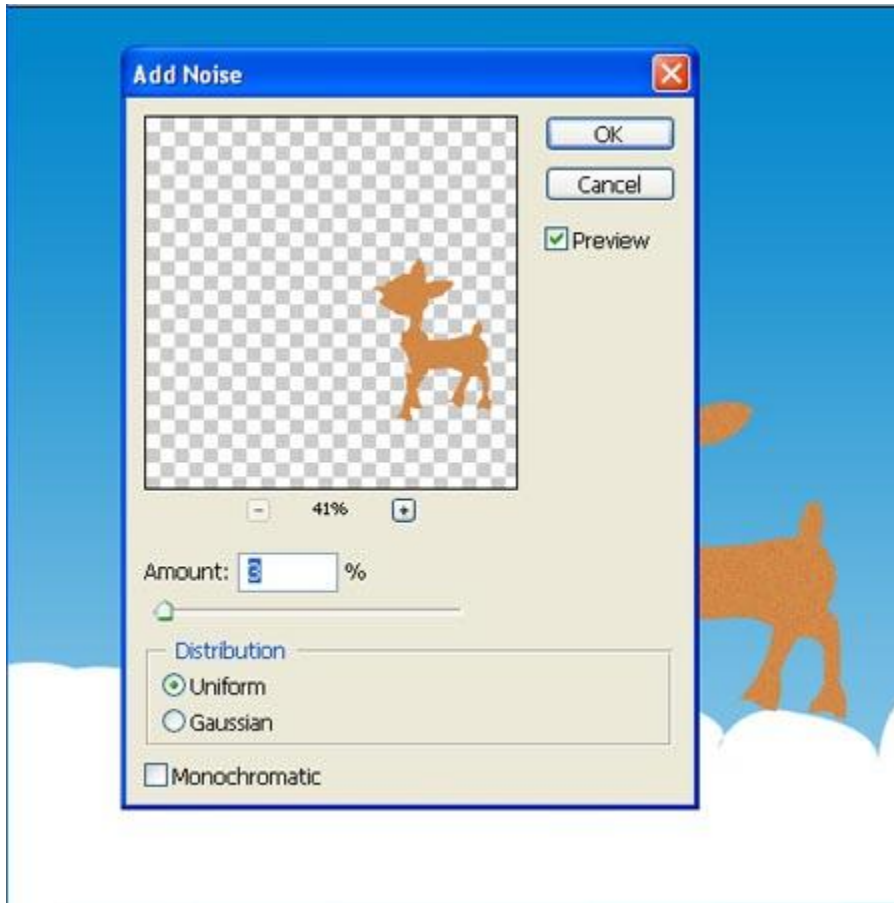
2. Select your **Pen Tool** and draw the shape as show in the picture. It doesn't need to be very similar, but something mountain.



3. Now again with your **pen tool** draw the shape Rudolph. See picture.



4. Now Fill **#CF8D47** color to the Rudolph. Now add little noise to the shape, **filter-Noise-Add noise** with the following setting:



5. Shape is not completed as you can see. Again with **pen tool** draw the rest shapes, see picture below:



6. Now that you have the few more shapes done, we need to apply the **layer style** by double clicking the

layer and set following settings:

Gradient: FFE8AF to B7AC8E.

Stroke Size: 1

Color: 968863

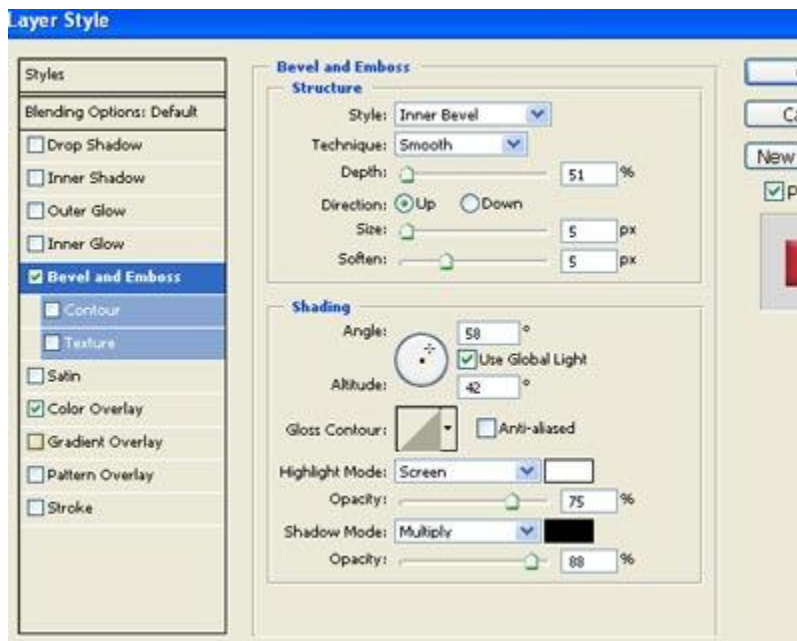
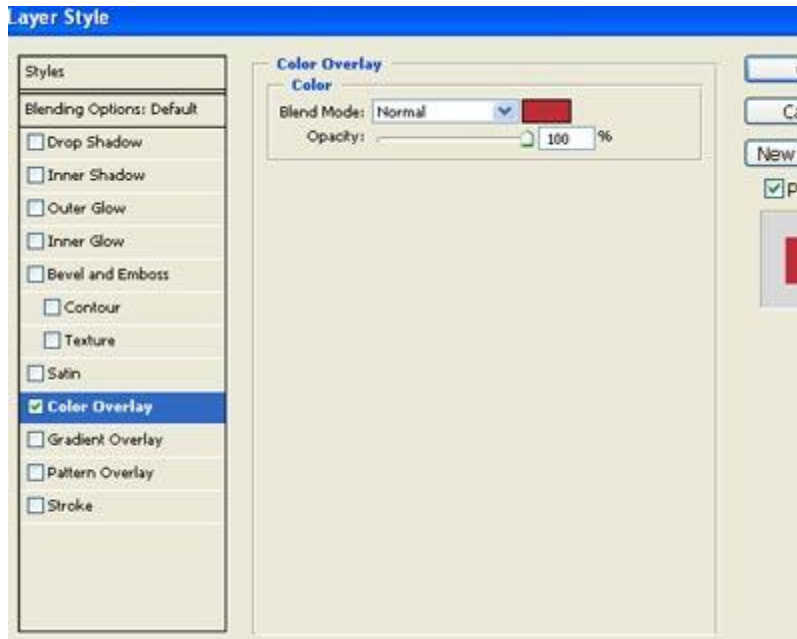
Place the shapes as in the picture.

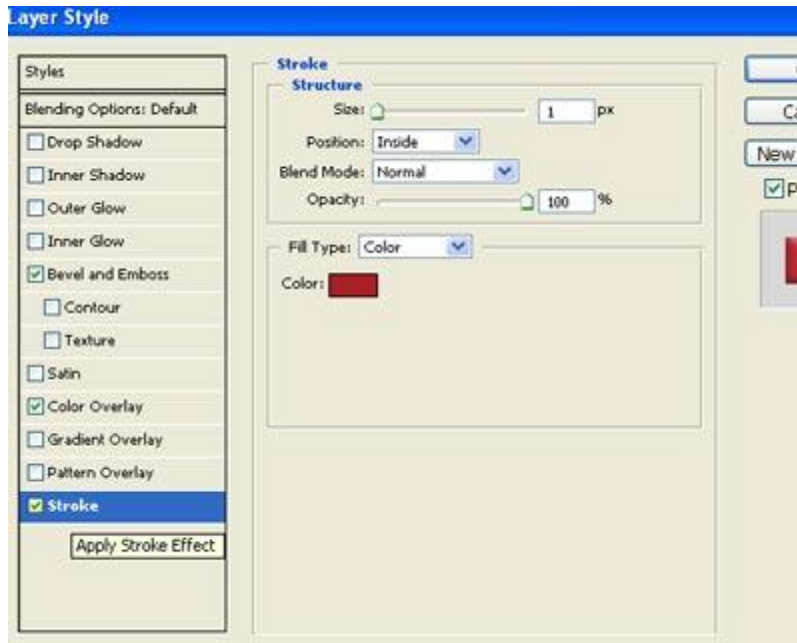


7. Now add a little detail to the mouth and to hear by drawing the following shape with your pen tool. And place it as in the picture.



8. Now with you **Ellipse tool** draw a small circle for the nose kind of thing and apply the following layer style setting:





(The result of the nose should look like the following)



9. Now we would draw the eye for the Rudolph again with the pen tool. Draw the shapes as in the picture and them according.



10. Now you need to draw few more shape that is the shoe part. And apply the following **layer style**
Gradient: 000000-847B7C (at 50%)-000000
Place the shapes as in the picture.



11. Now we would add little outlines, again you need to draw few more line with you pen tool. See picture below:



12. Now **merge** all the outline shape layer that you have drawn just now and apply **Gaussian blur** with the following setting:
Radius: 0.5 px



13. Now we will add little snow to it draw the shape as in the picture which is available in the **custom shapes** and place them randomly and reduce the opacity to 40%-50% which ever you find perfect.

Rudolph

The Red Nose Reindeer

