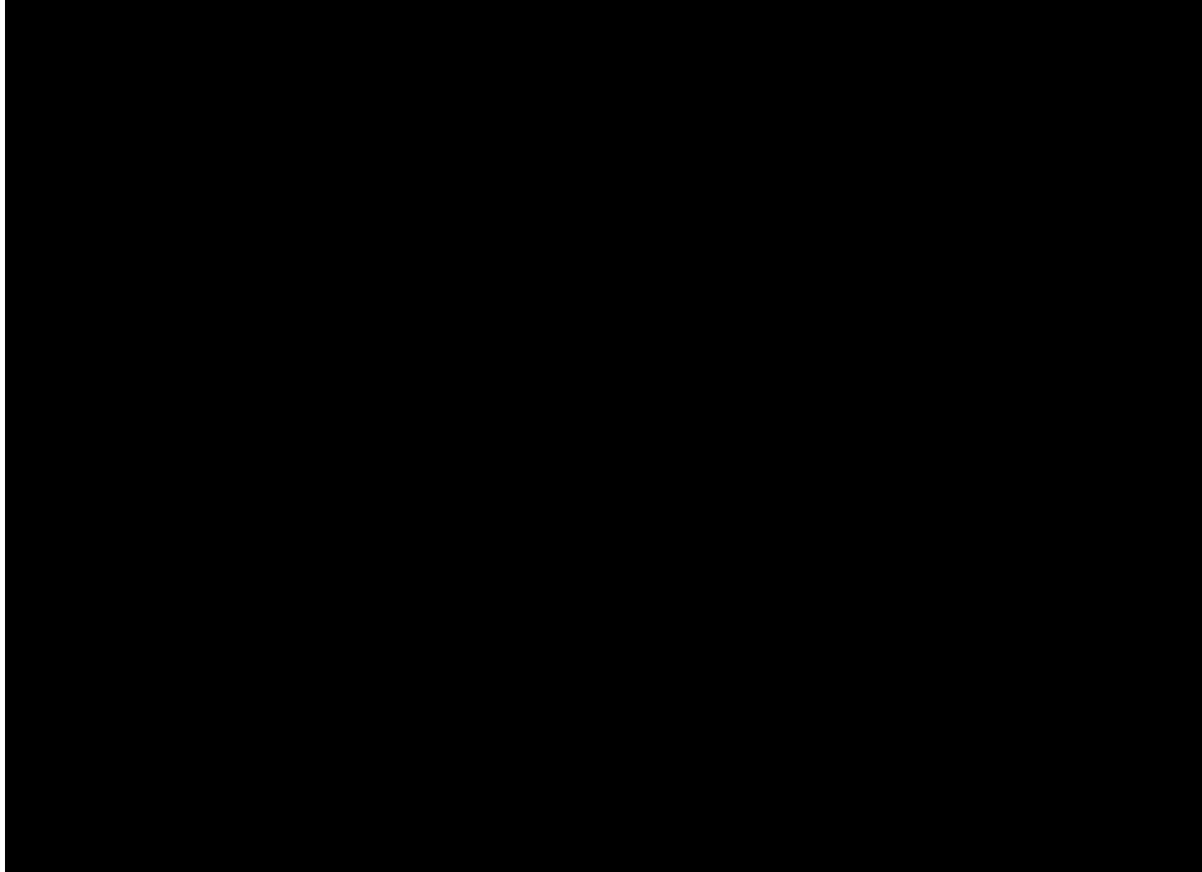
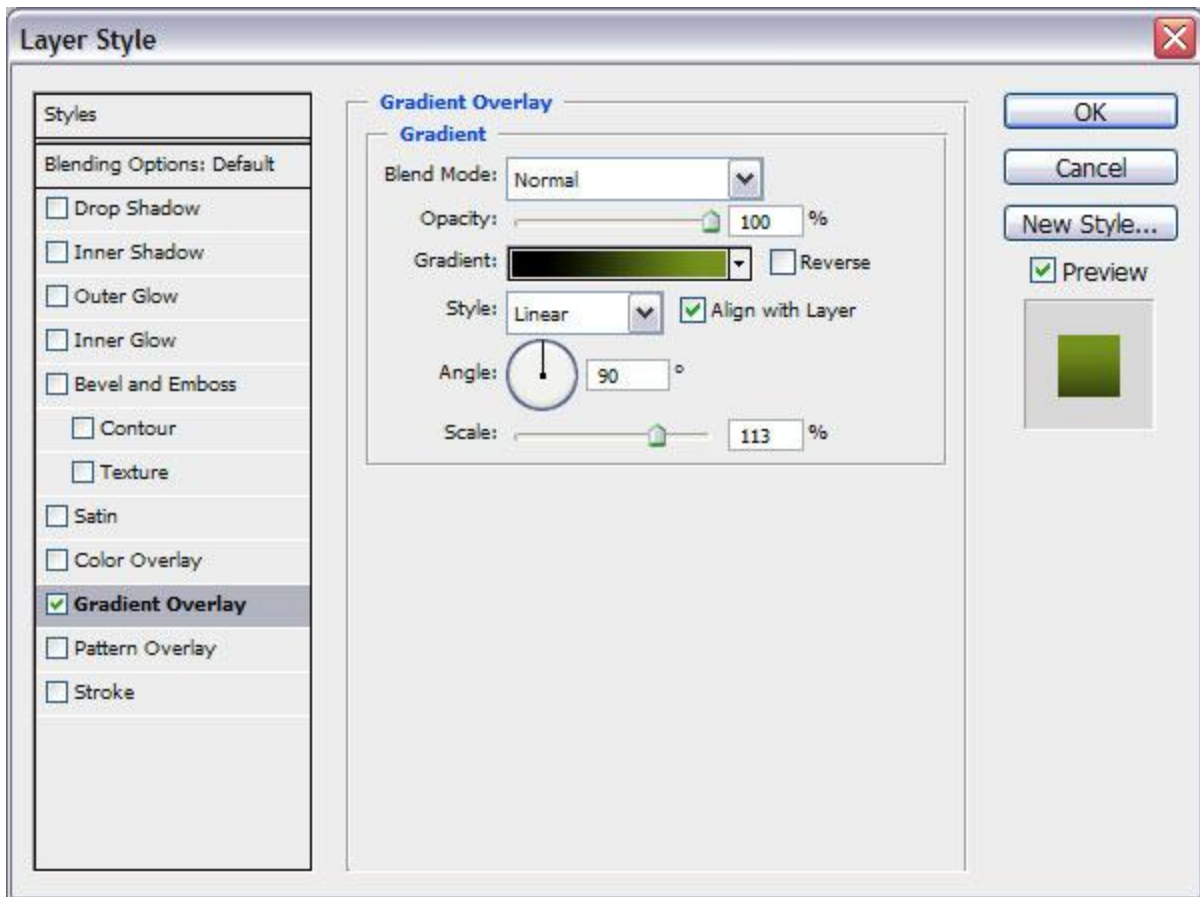


Star Tree

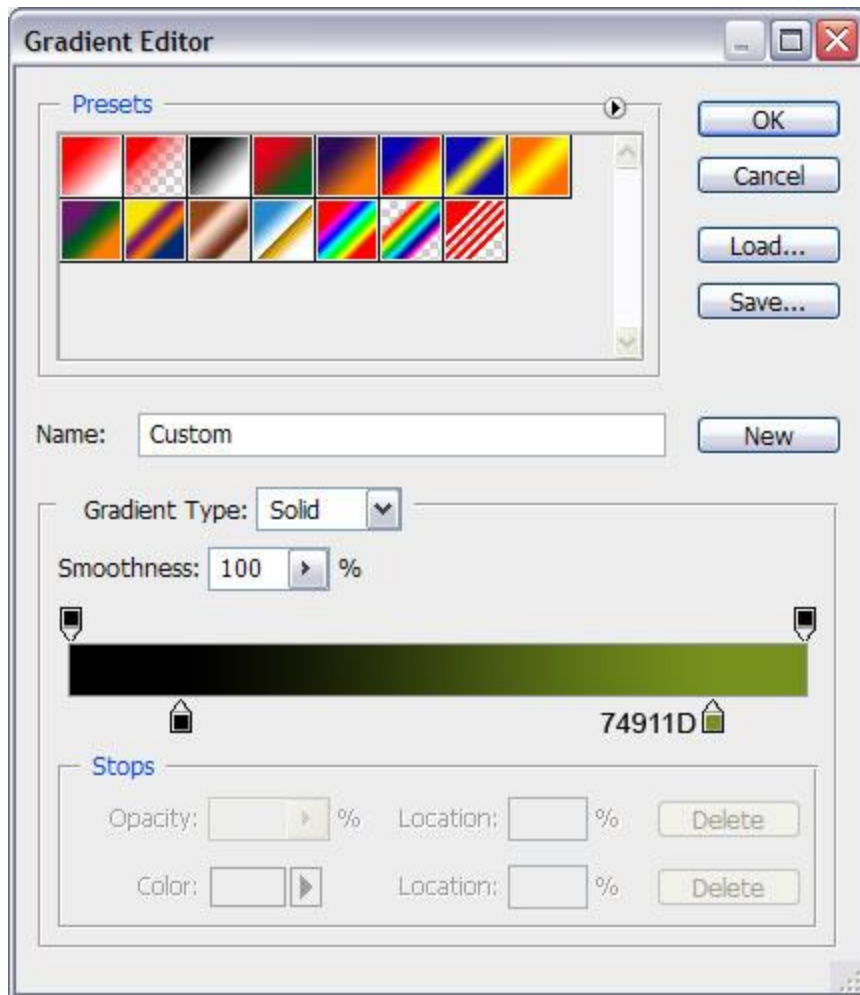
Start working by creating a new document (**Ctrl+N**) in **Adobe Photoshop CS3** with the size **1280px** by **1024px** (**RGB** color mode) at a resolution of **72 pixels/inch**. Use the **Paint Bucket Tool (G)** to fill with **black** color the **new background layer**.



Take now the **Rectangle Tool (U)** and draw a rectangle on the whole canvas. Click on **Add a layer style** icon from bottom part of the **Layers panel** and select **Gradient Overlay**.



Click in the **color bar** to open the **Gradient Editor** and set the **color stops** as shown. Click **OK** to close the **Gradient Editor** dialog box.



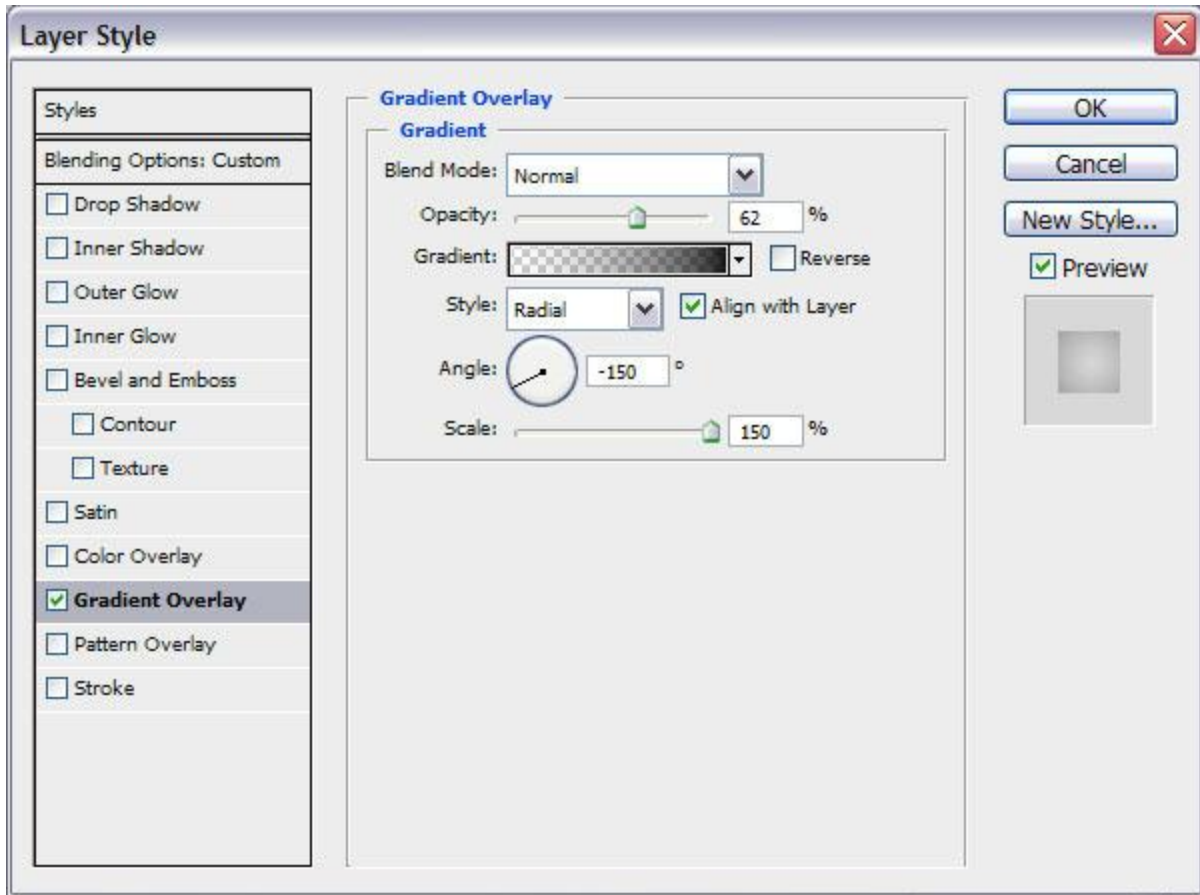
We've got the next background:



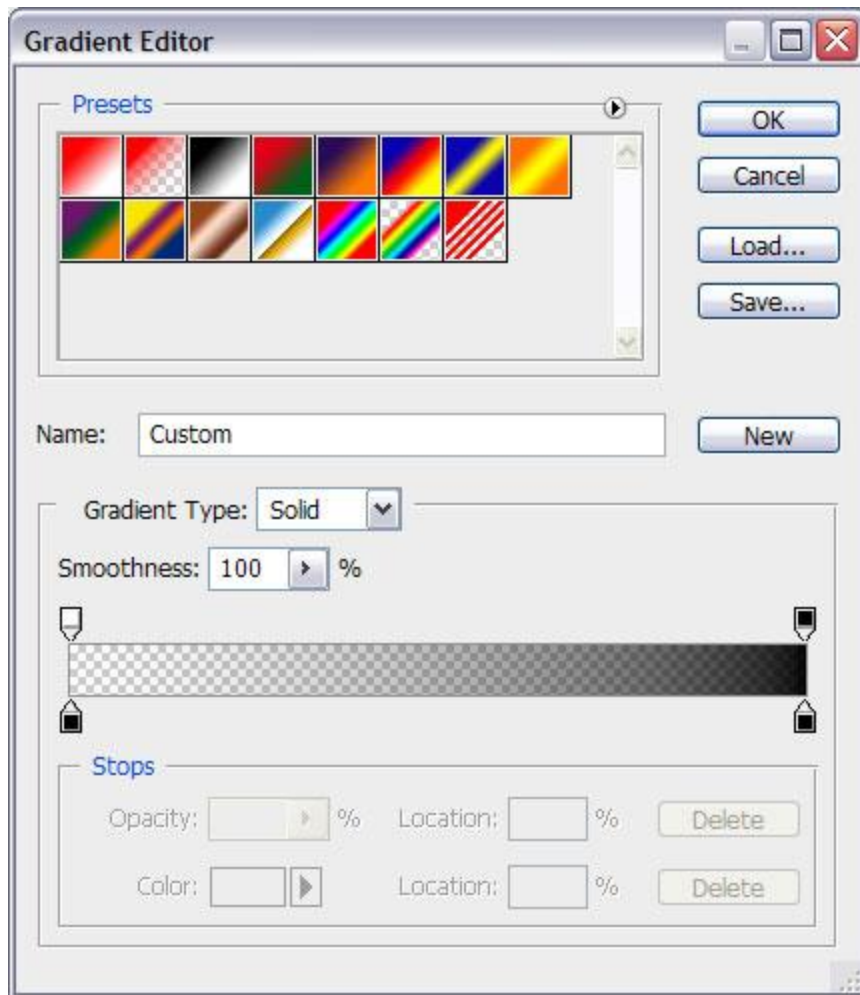
Duplicate this layer and change the **Opacity** to **0%** for copy.



Go to **Layer Style** and change the **Gradient Overlay** settings as shown.



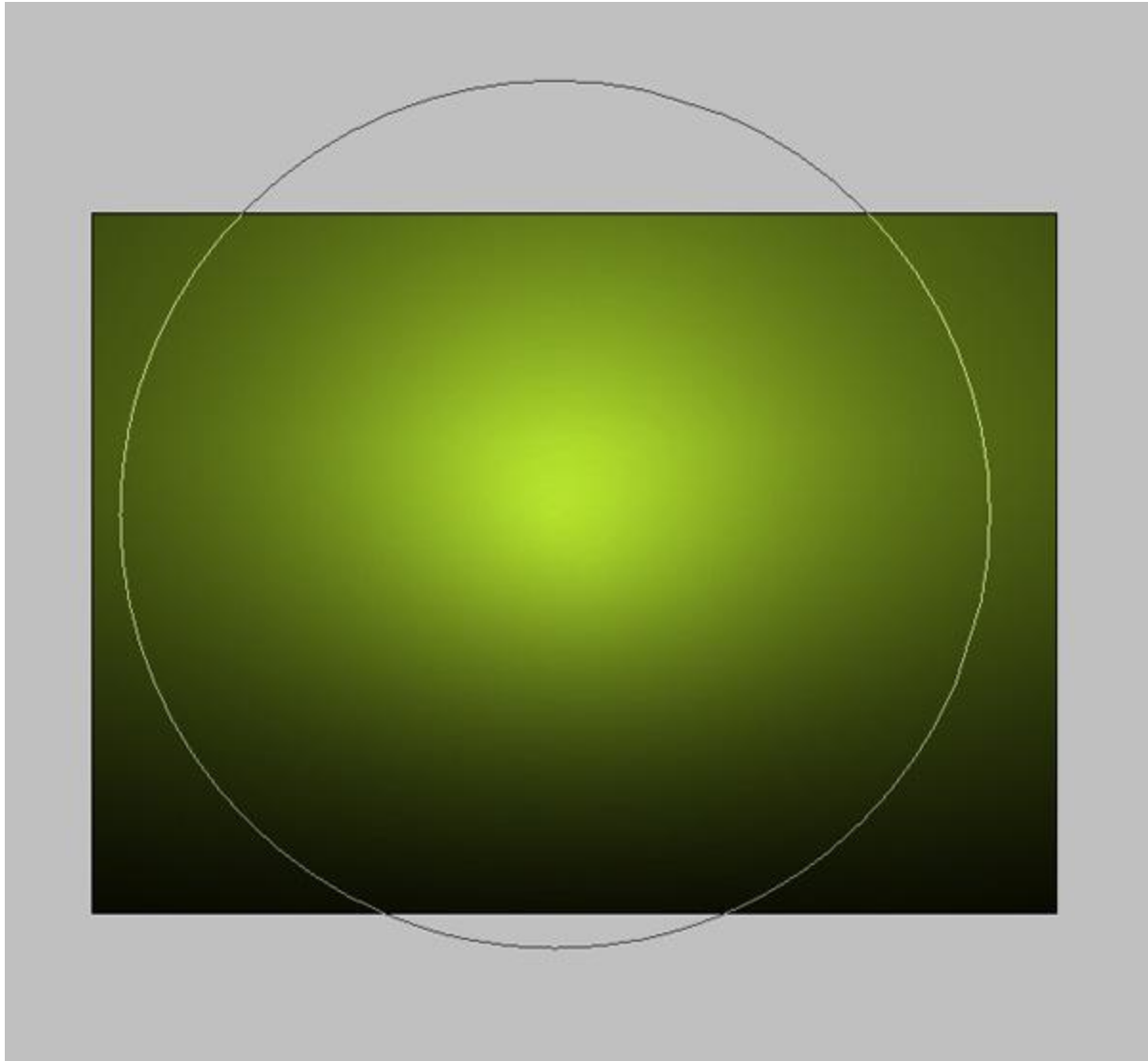
Click in the **color bar** to open the **Gradient Editor** and set the **color stops** as shown. Click **OK** to close the **Gradient Editor** dialog box.



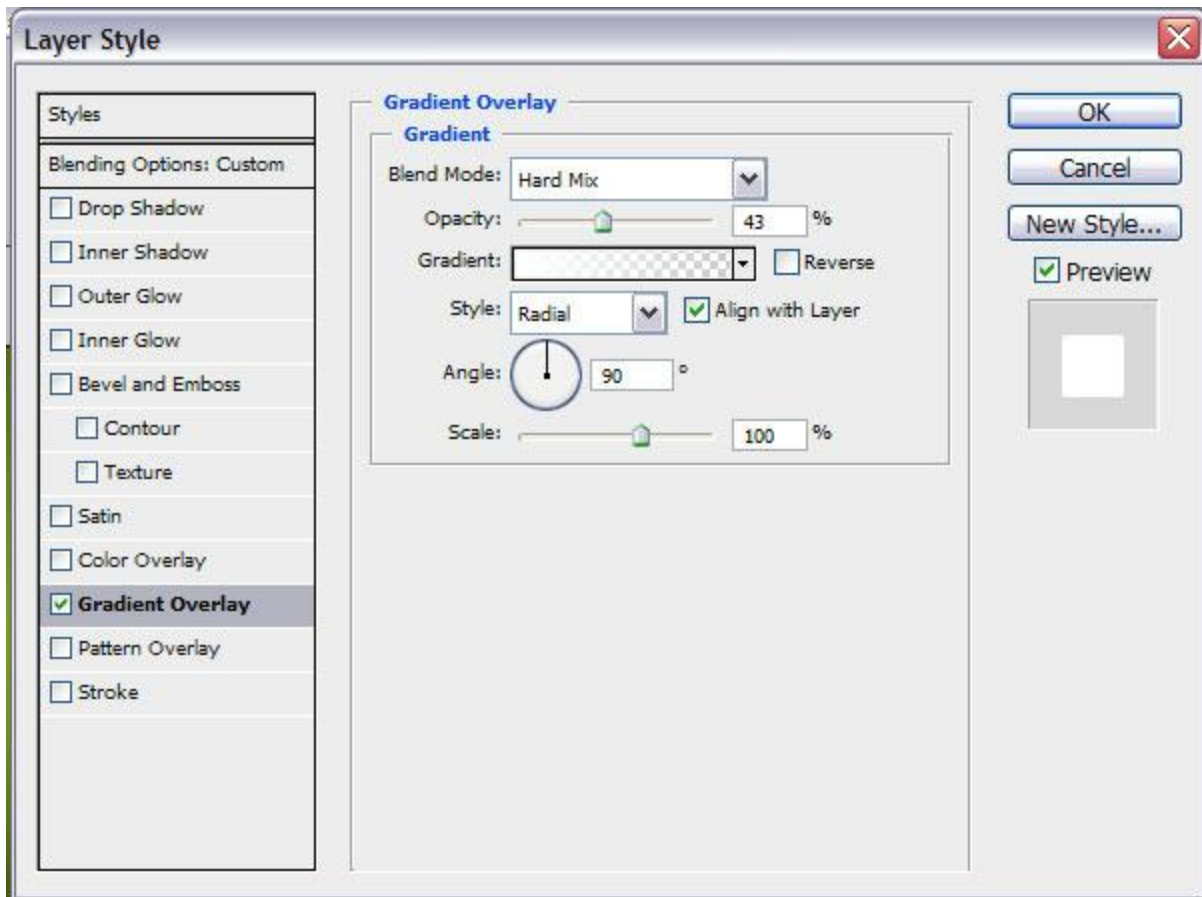
We've got the next result:



Now take the **Ellipse Tool (U)** and draw the next ellipse, set **Opacity** to **0%** for this layer.

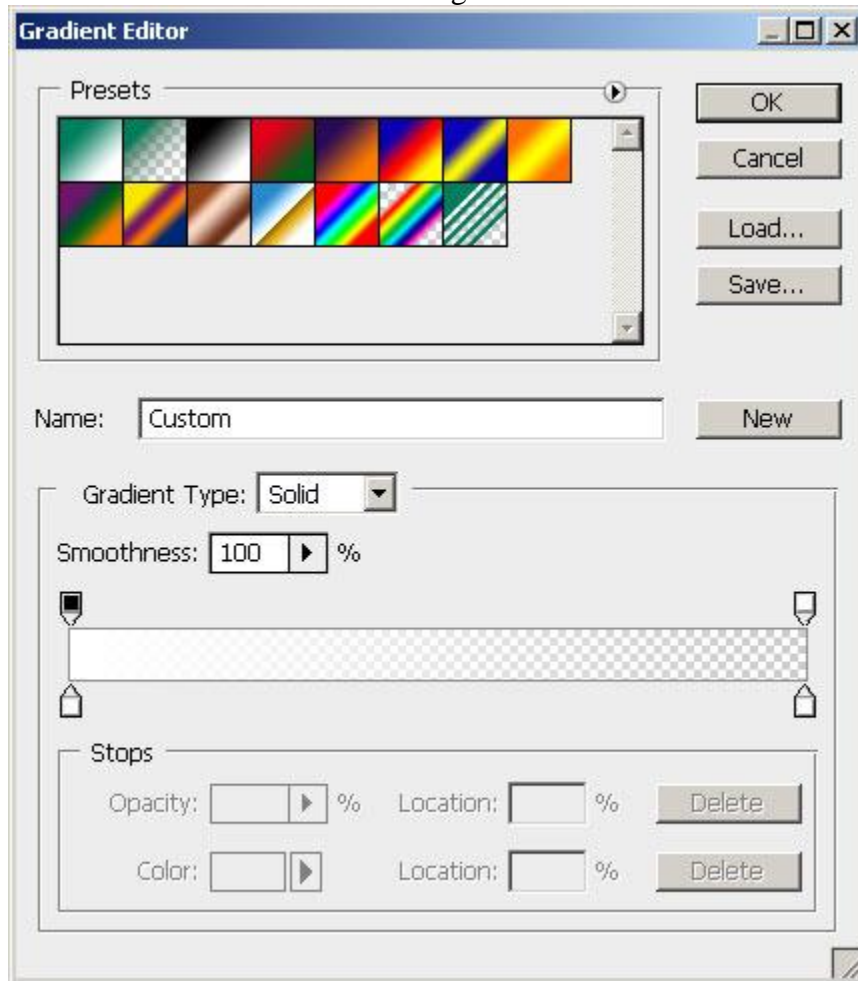


Click on **Add a layer style** icon from bottom part of the **Layers panel** and select **Gradient Overlay**.

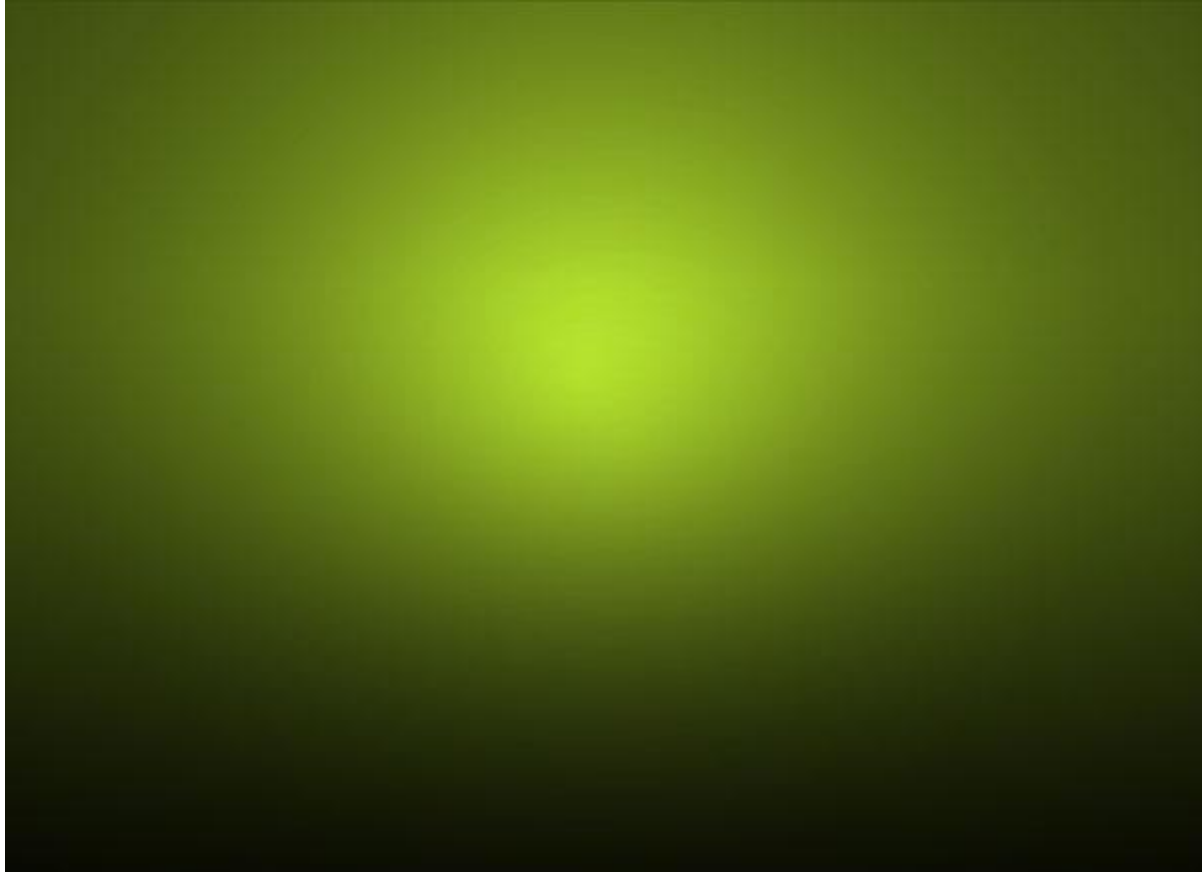


Click in the **color bar** to open the **Gradient Editor** and set the **color stops** as shown. Click **OK**

to close the **Gradient Editor** dialog box.



It's the result you must get on this stage:



Select now the **Pen Tool (P)** and try to represent the contours of a fir tree, like on the next picture:



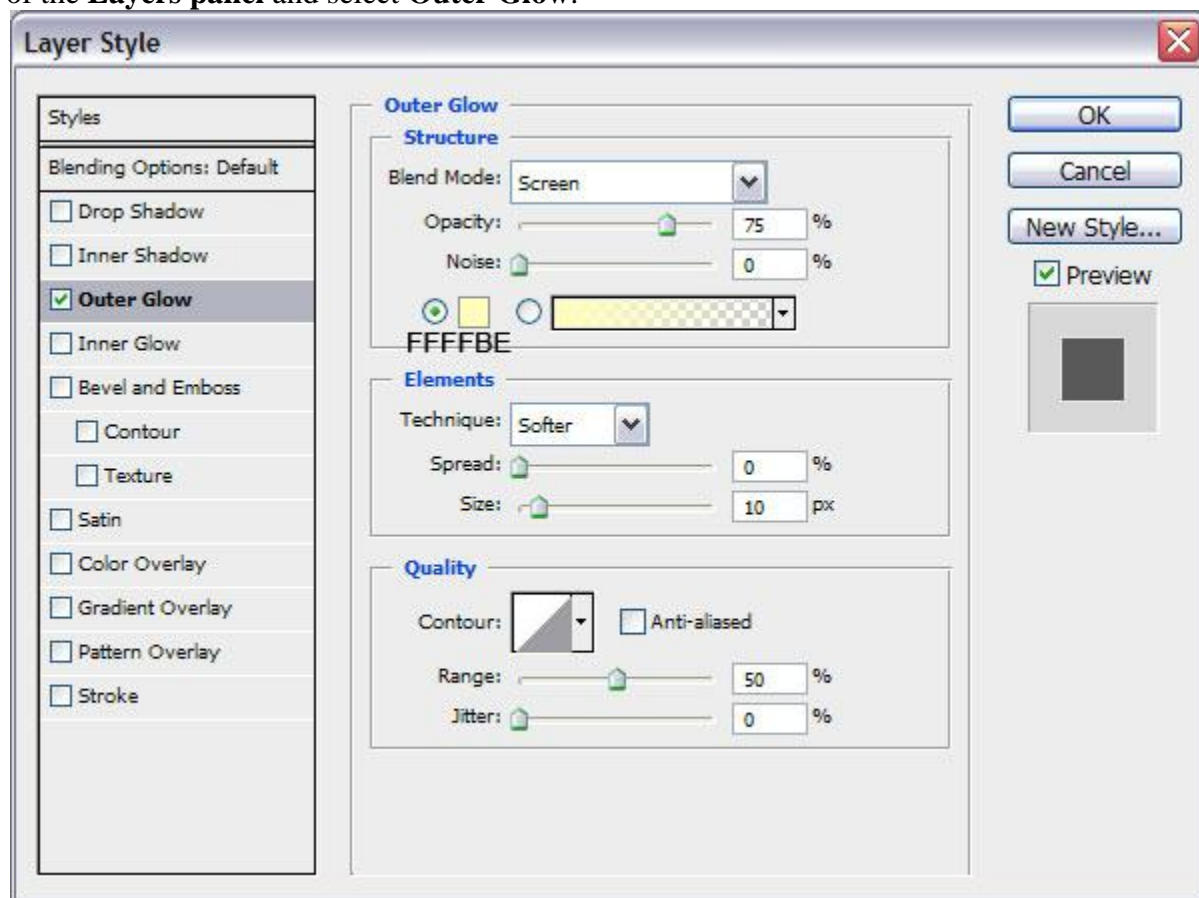
Select the **Custom Shape Tool (U)** in the **Tools bar**, in the **Options bar** click the **Shape** to open the selection menu. Find **5 Point Star** at the bottom of the menu, and then double-click a shape thumbnail to select it.



Fill the whole fir tree's inside space with selected shape, changing also their sizes using **Free Transform (Ctrl+T)** command.



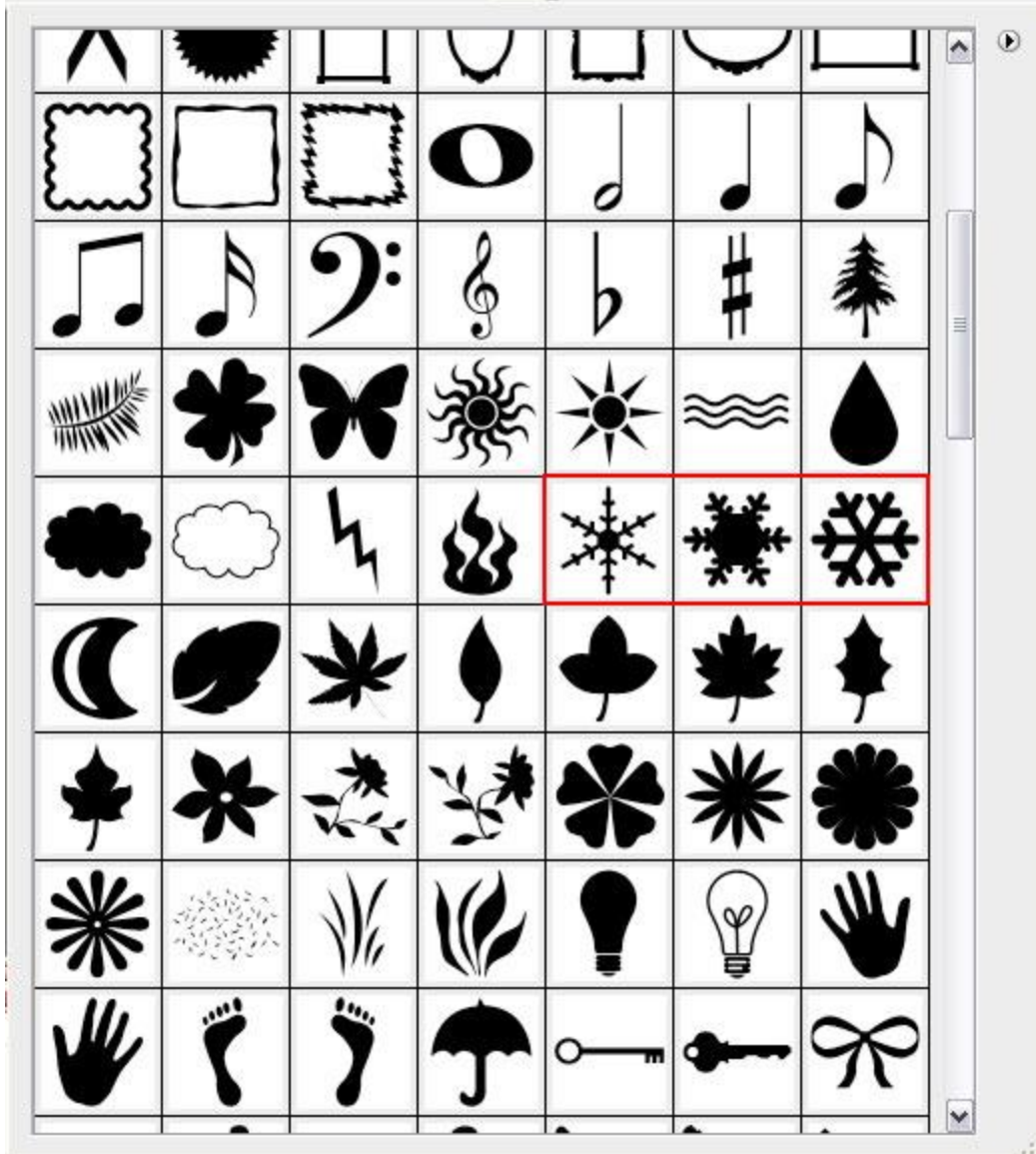
One star should be situated on the fir tree's top, click on **Add a layer style** icon from bottom part of the **Layers panel** and select **Outer Glow**.



This is the result you should get now:



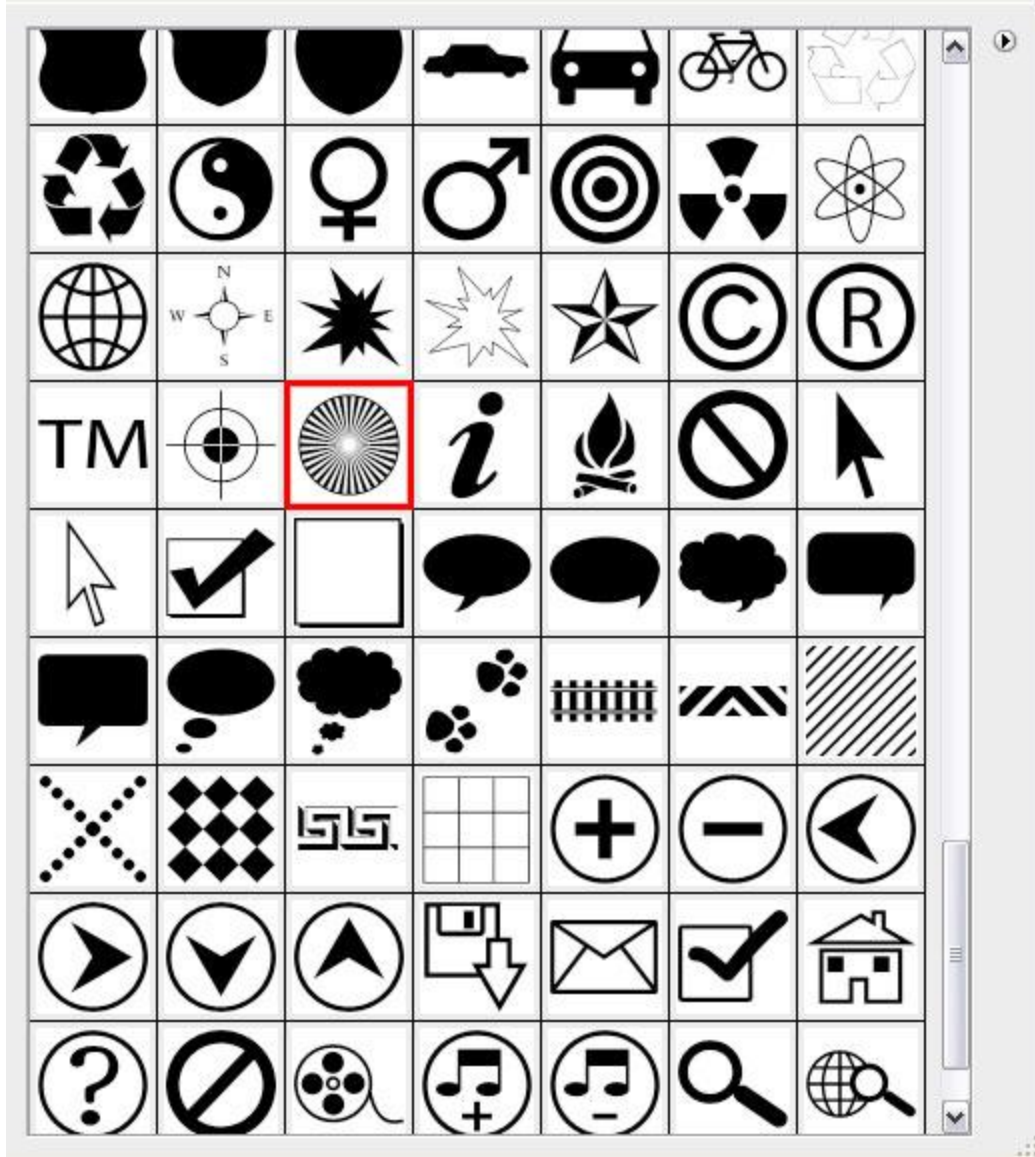
Next we'll select three types of snowflakes from **Custom Shape Tool (U)** like those from below:



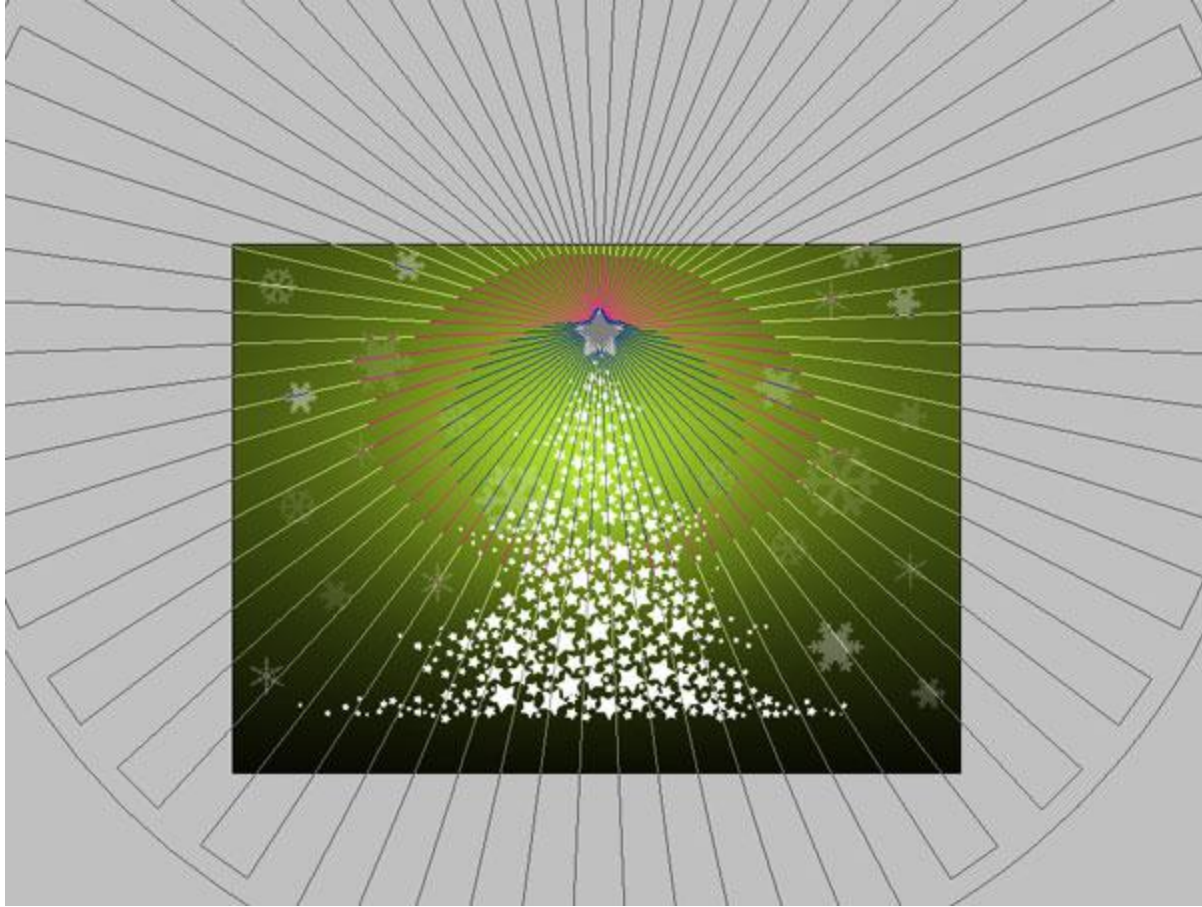
Draw and place the snowflakes in an arbitrary way on our canvas, we may change their **Opacity** value on the Layers panel: **Fill: 10%, 20%, 40%**.



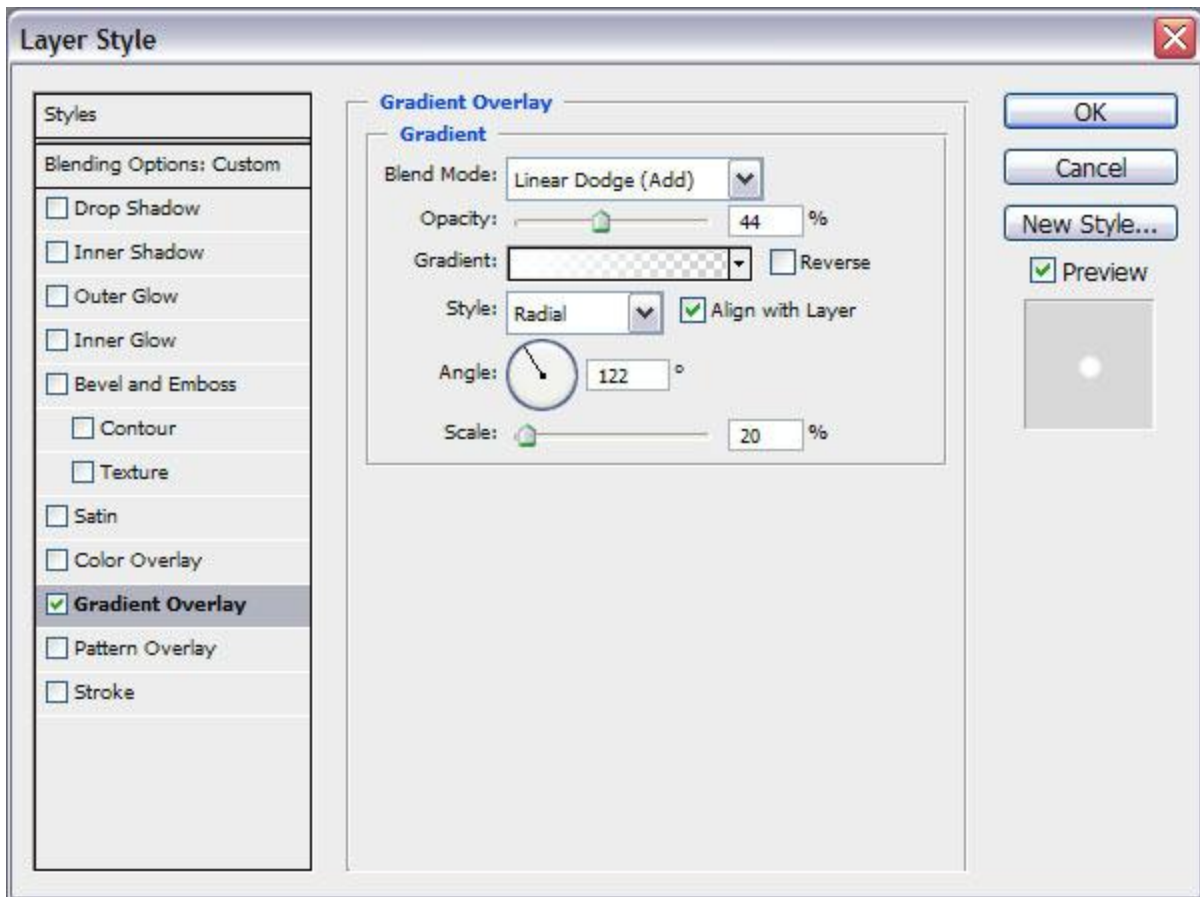
Choose again the **Custom Shape Tool (U)** in the **Tools bar**, in the **Options bar** click the **Shape** to open the selection menu. Find **Registration Target 2** at the bottom of the menu, and then double-click a shape thumbnail to select it.



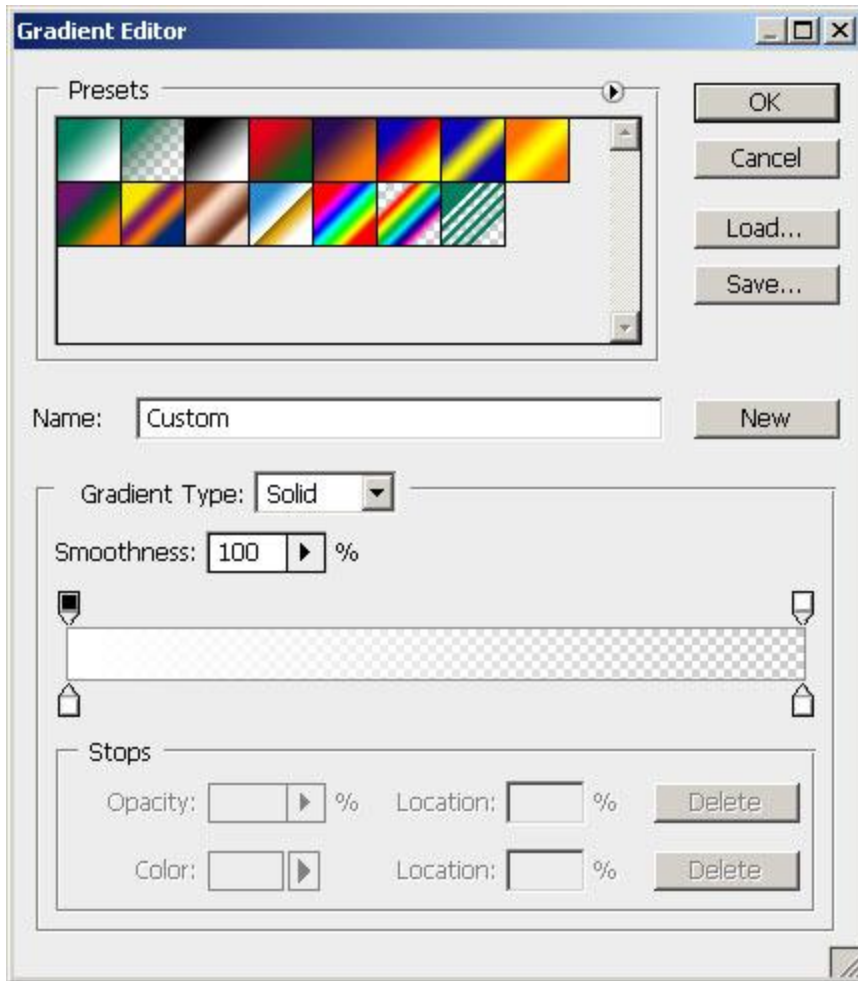
Draw and place this shape under the layer containing the top star, the same way situated below:
Fill – 0% on this layer:



Click on **Add a layer style** icon from bottom part of the **Layers panel** and select **Gradient Overlay**.



Click in the **color bar** to open the **Gradient Editor** and set the **color stops** as shown. Click **OK** to close the **Gradient Editor** dialog box.



We've got the next result:



Choose the **Pen Tool (P)**, set the **drawing mode** on **Shape Layers** in **Options bar** and draw the next shape as shown on the fir tree, choosing the next colors:



We've got the next result:



The final result!