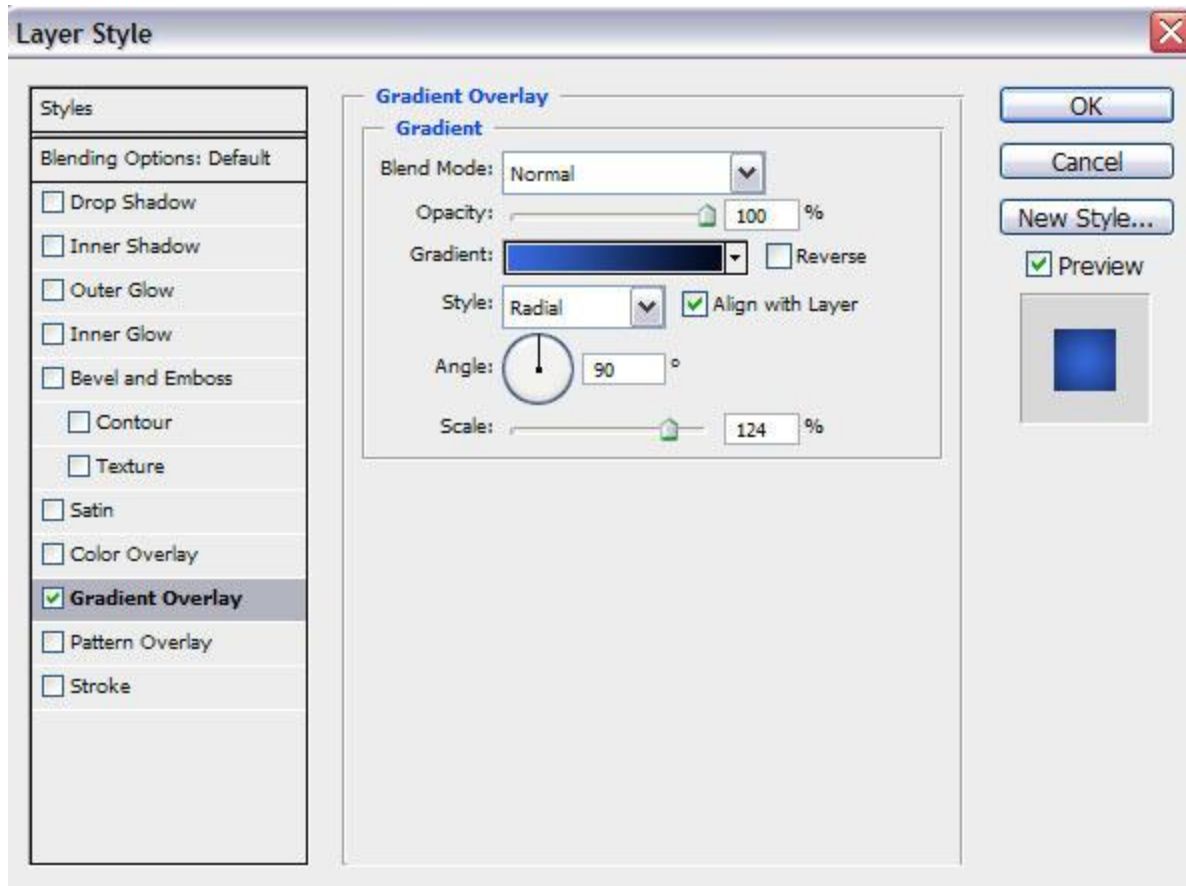


## Three Ornaments

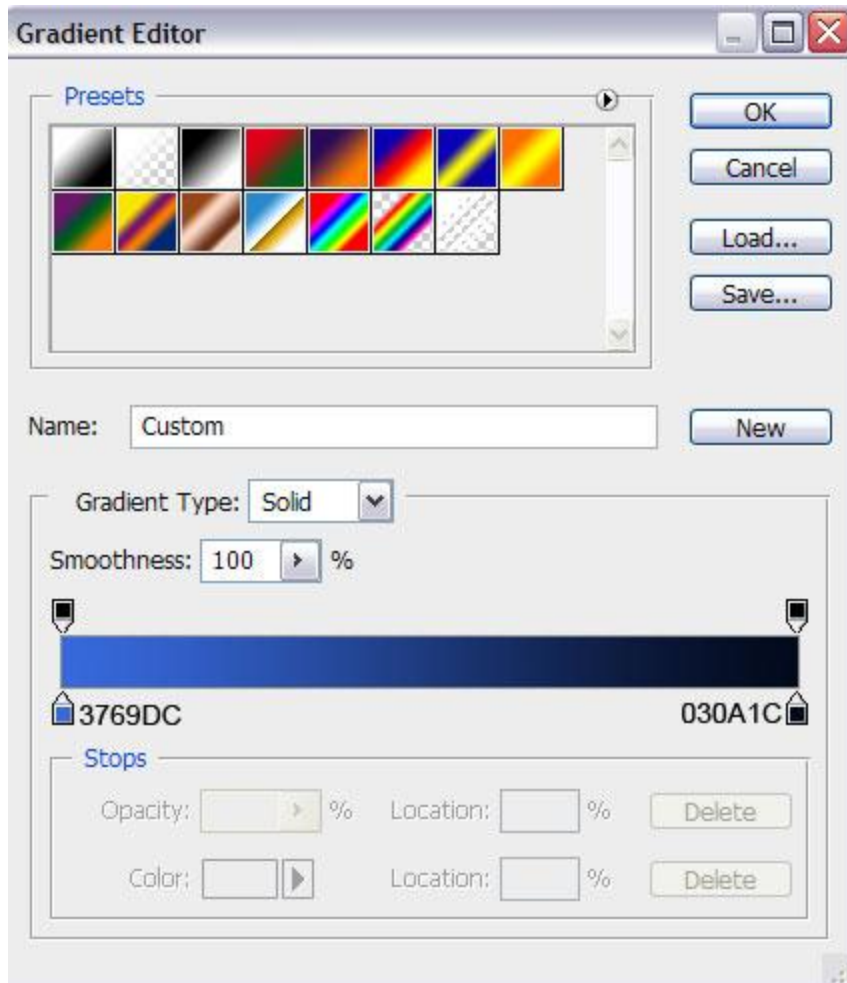
Start working by creating a new document (**Ctrl+N**) in **Adobe Photoshop** with the size **1280px** by **1024px** (**RGB** color mode) at a resolution of **72 pixels/inch**. Take now the **Rectangle Tool** (**U**) and draw a rectangle on the whole canvas.



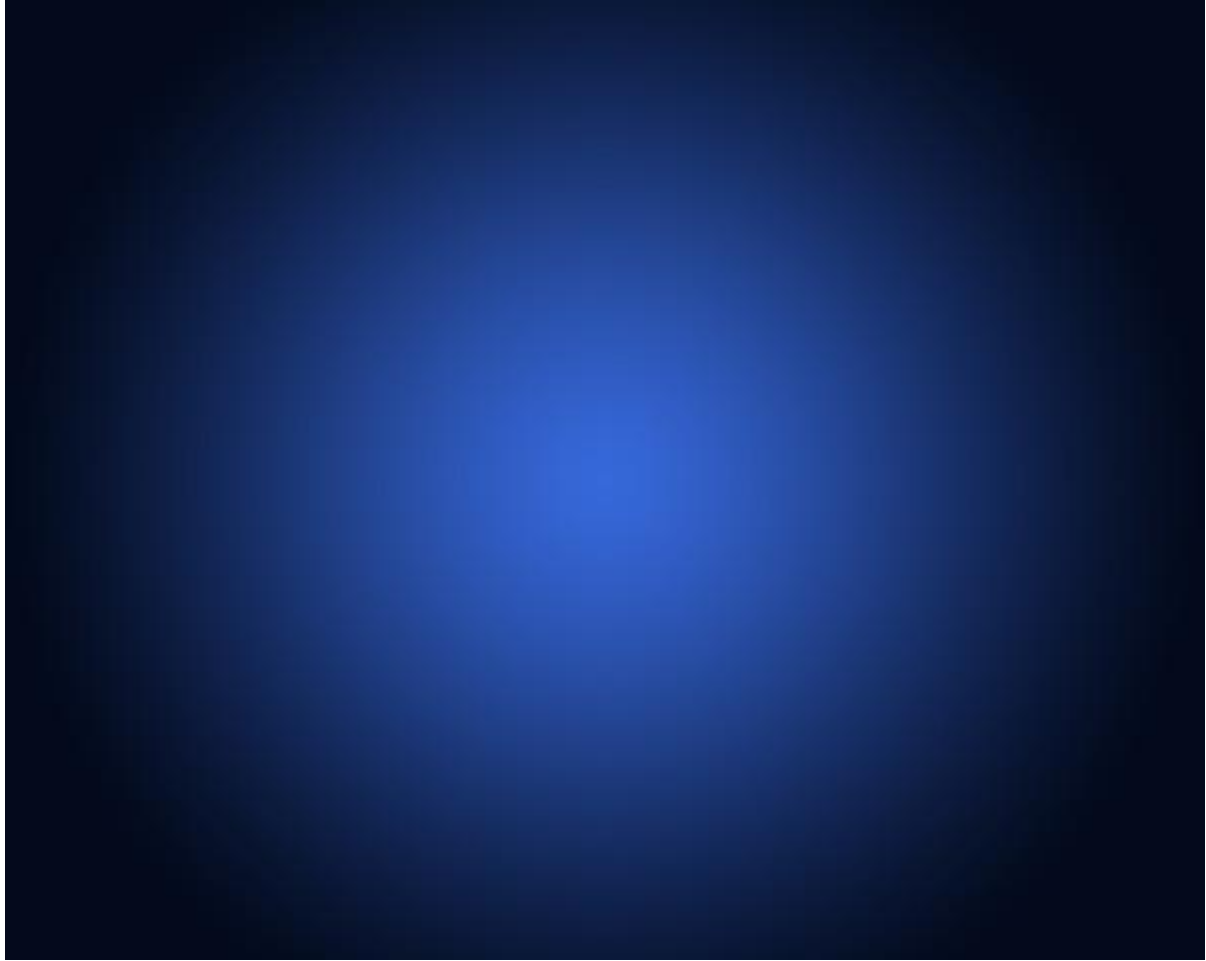
Click on **Add a layer style** icon from bottom part of the **Layers panel** and select **Gradient Overlay**.



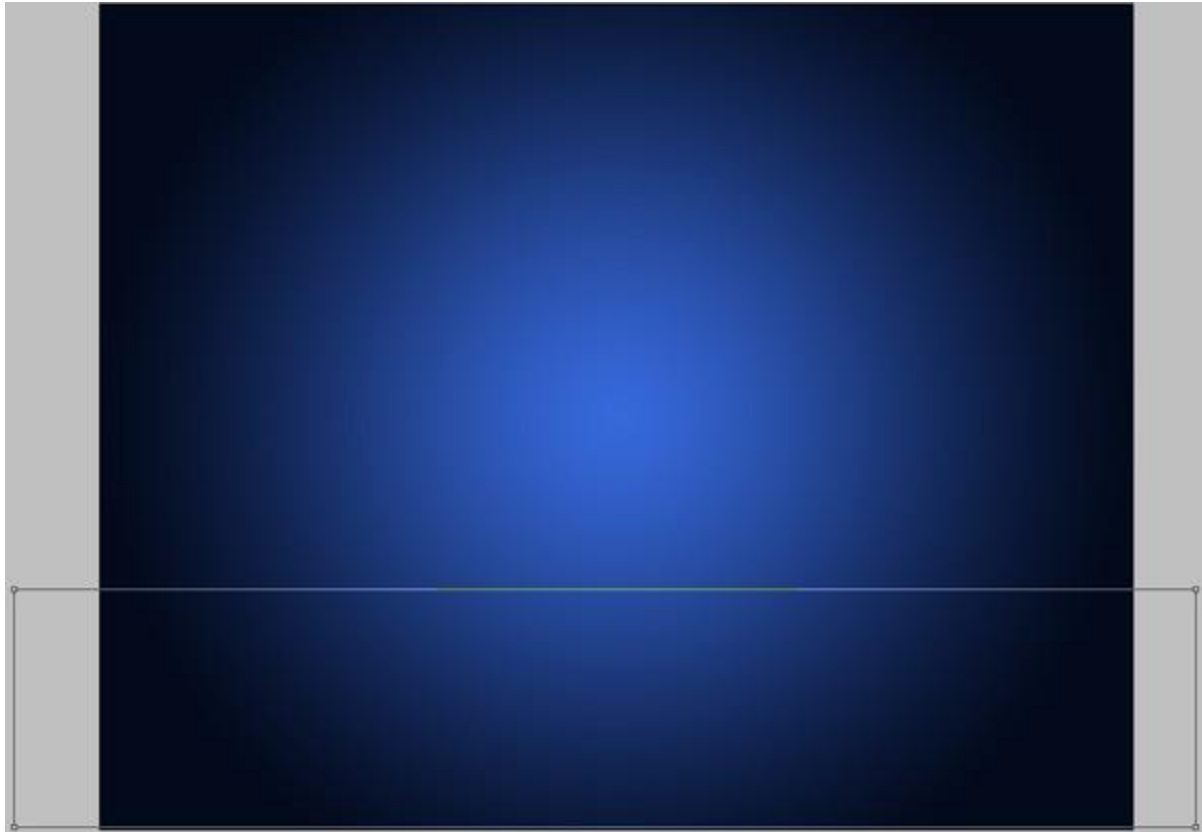
Click in the **color bar** to open the **Gradient Editor** and set the **color stops** as shown. Click **OK** to close the **Gradient Editor** dialog box.



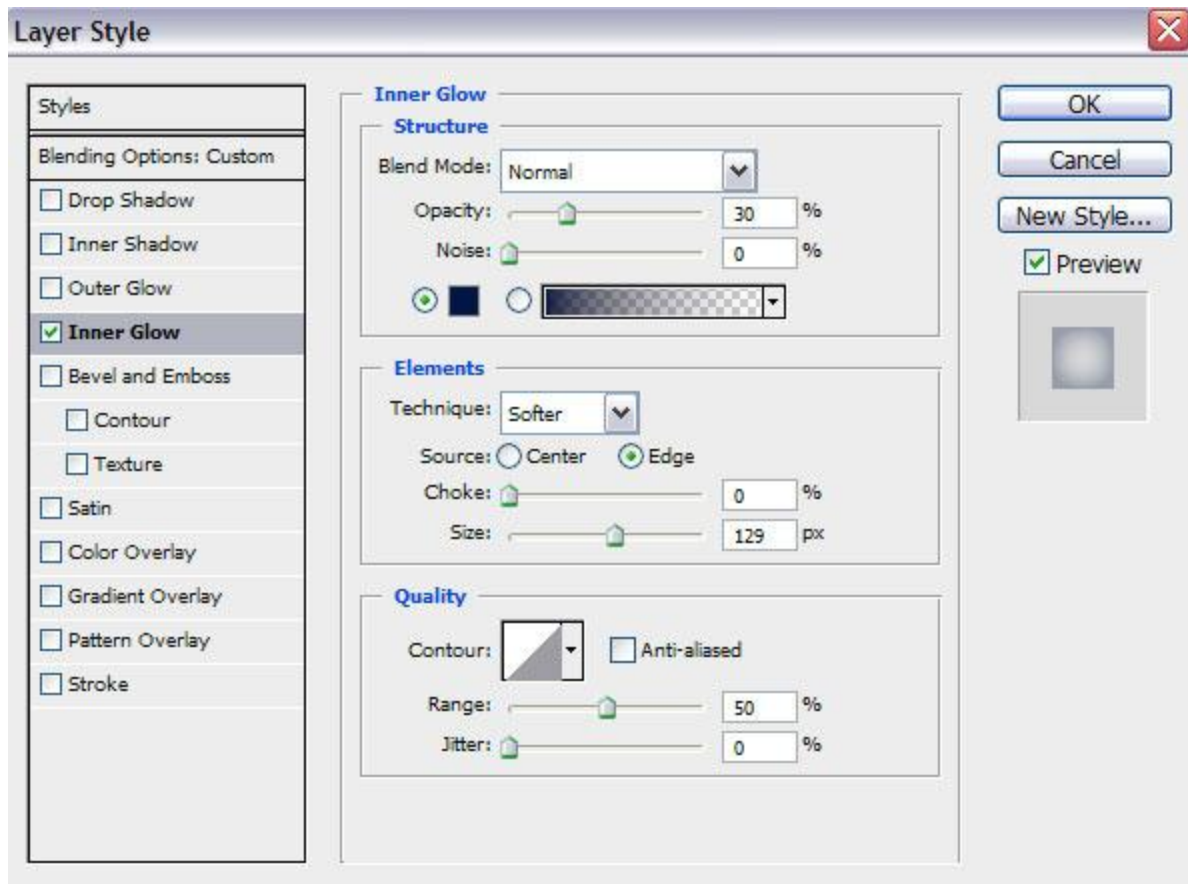
We've got the next background:



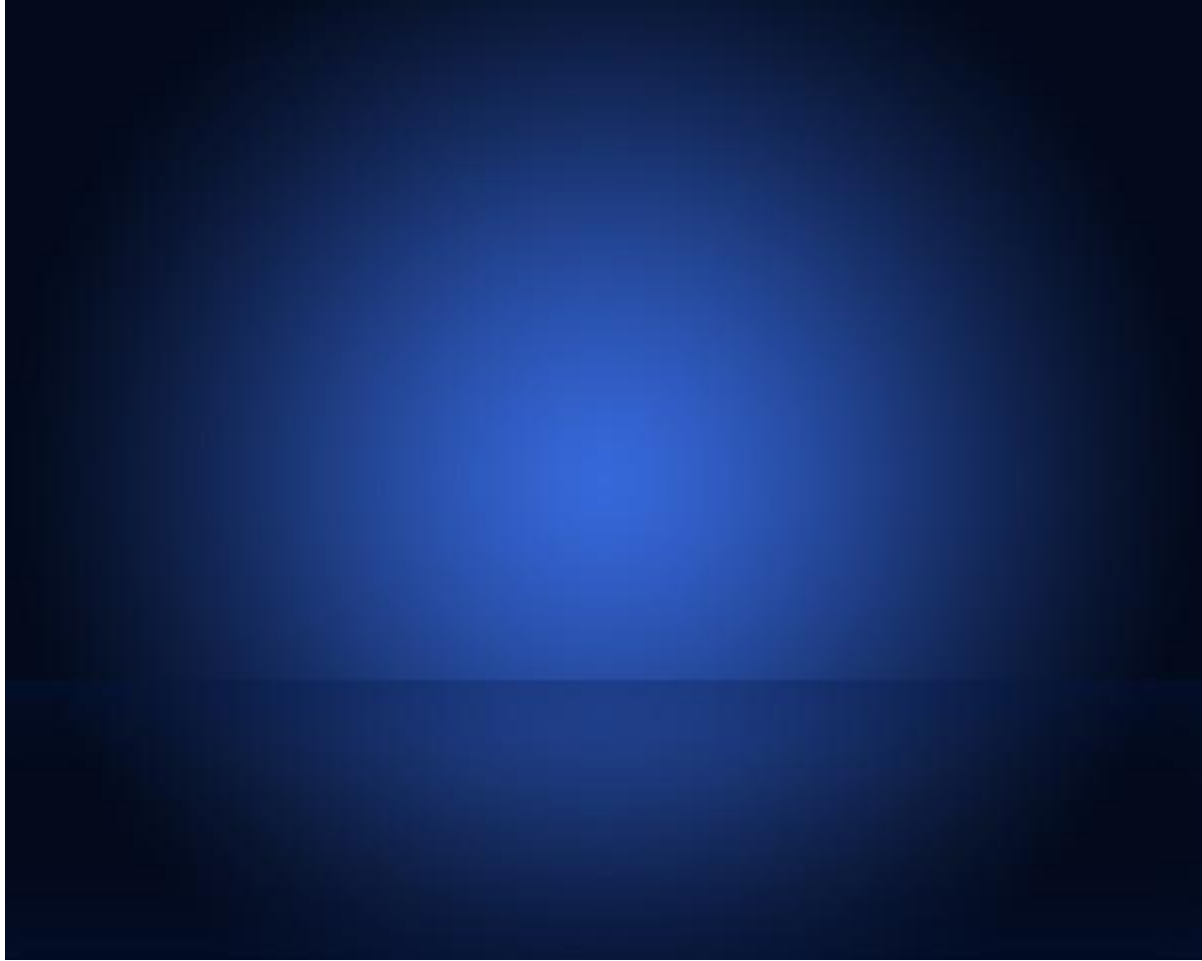
Next represent a kind of plane on the bottom part of the background, applying the same tool.



Set **Fill** to **0%** for this layer and click on **Add a layer style** icon from bottom part of the **Layers panel**, select **Inner Glow**.



We've got the next result:

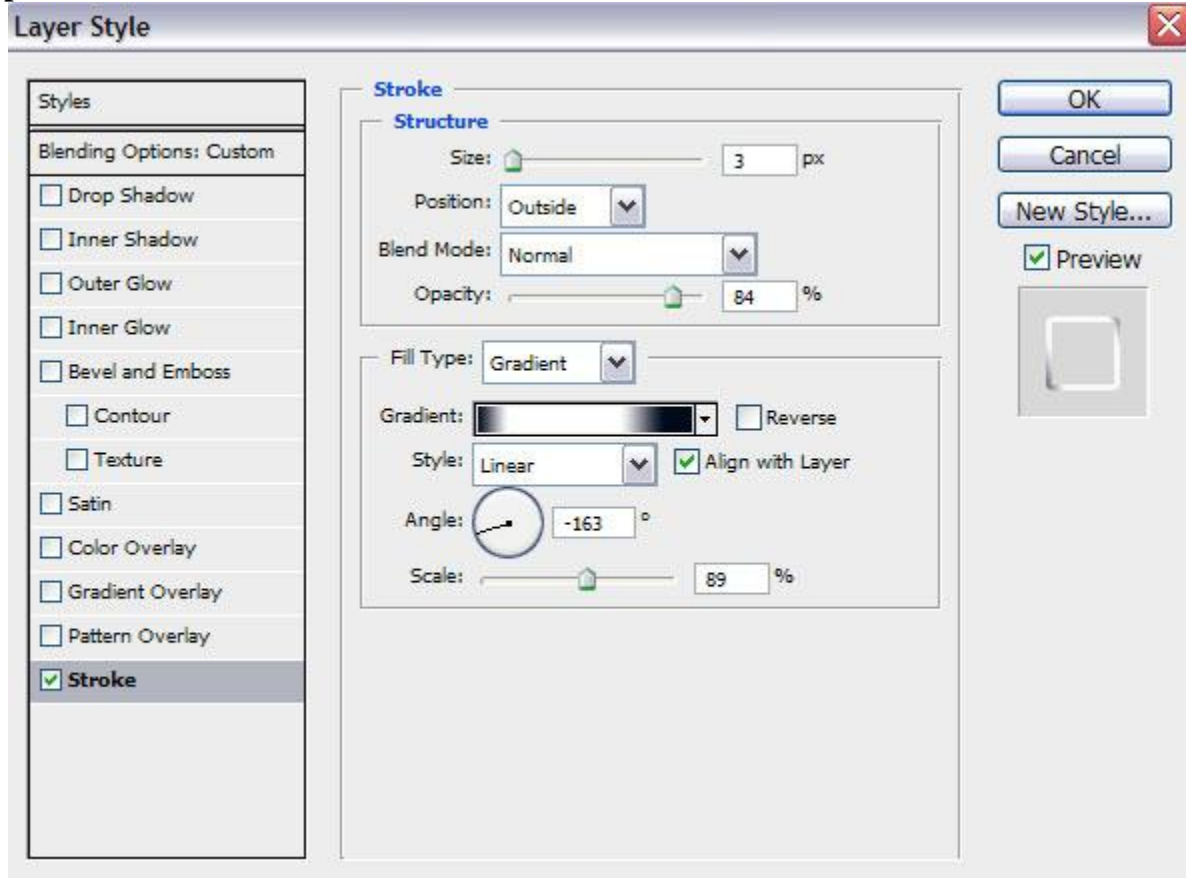


Choose the **Pen Tool (P)**, set the **drawing mode** on **Shape Layers** in **Options bar** and draw the next shape as shown.

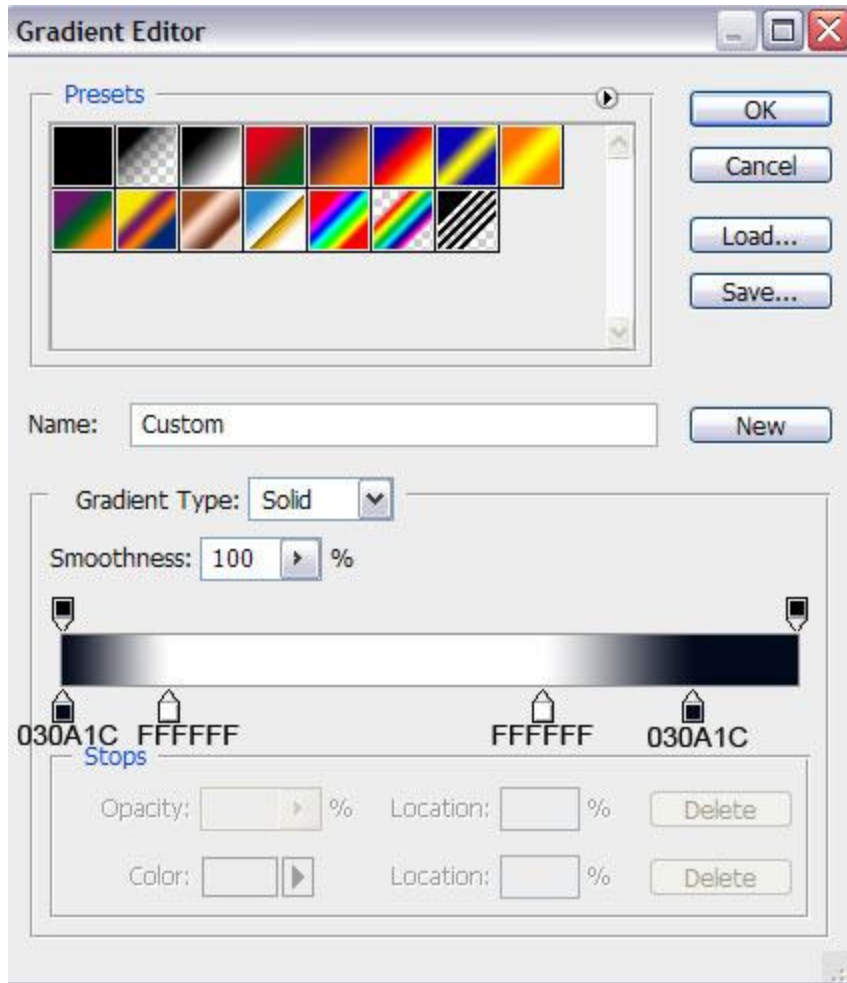




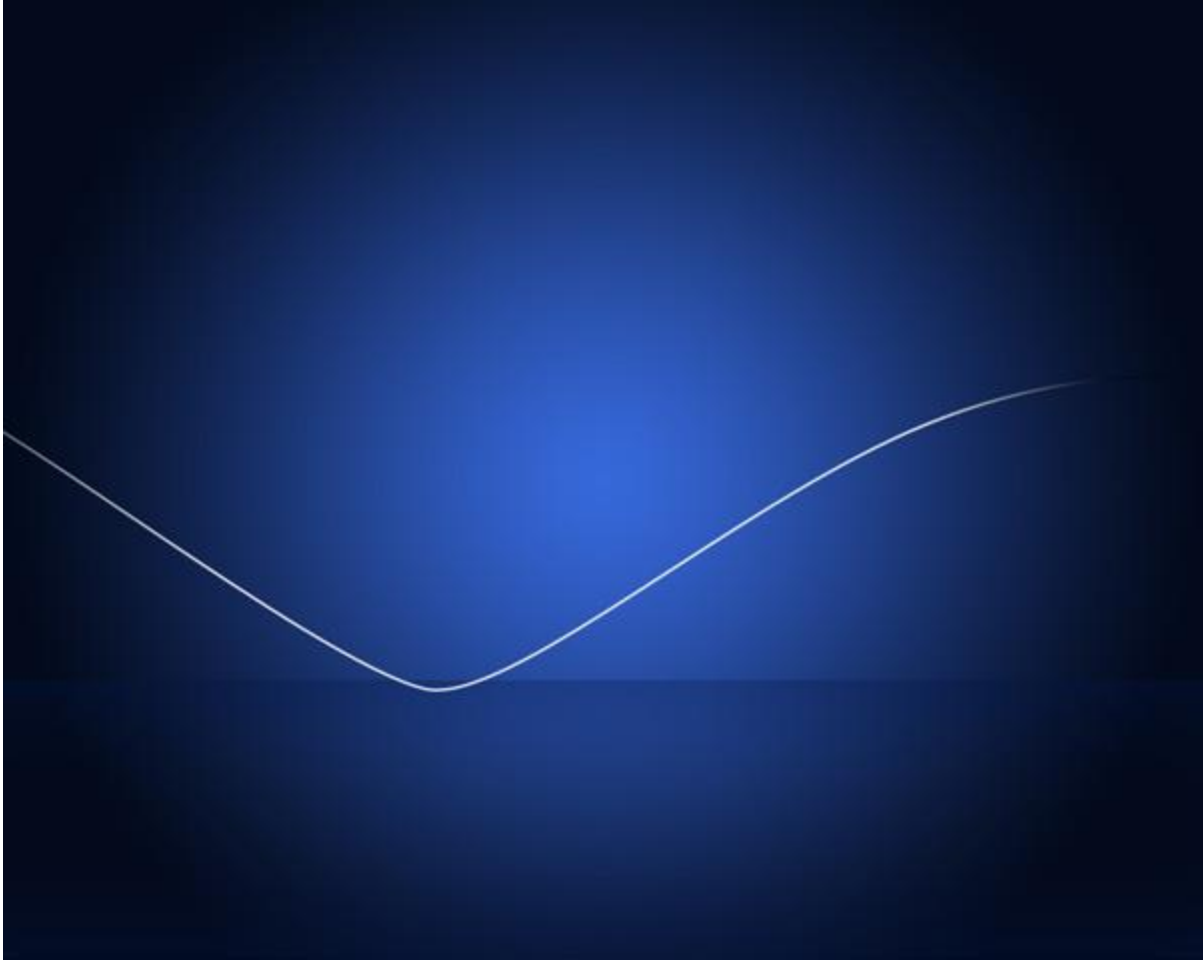
Set **Fill** to **0%** for this layer and click on **Add a layer style** icon from bottom part of the **Layers** panel, select **Stroke**.



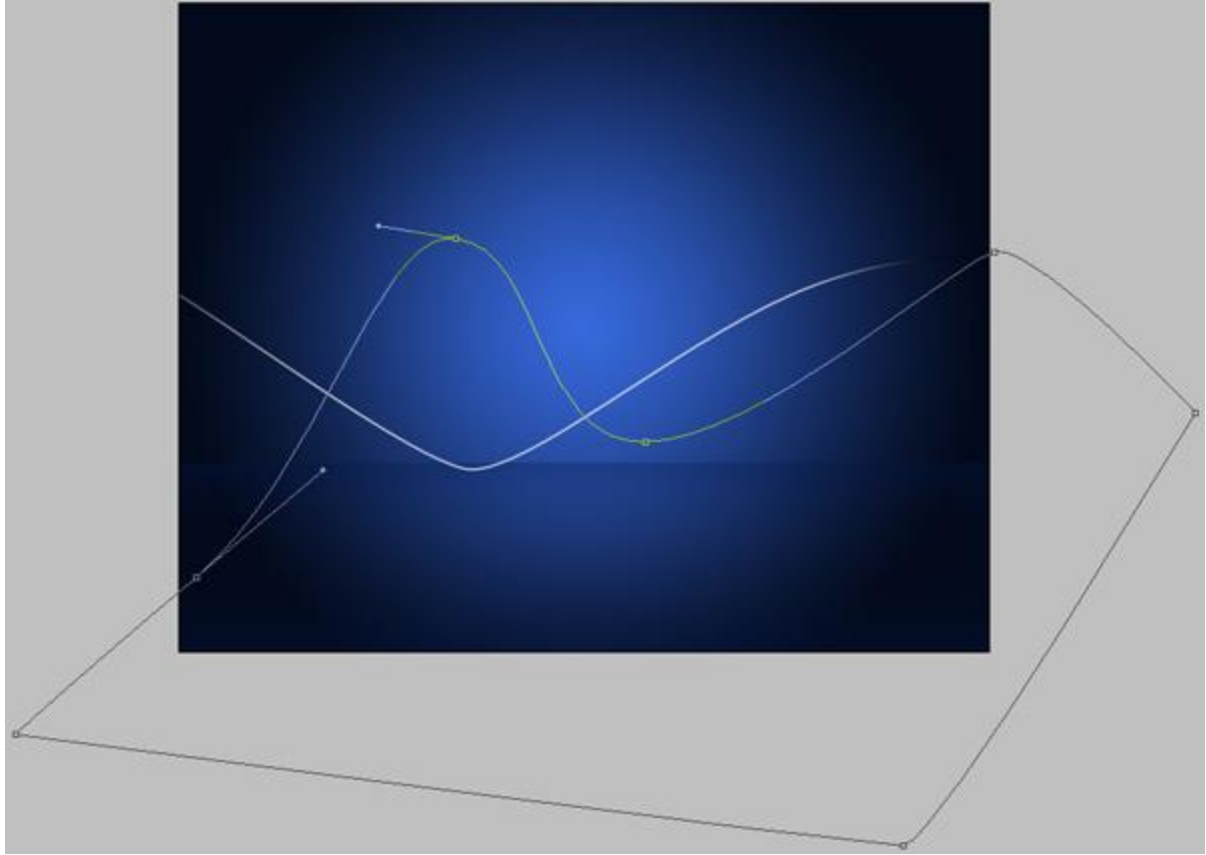
Select **Fill Type – Gradient**, click in the **color bar** to open the **Gradient Editor** and set the **color stops** as shown. Click **OK** to close the **Gradient Editor** dialog box.



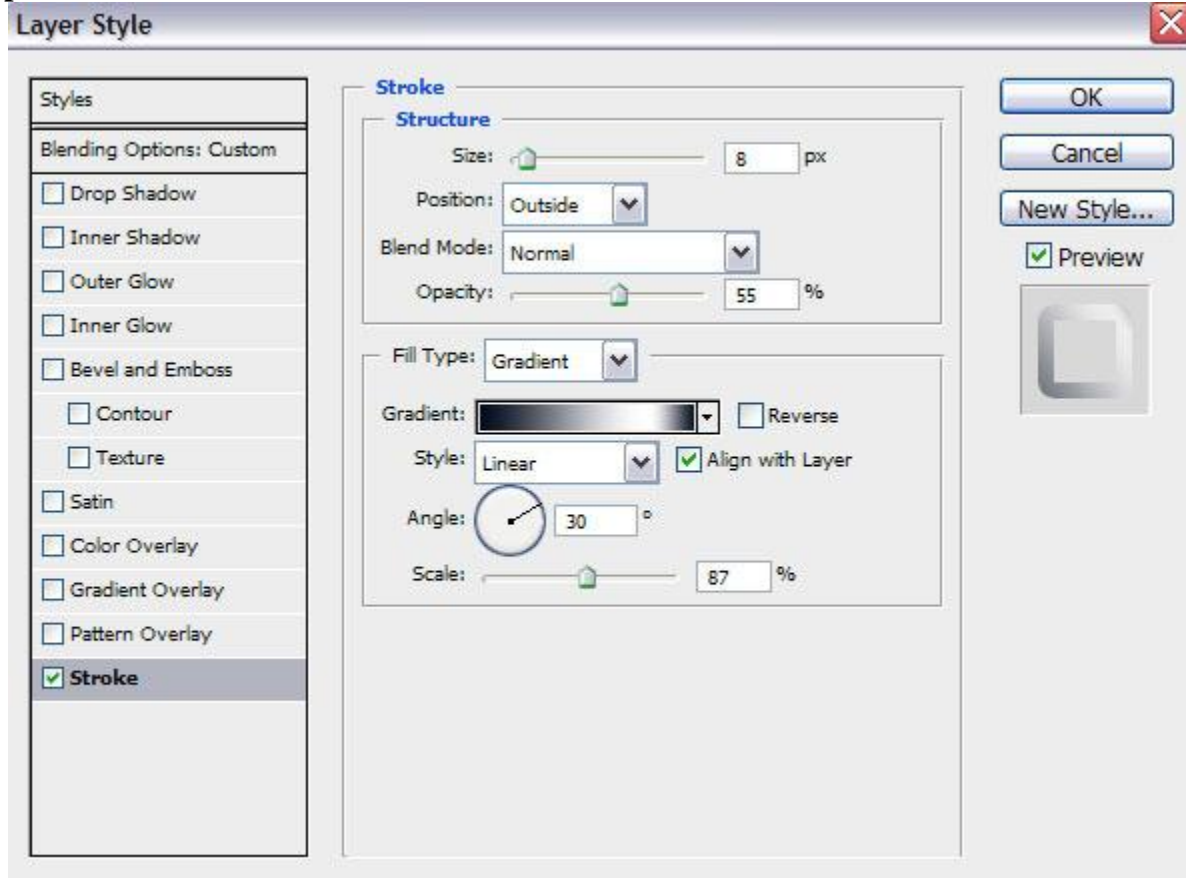
We've got the next ribbon:



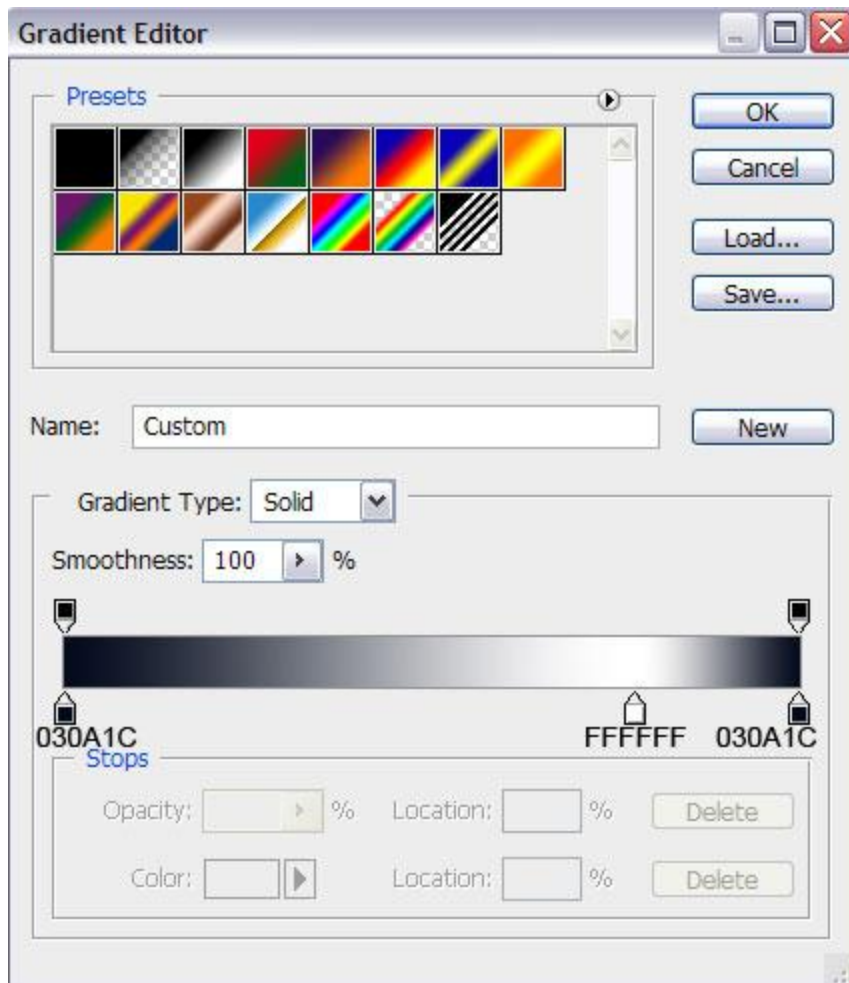
Create one more shape, applying the previous tools (**Pen Tool (P)**).



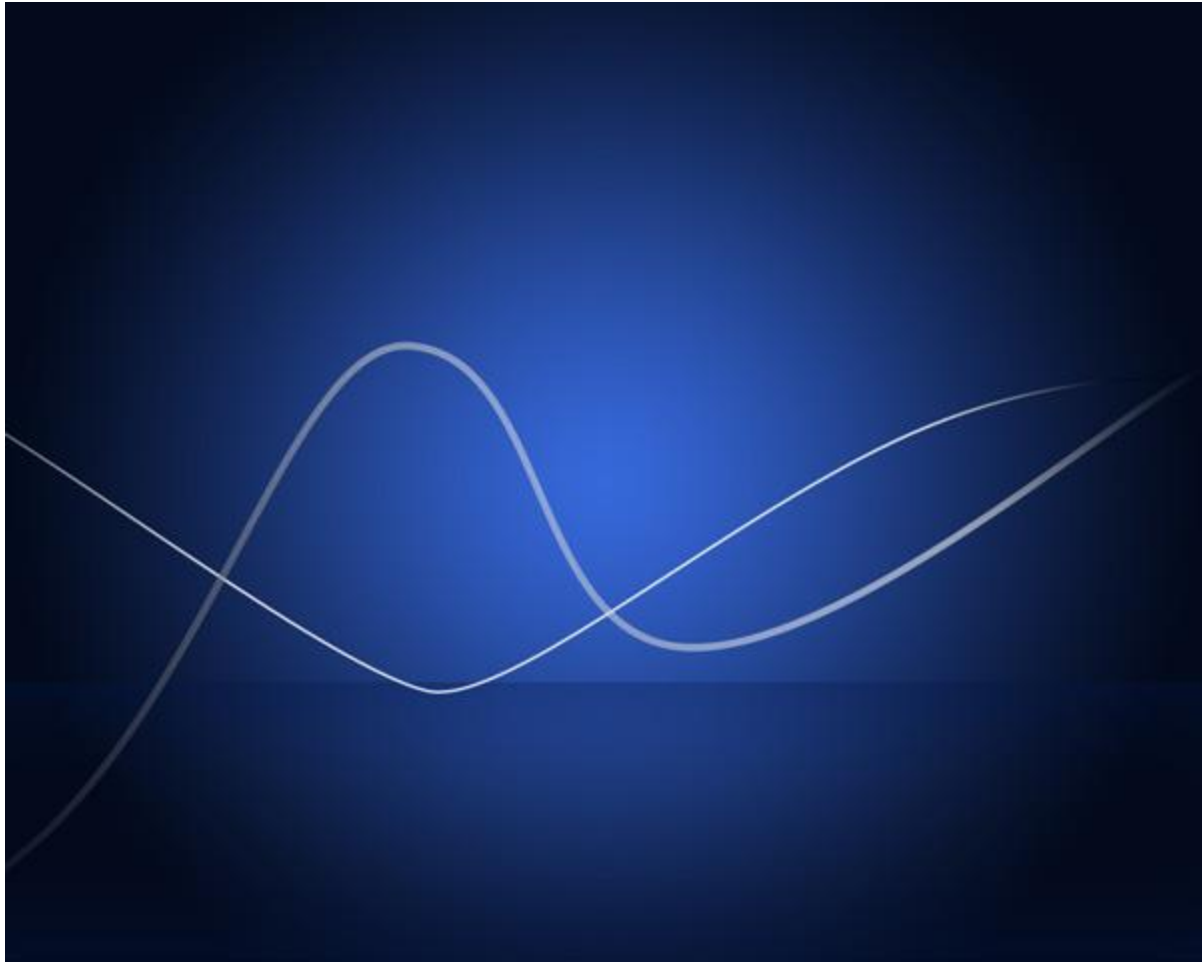
Set **Fill** to **0%** for this layer and click on **Add a layer style** icon from bottom part of the **Layers** panel, select **Stroke**.



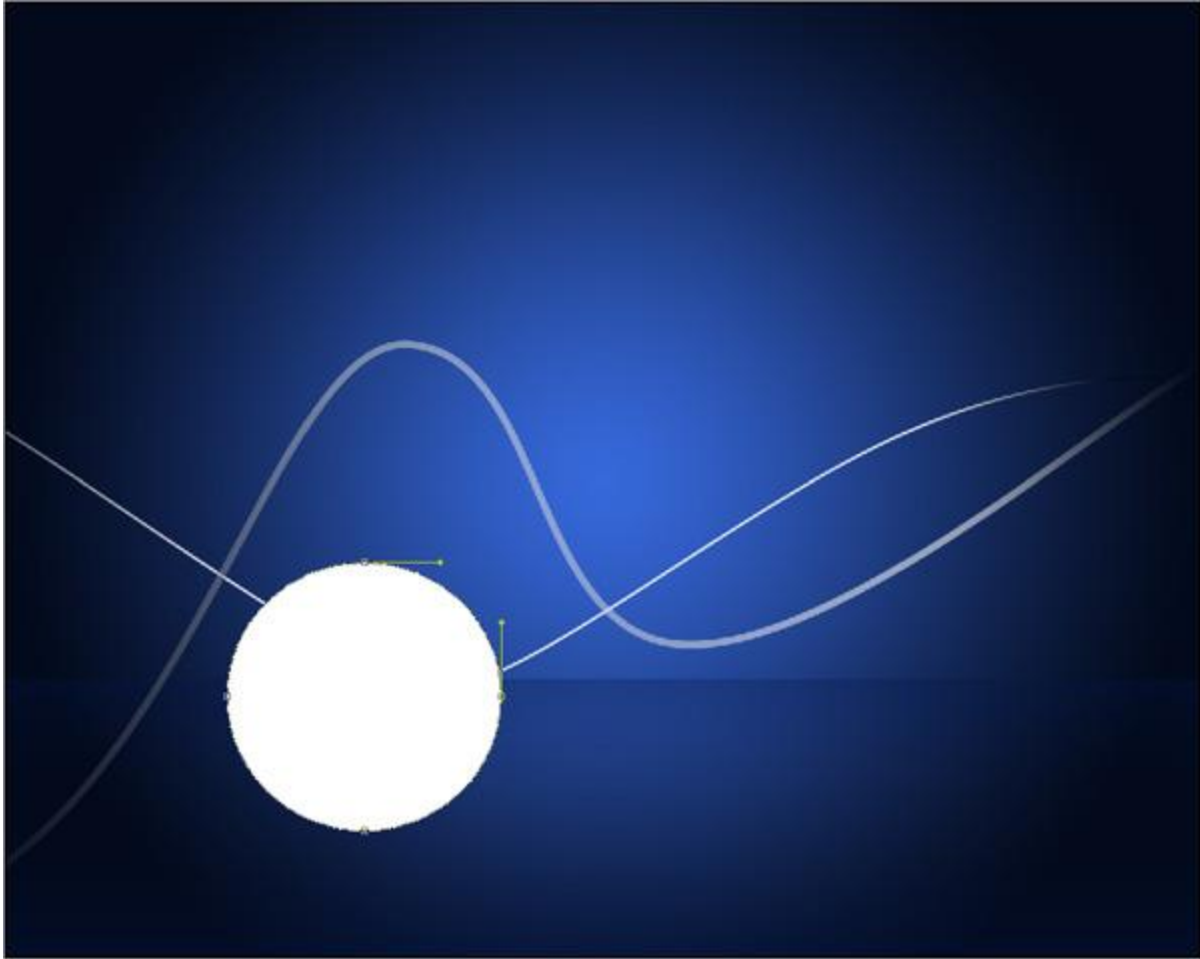
Select **Fill Type – Gradient**, click in the **color bar** to open the **Gradient Editor** and set the **color stops** as shown. Click **OK** to close the **Gradient Editor** dialog box.



We've got the next result:

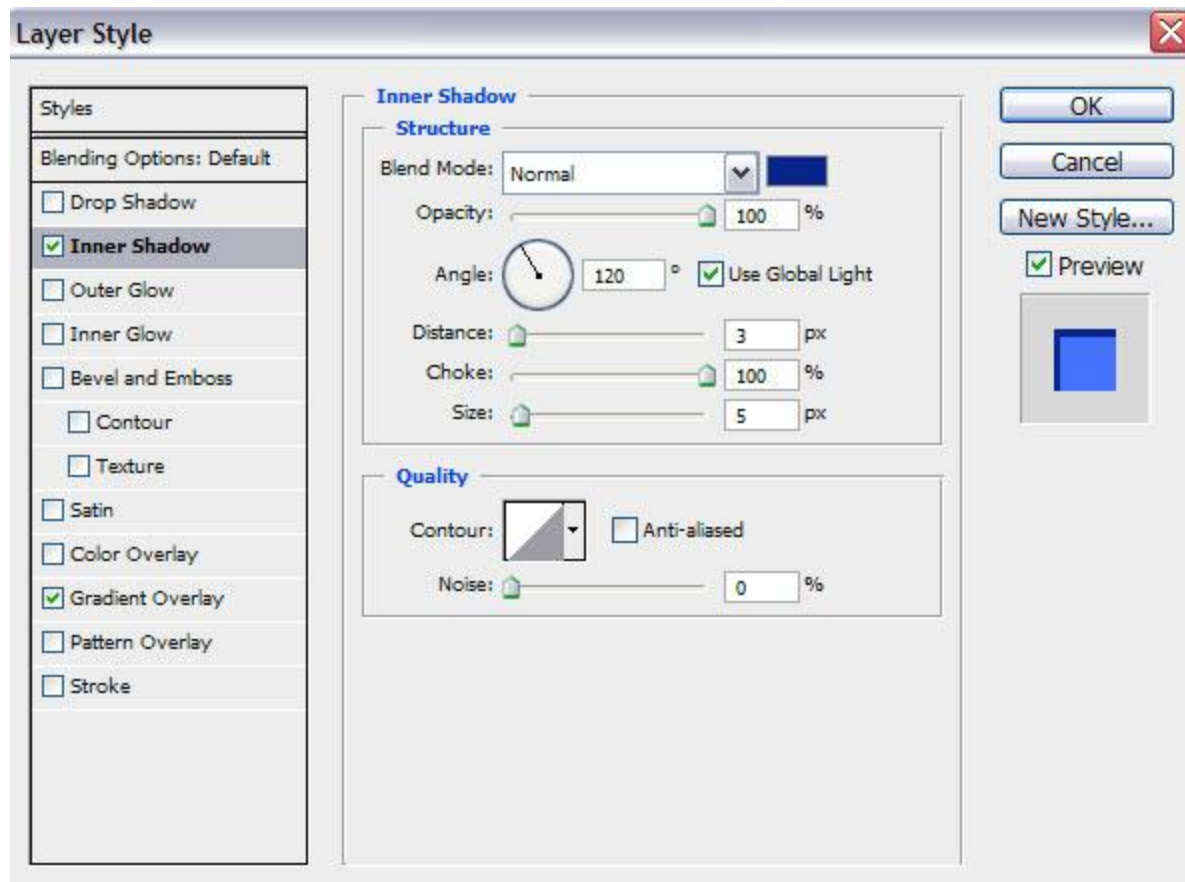


Use the **Ellipse Tool (U)** to draw the next ellipse as shown.

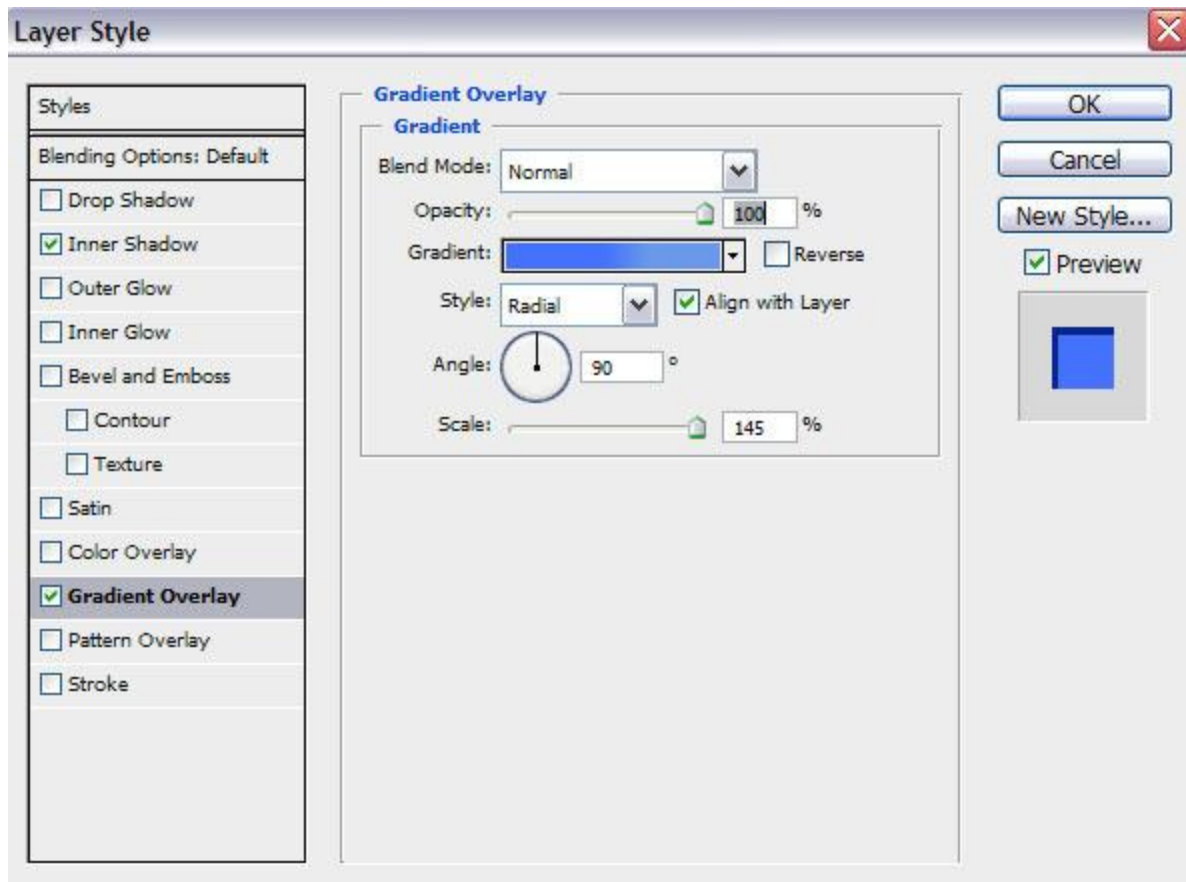


Click on **Add a layer style** icon from bottom part of the **Layers panel** and select **Inner Shadow**.

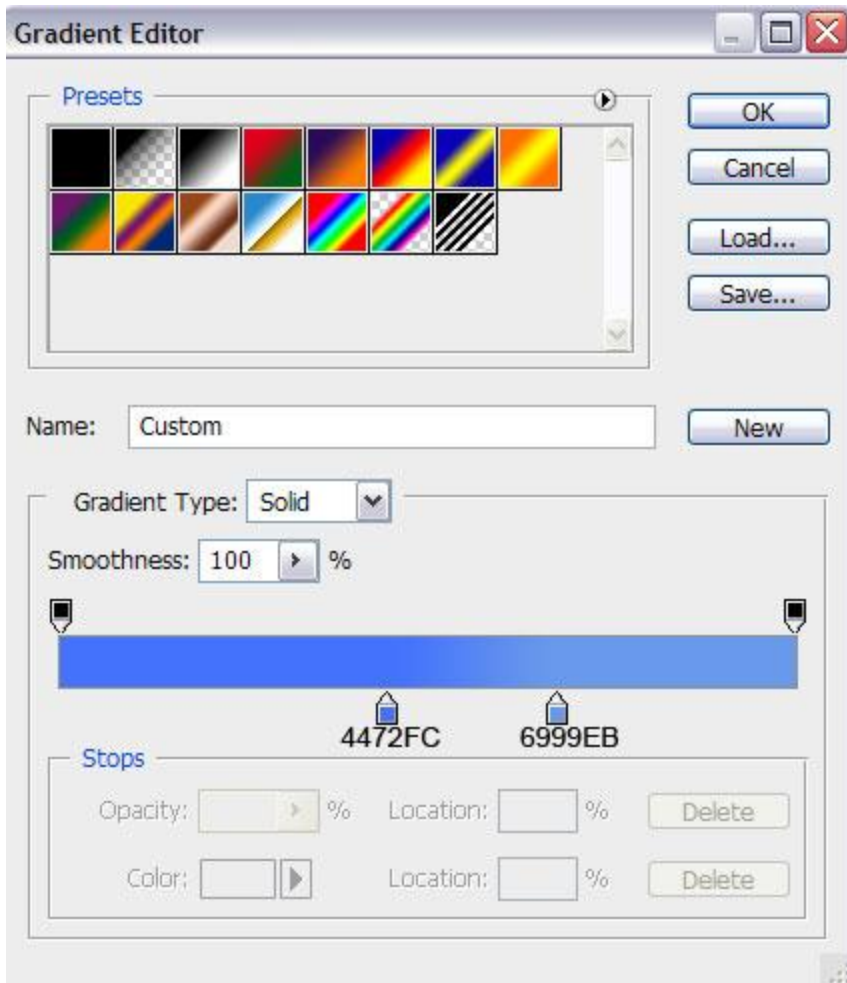




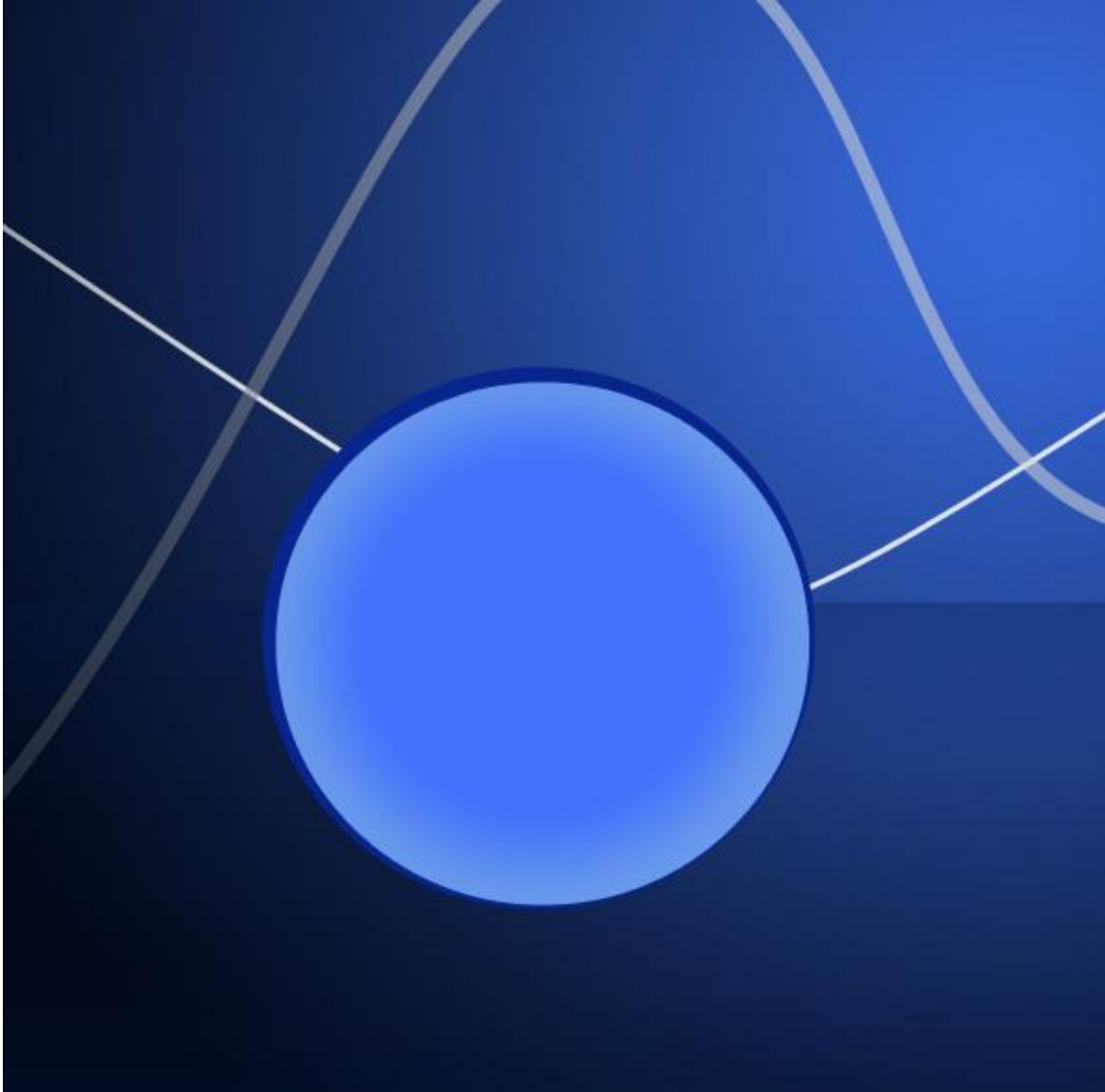
Apply **Gradient Overlay**



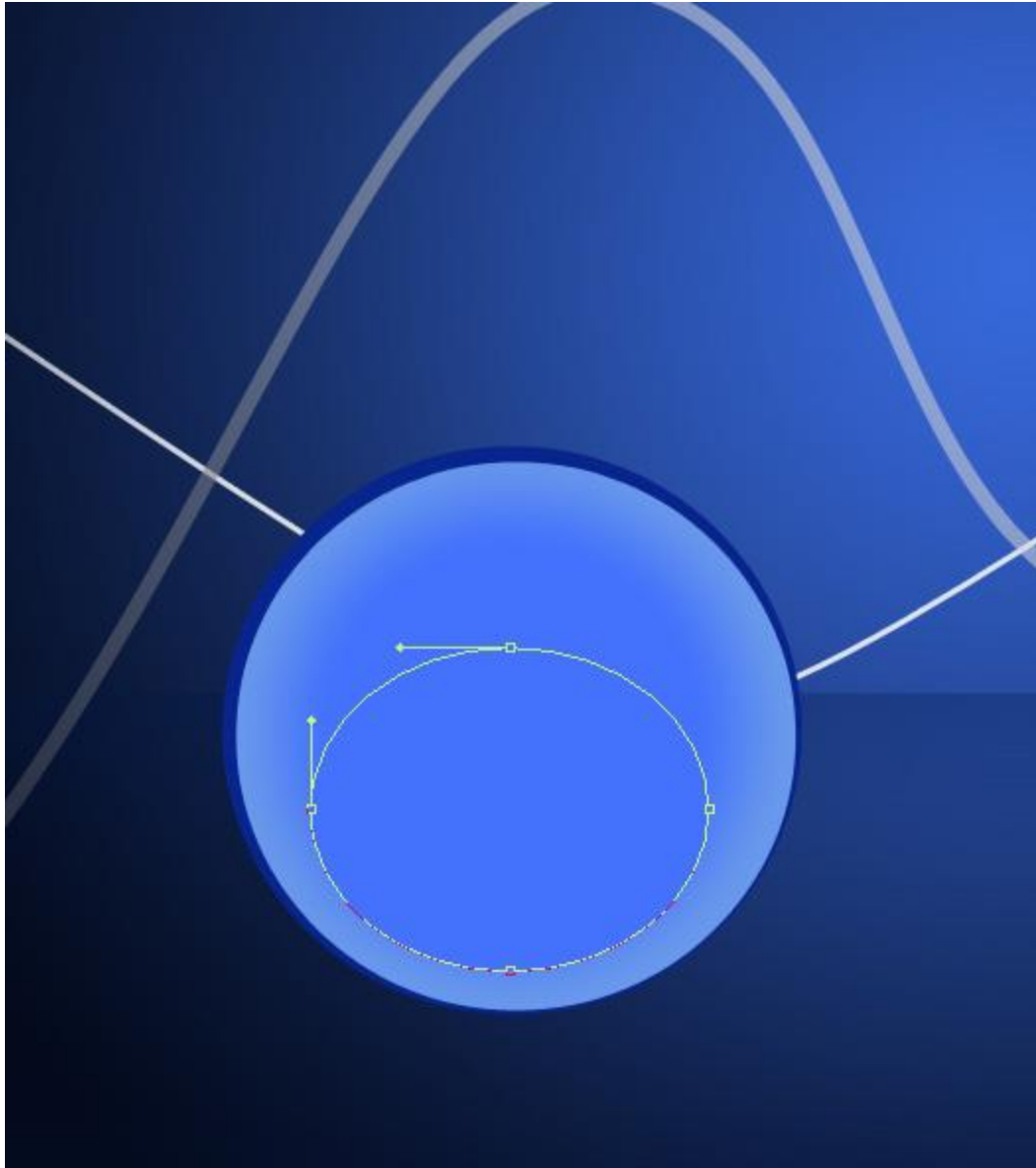
Click in the **color bar** to open the **Gradient Editor** and set the **color stops** as shown. Click **OK** to close the **Gradient Editor** dialog box.



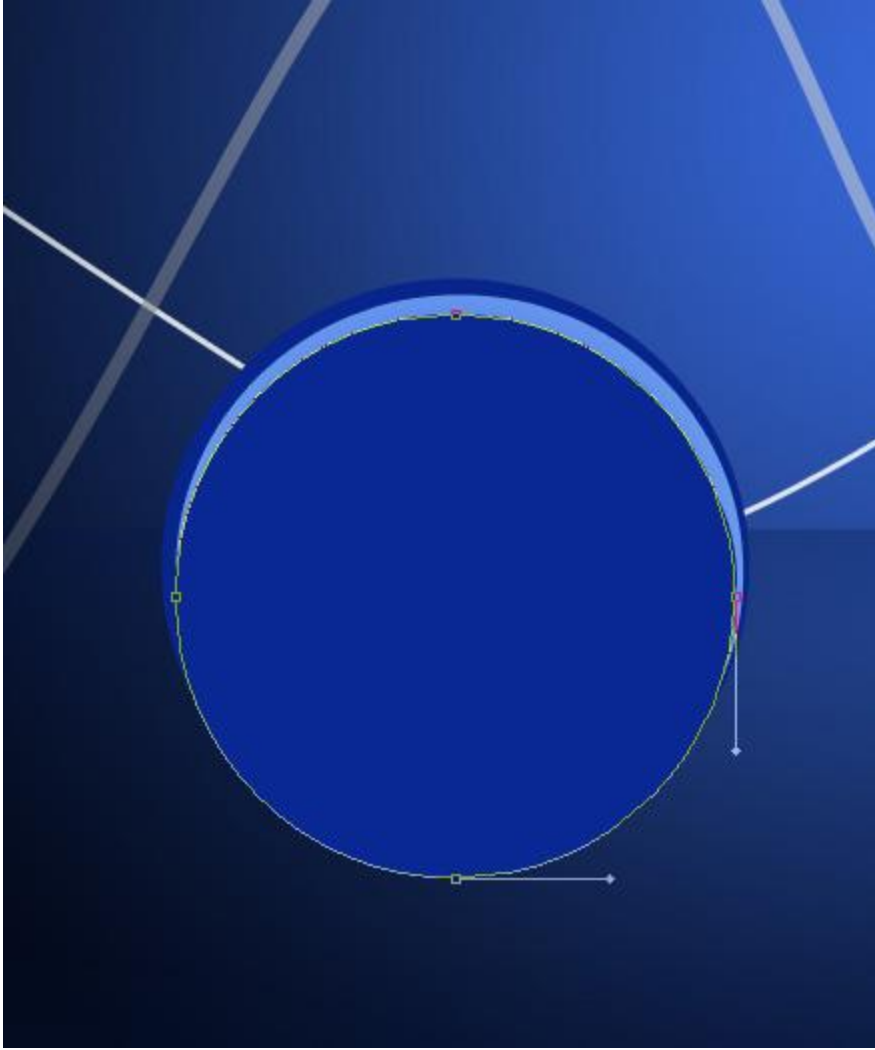
We've got the next result:



Using the same instrument, represent the next ellipse with #4472FC color.

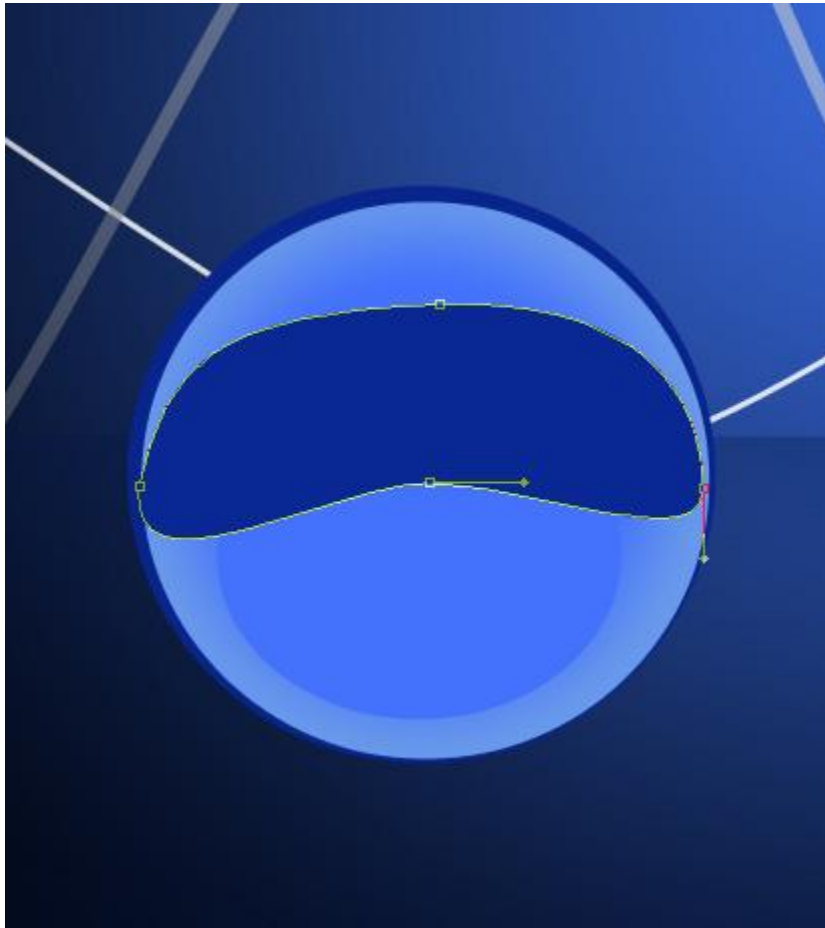


Represent the next layer of the tree toy. For the beginning select the **Ellipse Tool (U)** and draw the next ellipse.

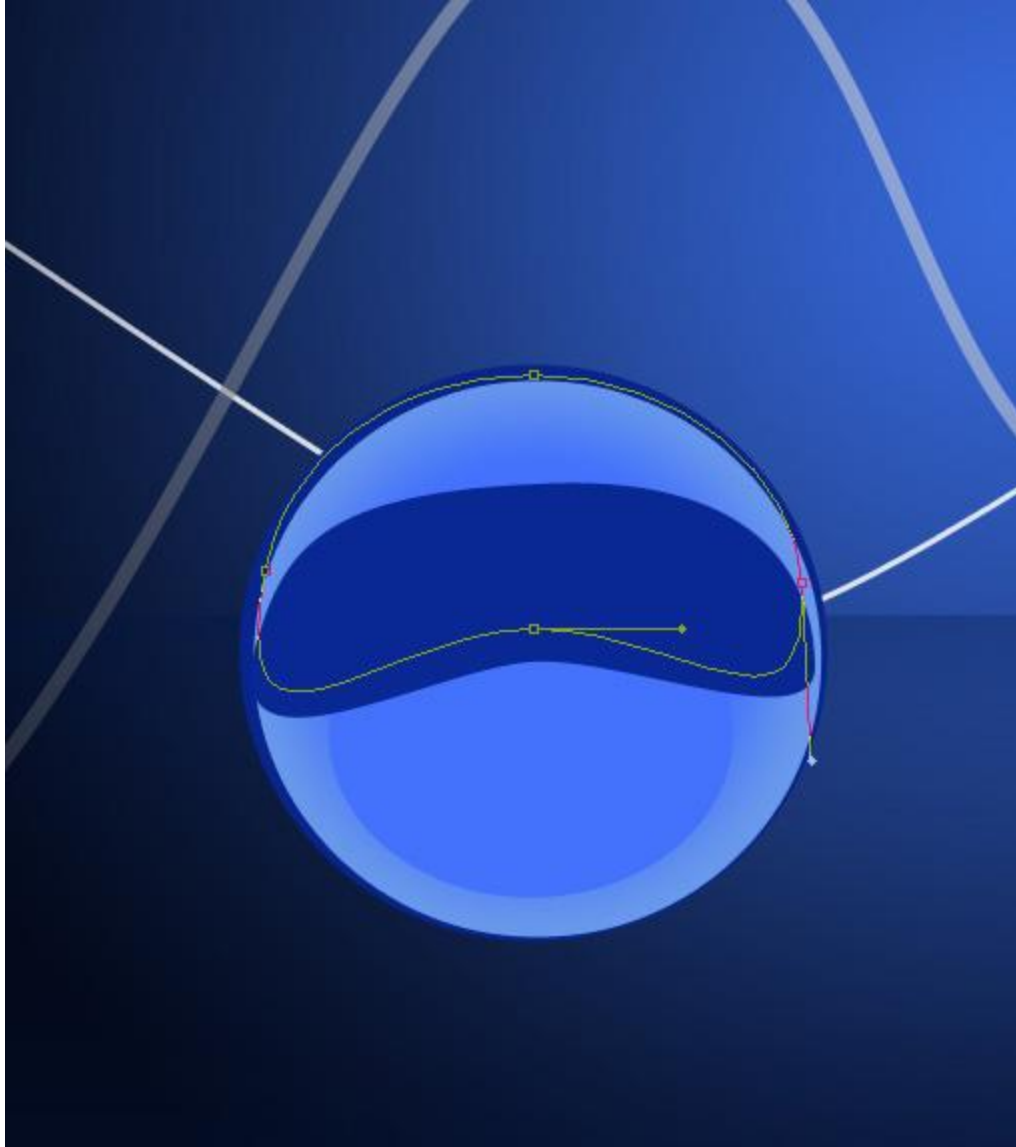


Use then the **Convert Point Tool** to change the shape as shown. The layer has the color

#092894.

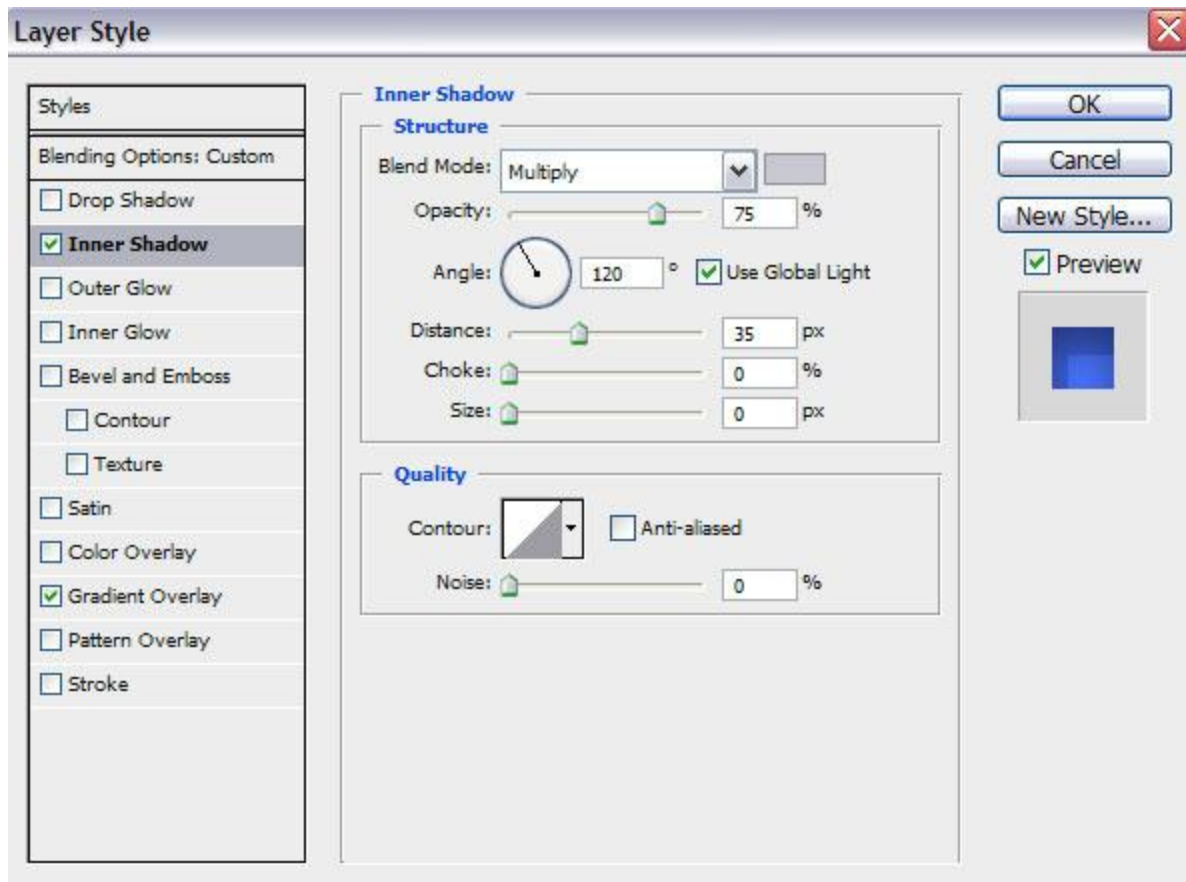


Applying the described above method, try to represent another shape on the toy.

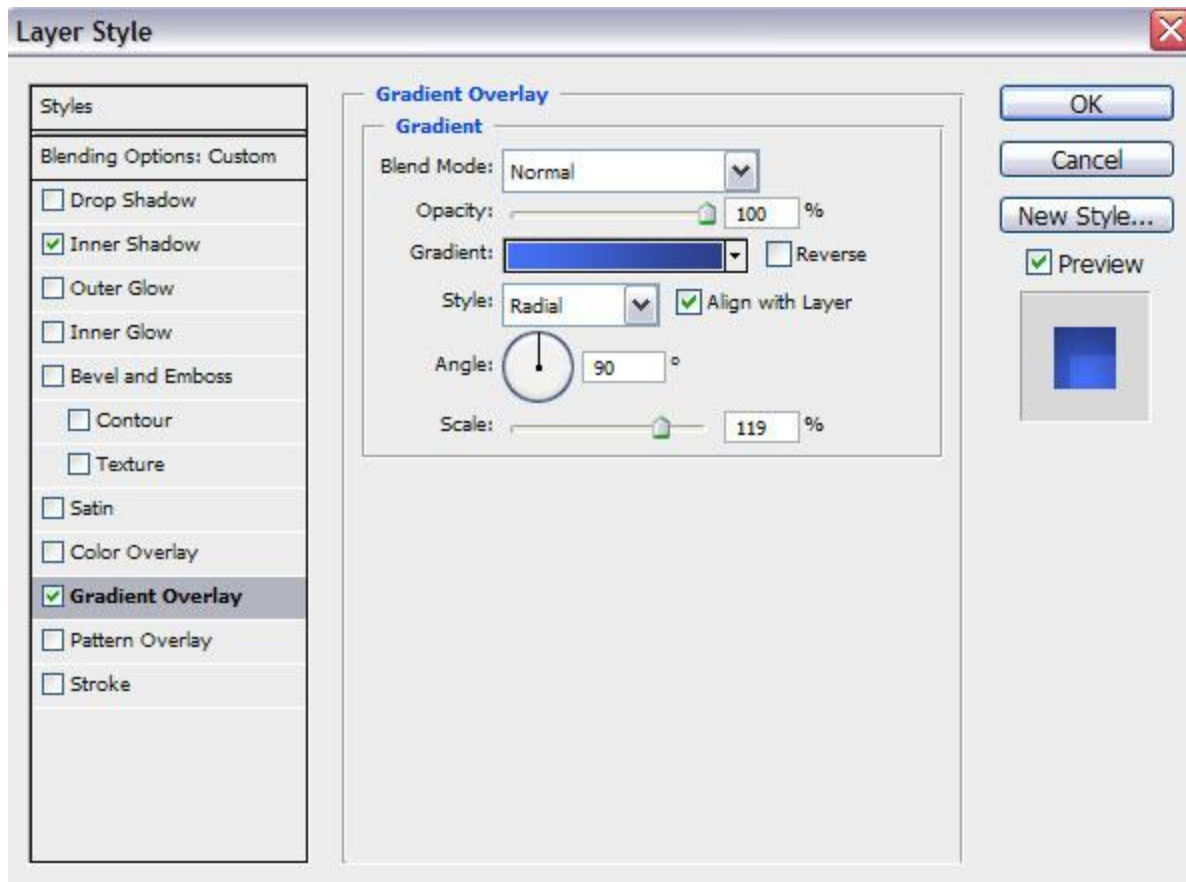


Set **Fill** to **0%** for this layer and click on **Add a layer style** icon from bottom part of the **Layers panel**, select **Inner Shadow**.

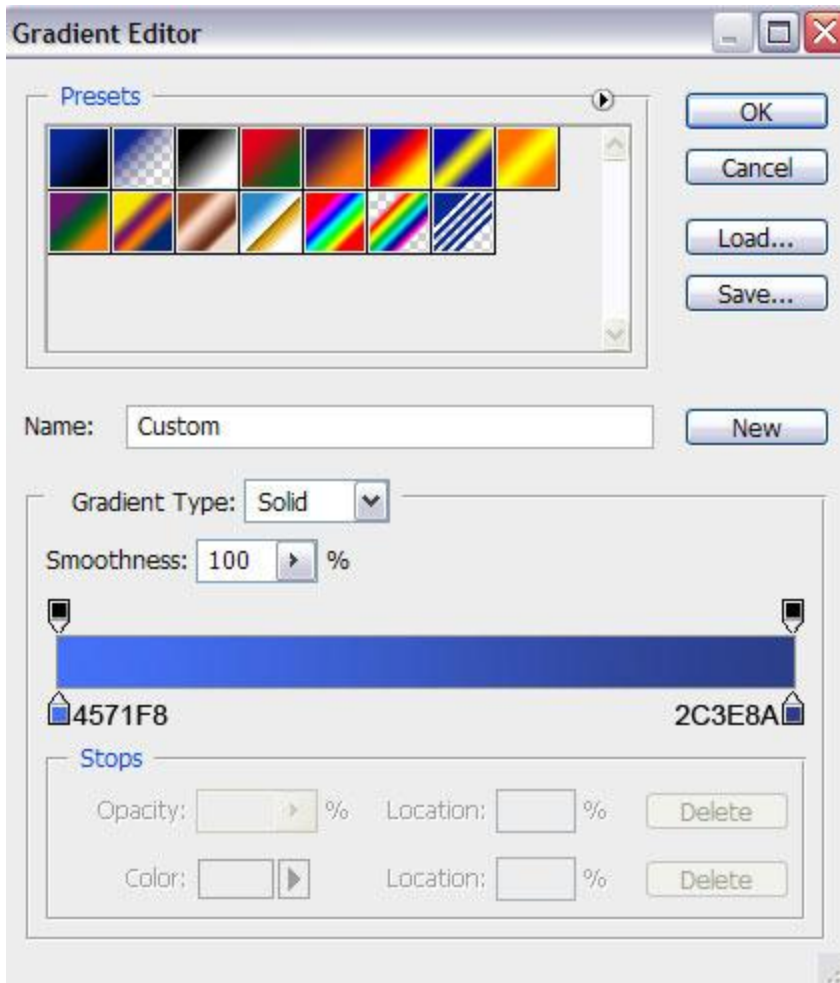




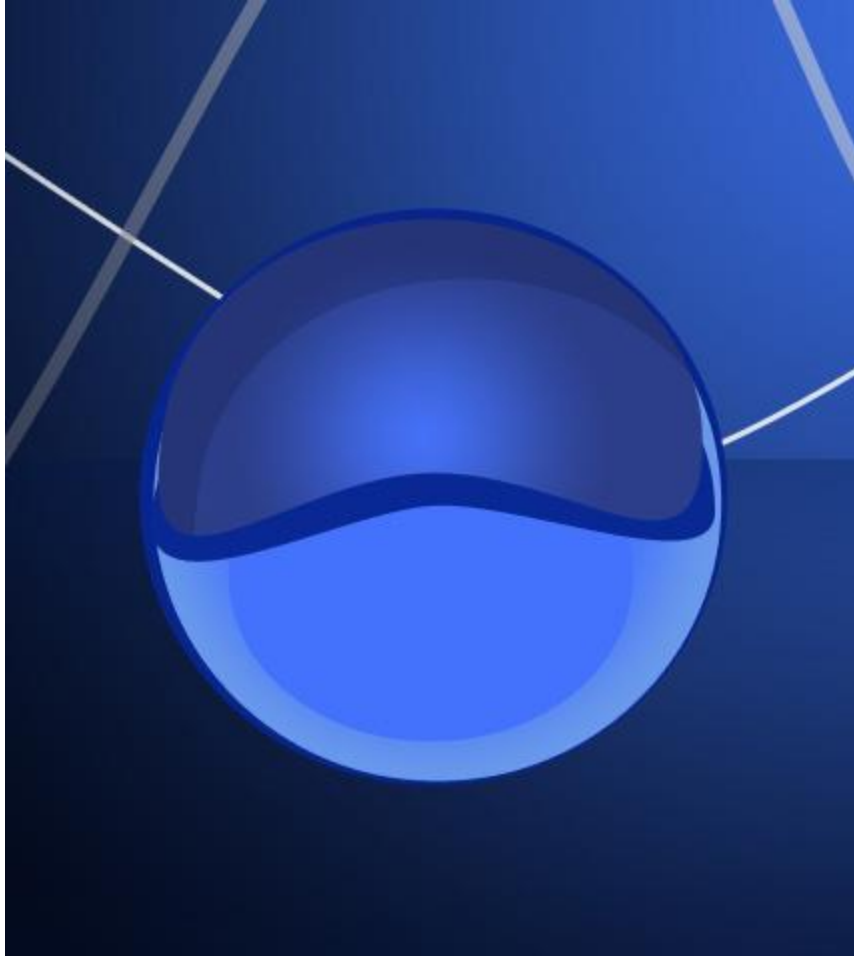
Apply **Gradient Overlay** :



Click in the **color bar** to open the **Gradient Editor** and set the **color stops** as shown. Click **OK** to close the **Gradient Editor** dialog box.



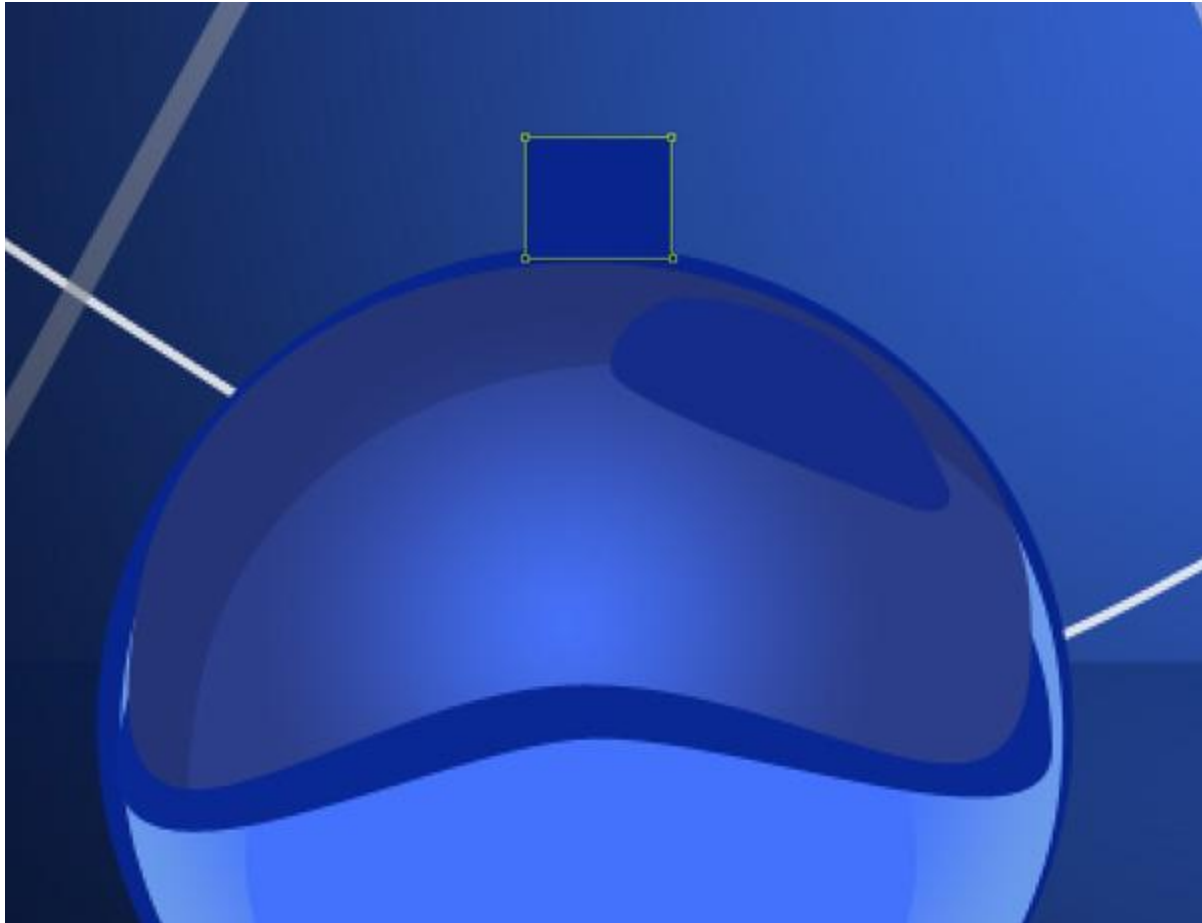
We've got the next result:



Using the **Pen Tool (P)**, it's possible to draw the shadow on the right. Choose the color **#152C8A**.



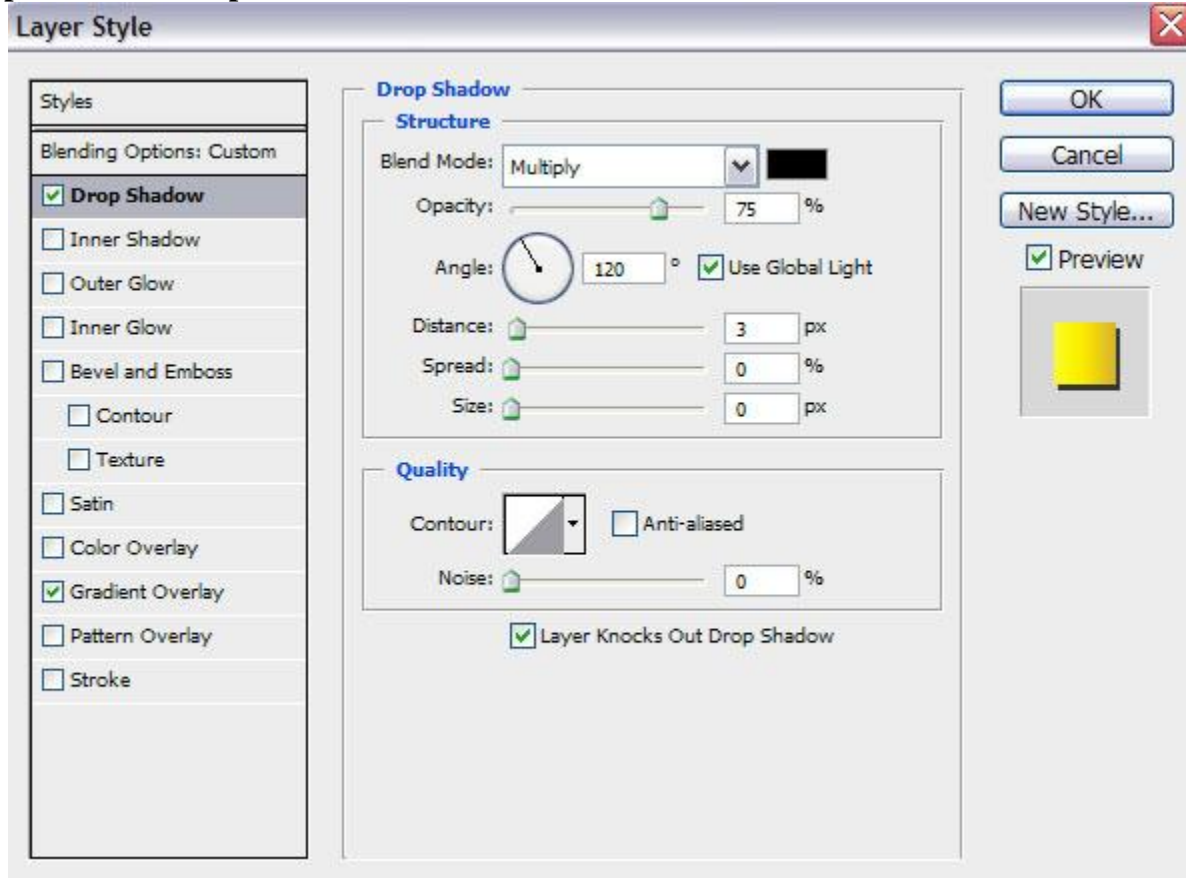
Next represent the ball's support, applying the **Rectangle Tool (U)** draw the next rectangle, the color is **#08258D**.



Select again the **Pen Tool (P)** to draw the next element of the ball's support.

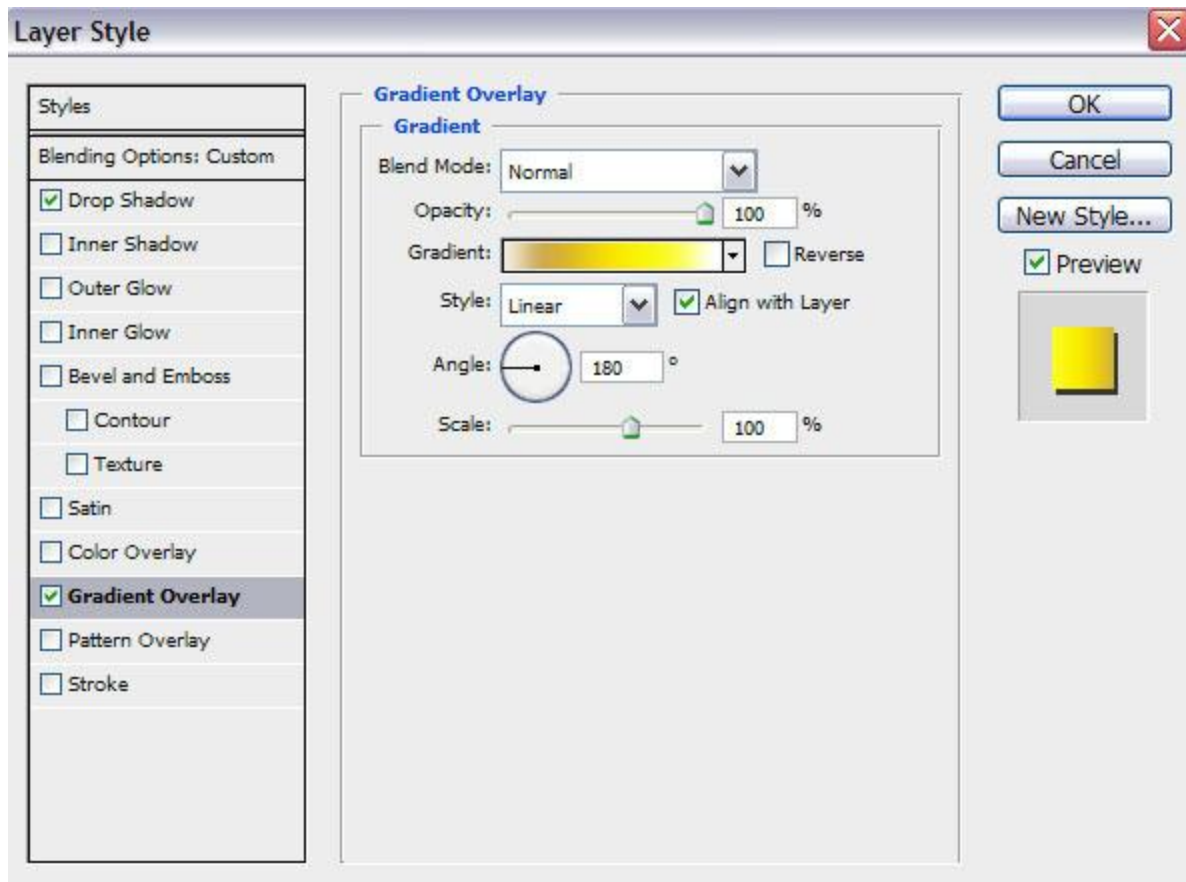


Set **Fill** to **0%** for this layer and click on **Add a layer style** icon from bottom part of the **Layers** panel, select **Drop Shadow**.

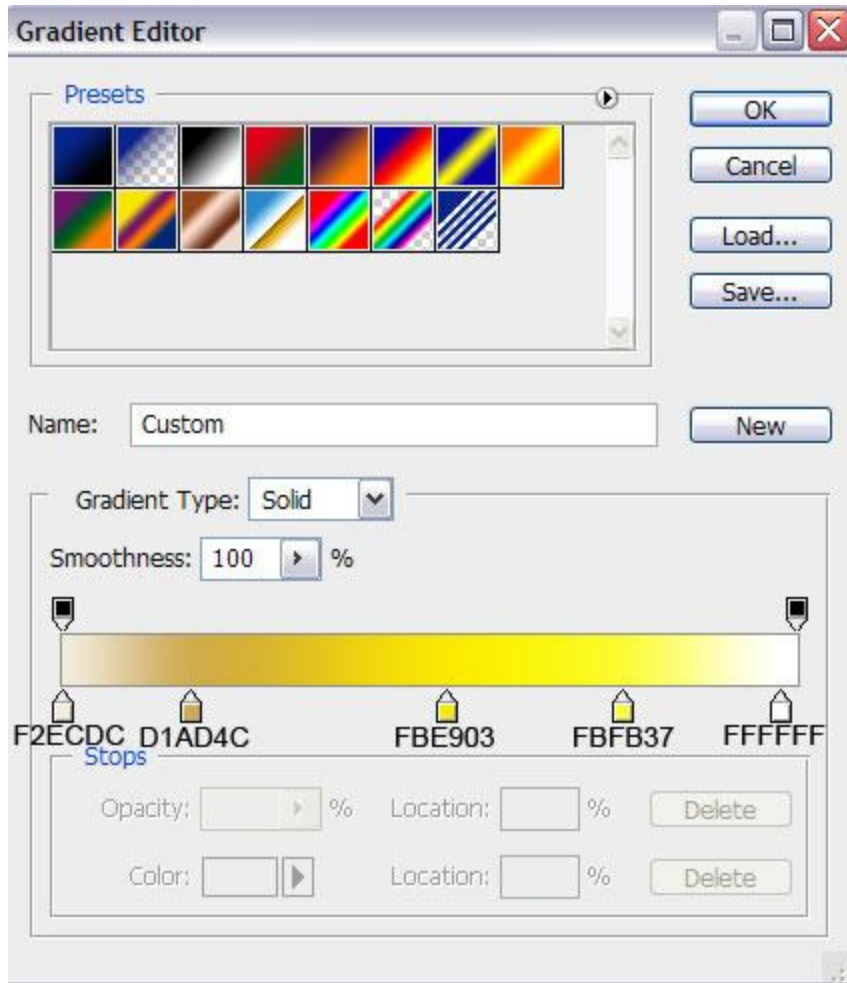


Apply **Gradient Overlay** :

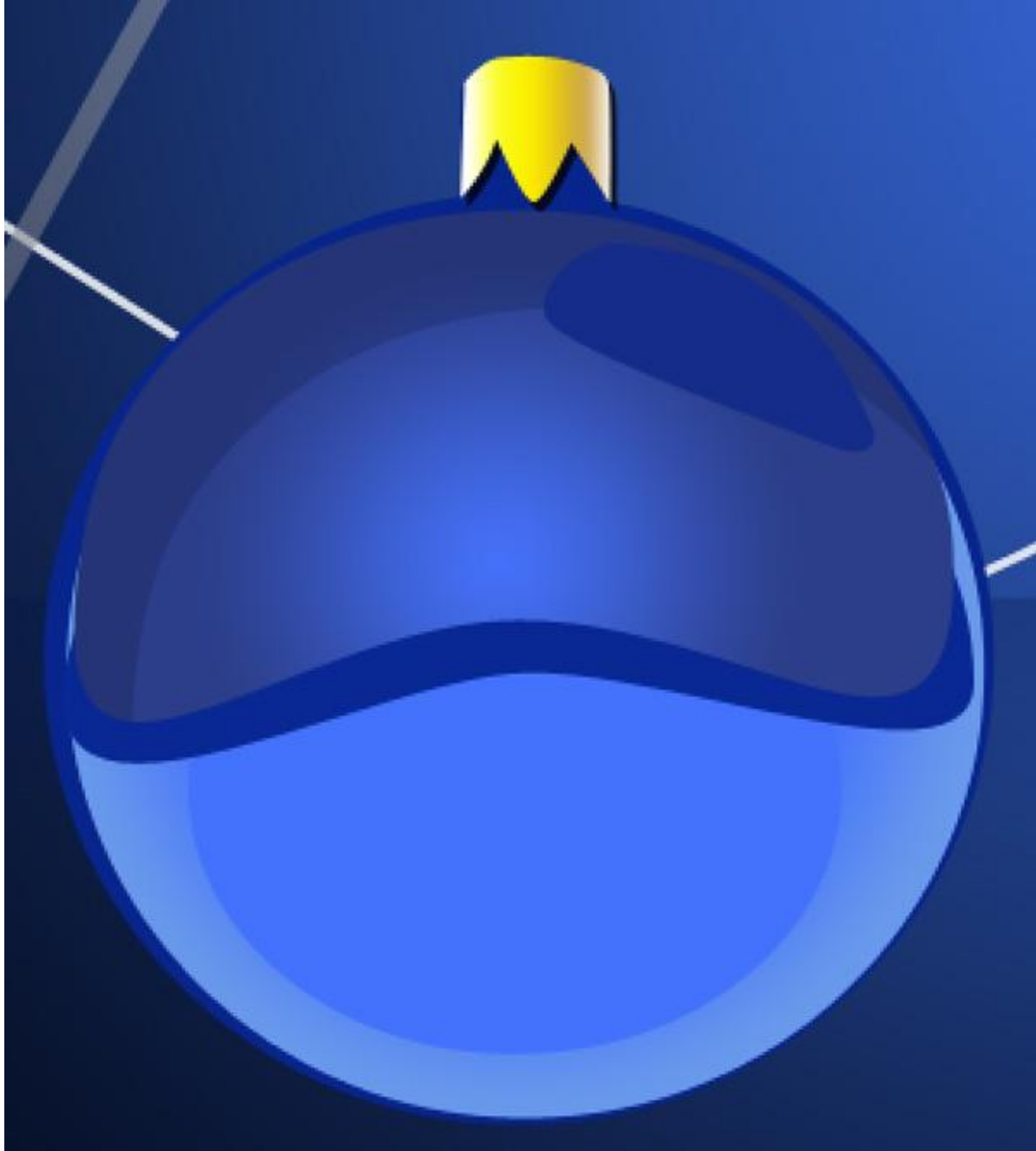




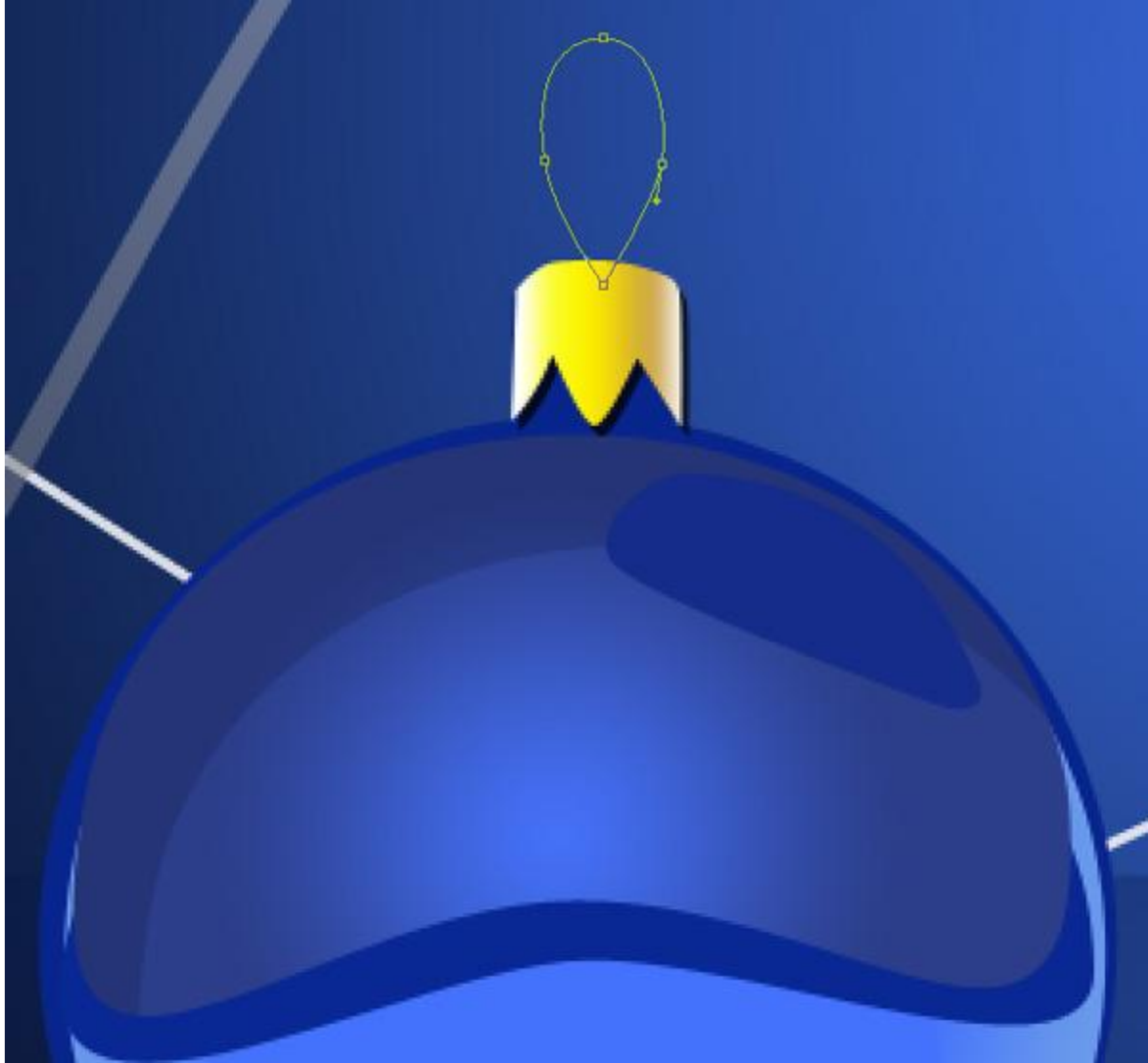
Click in the **color bar** to open the **Gradient Editor** and set the **color stops** as shown. Click **OK** to close the **Gradient Editor** dialog box.



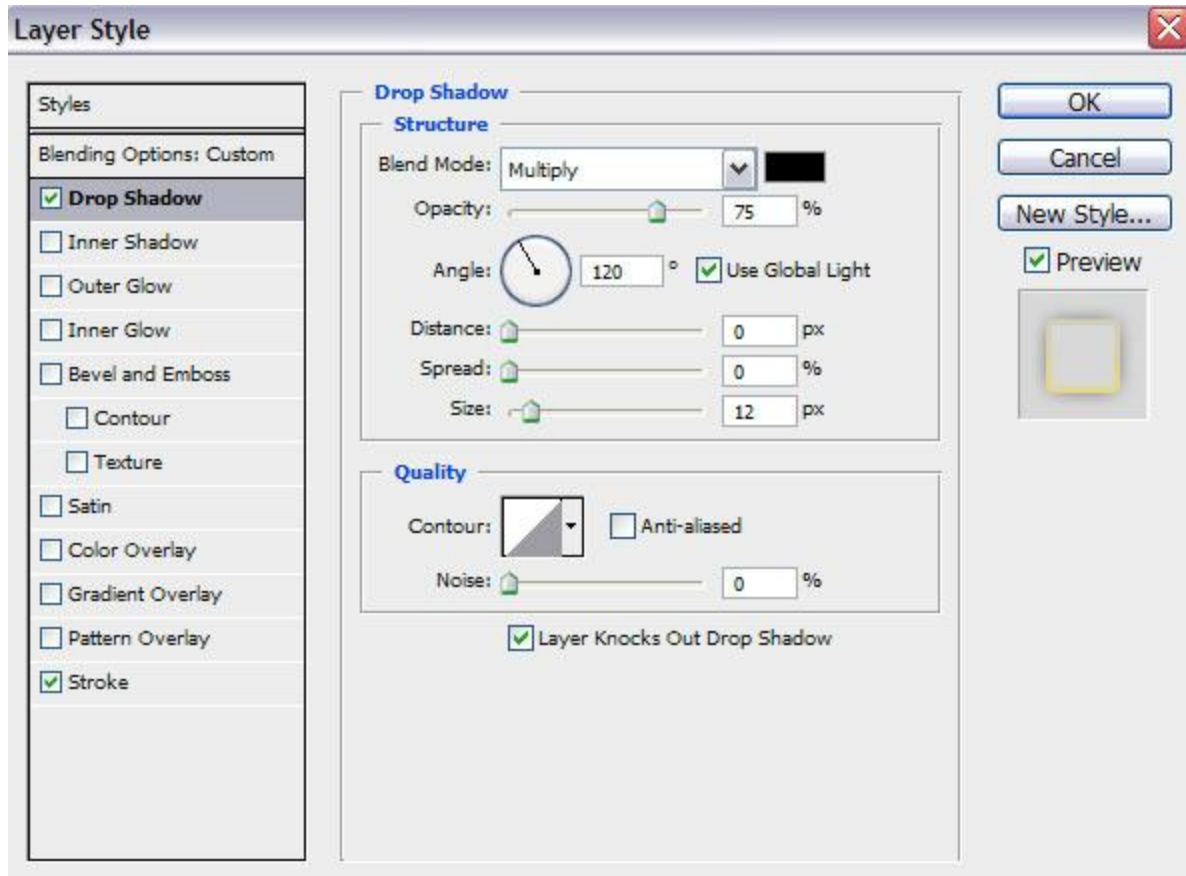
We've got the next result:



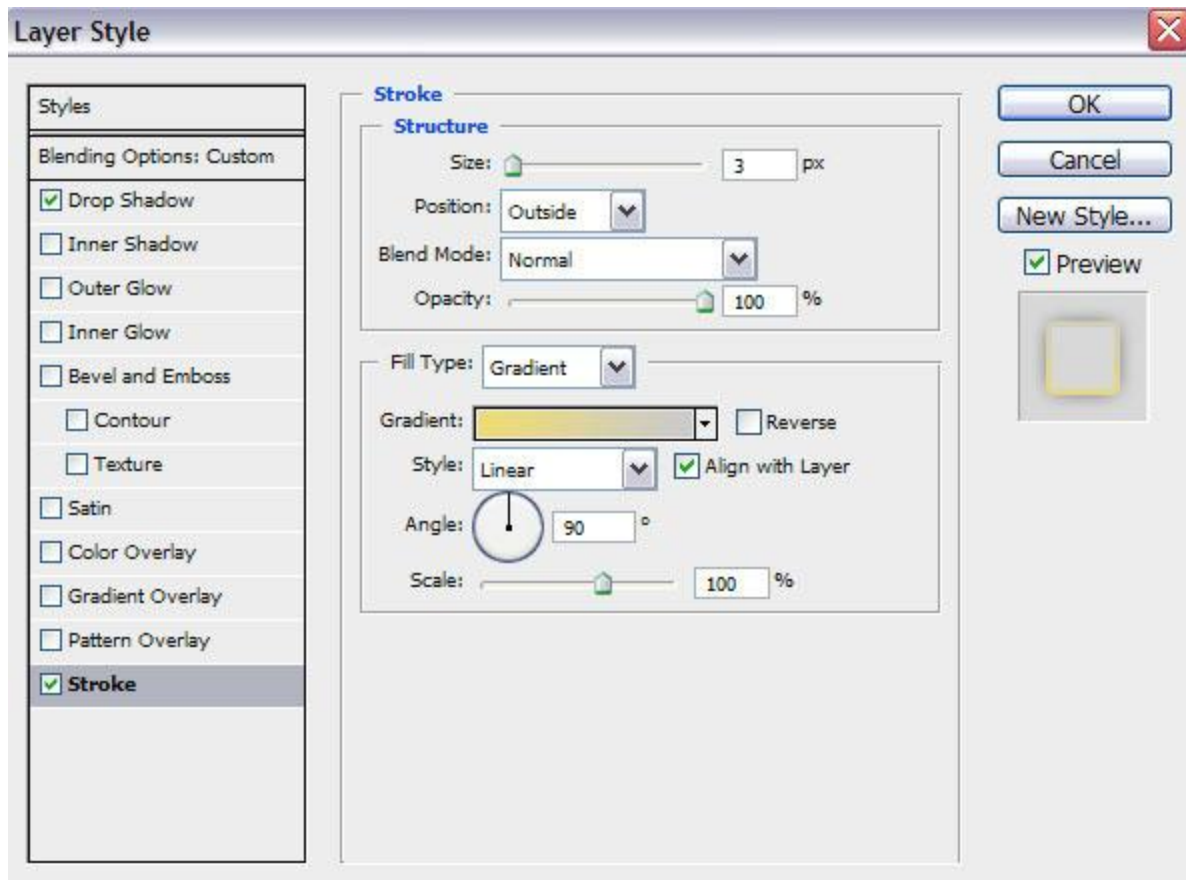
Next we'll create the ring on the ball's support. Use the **Ellipse Tool (U)** to draw the next ellipse. The shape may be corrected with the **Convert Point Tool**. This new made layer must be situated under the previous layer on the **Layers panel**.



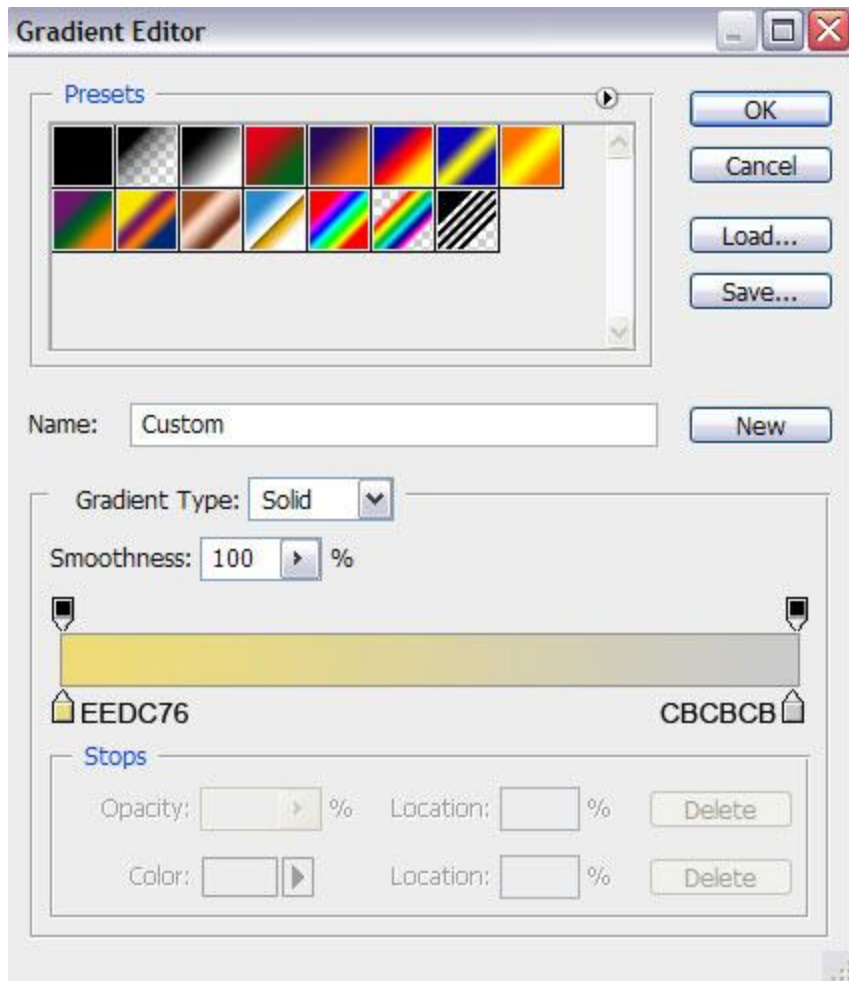
Set **Fill** to **0%** for this layer and click on **Add a layer style** icon from bottom part of the **Layers** panel, select **Drop Shadow**.



Add **Stroke**:



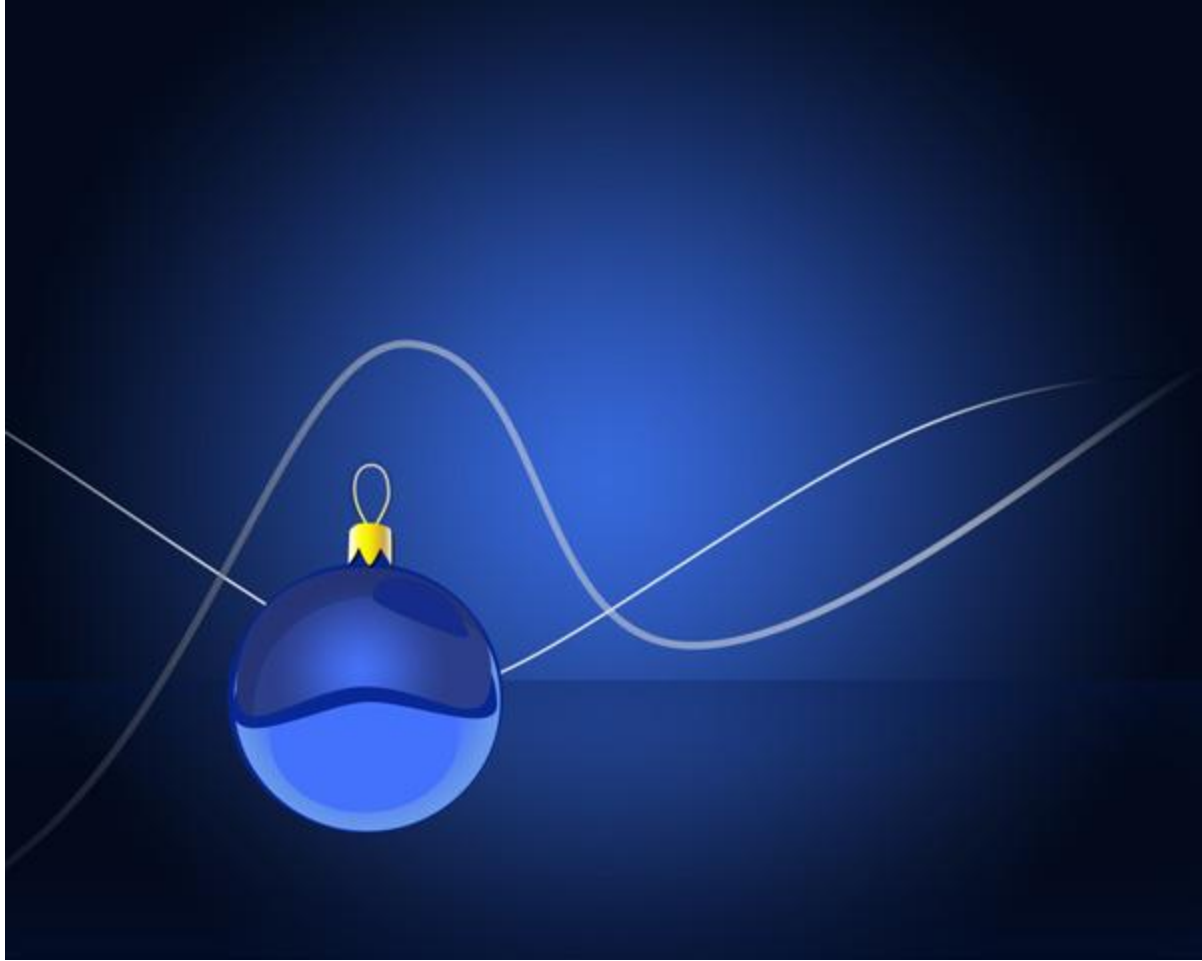
Select **Fill Type – Gradient**, click in the **color bar** to open the **Gradient Editor** and set the **color stops** as shown. Click **OK** to close the **Gradient Editor** dialog box.



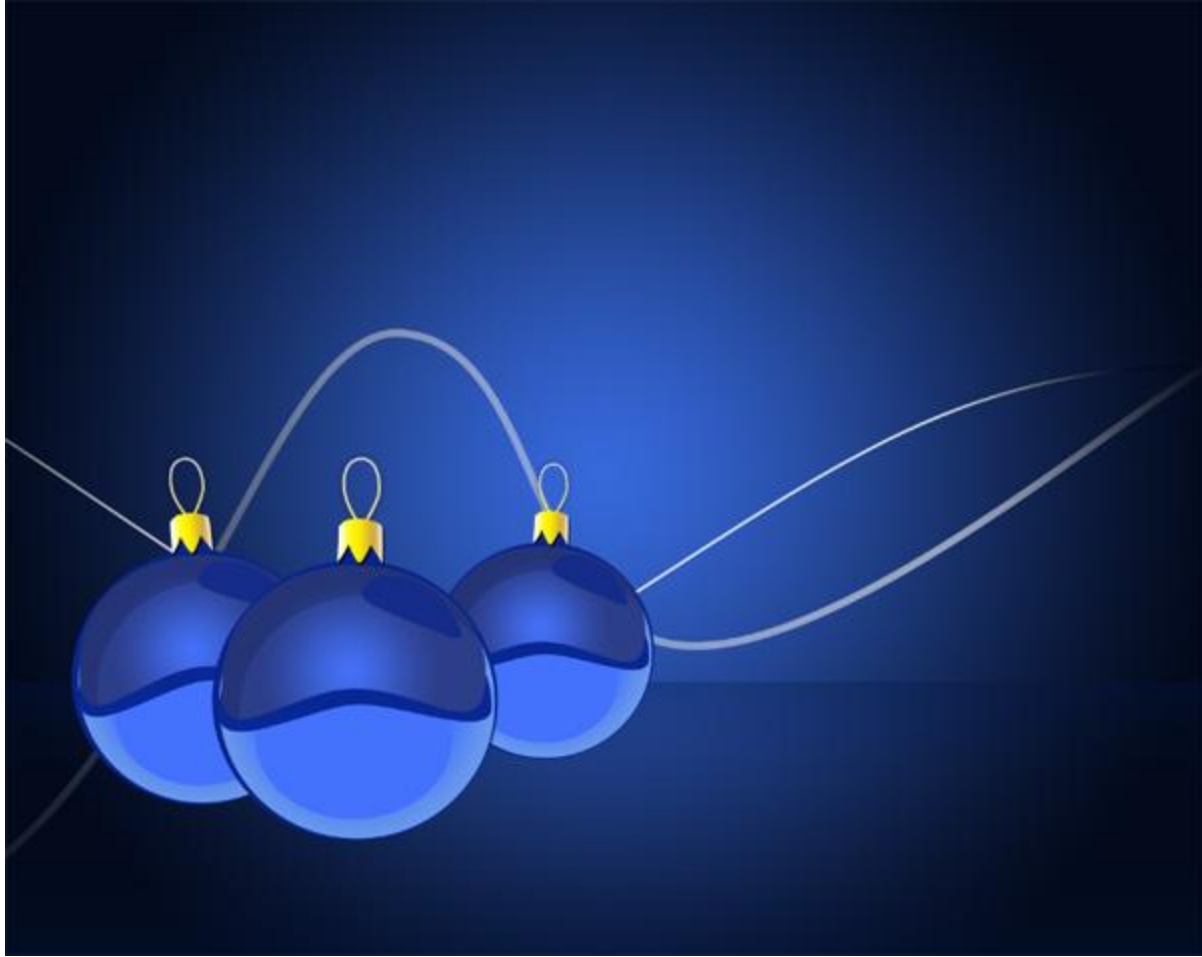
We've got the next result:



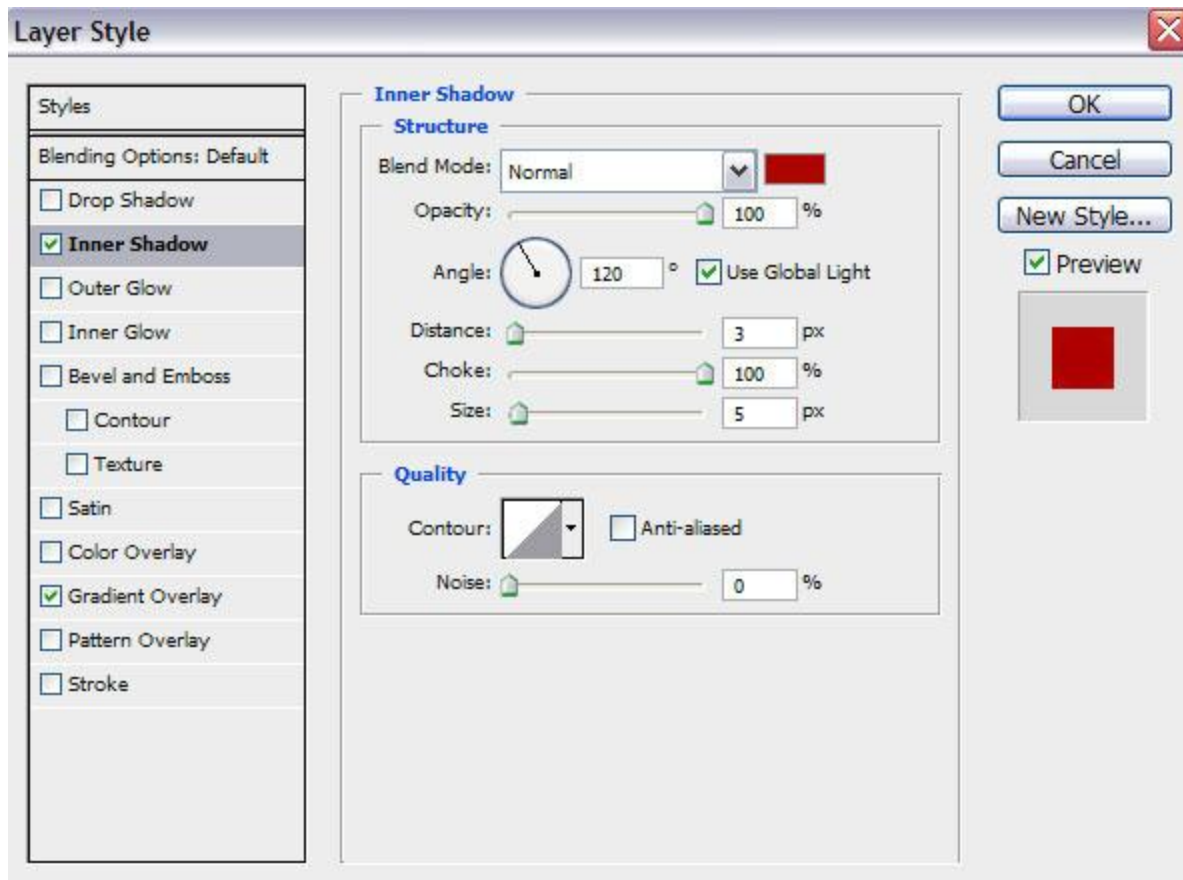




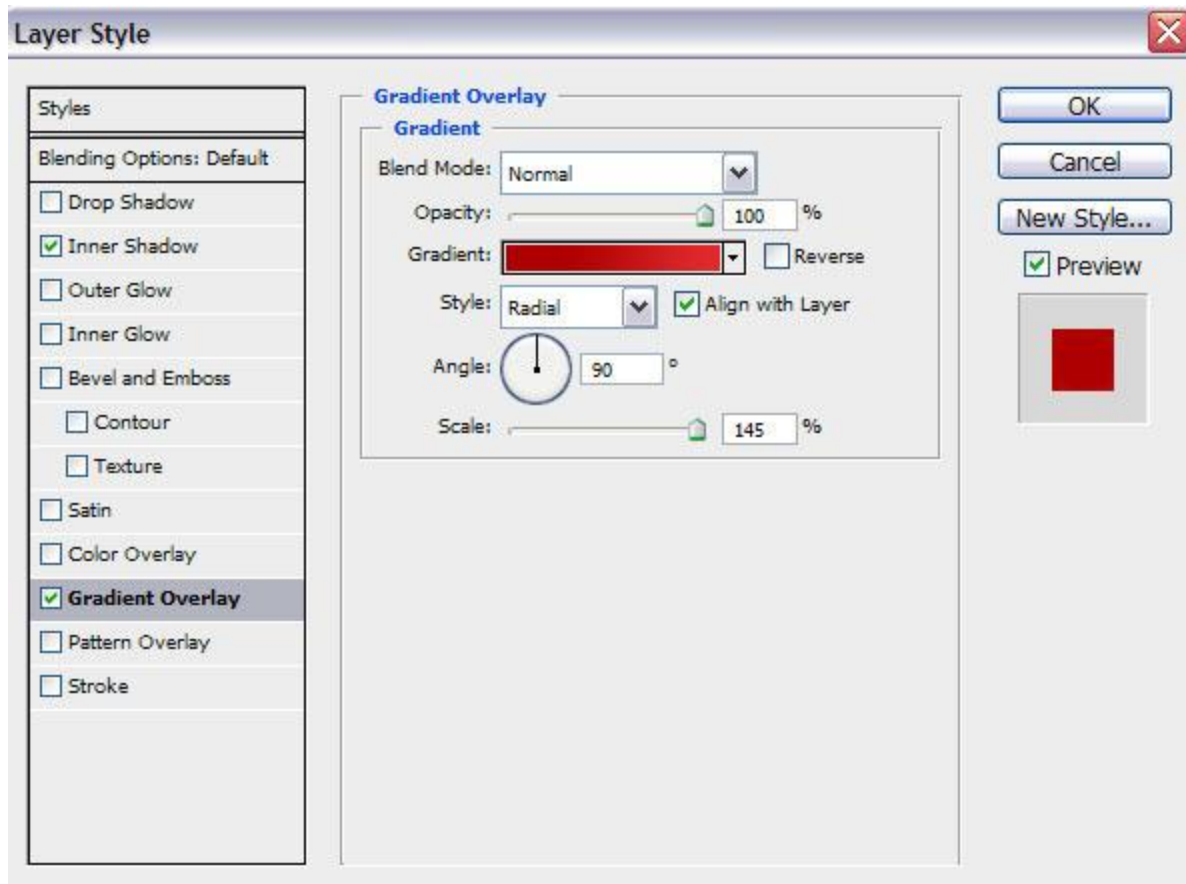
Combine in a group all the layers composing the Christmas ball (press **CTRL** button to select the necessary layers and hold on the left mouse's button while dragging the selected layers on **Create a new group** icon from bottom part of the **Layers panel**). Make two copies of the represented group and then select **Free Transform (Ctrl+T)** command to change the copies' sizes, placing them under the layers belonging to the blue ball.



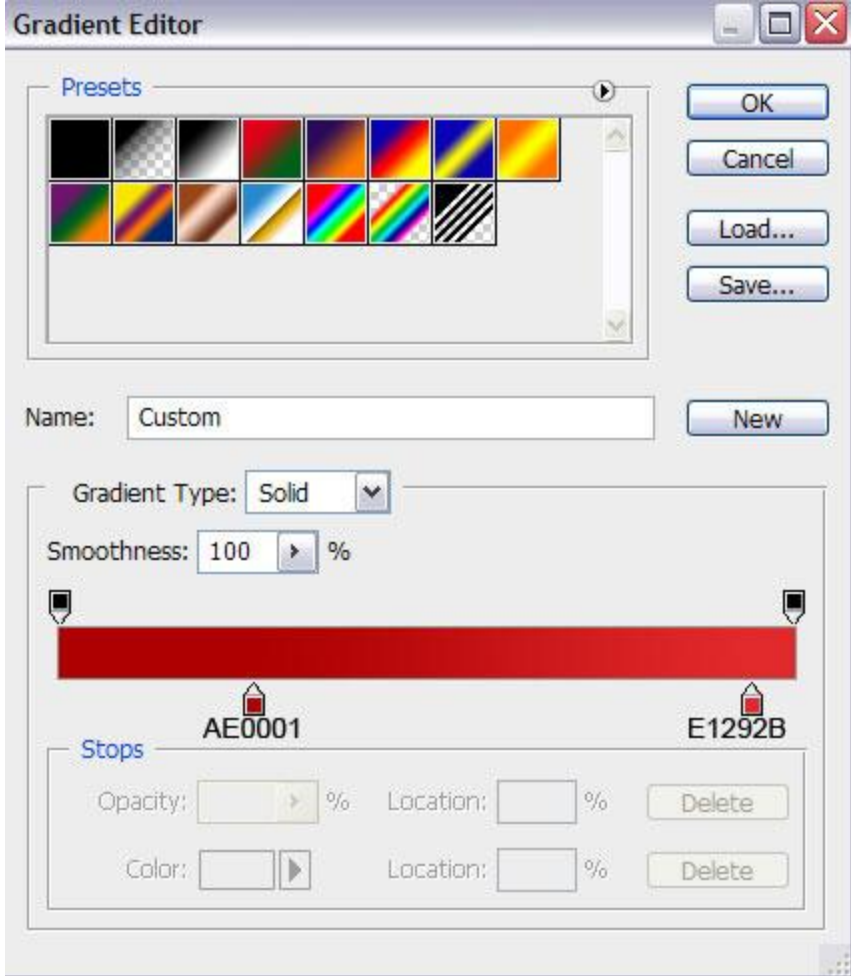
Change the **Layer Styles** for the copied layers to get a red and green nuance for the copies.  
The settings for the **red ball**. The primary layer: **Inner Shadow**:



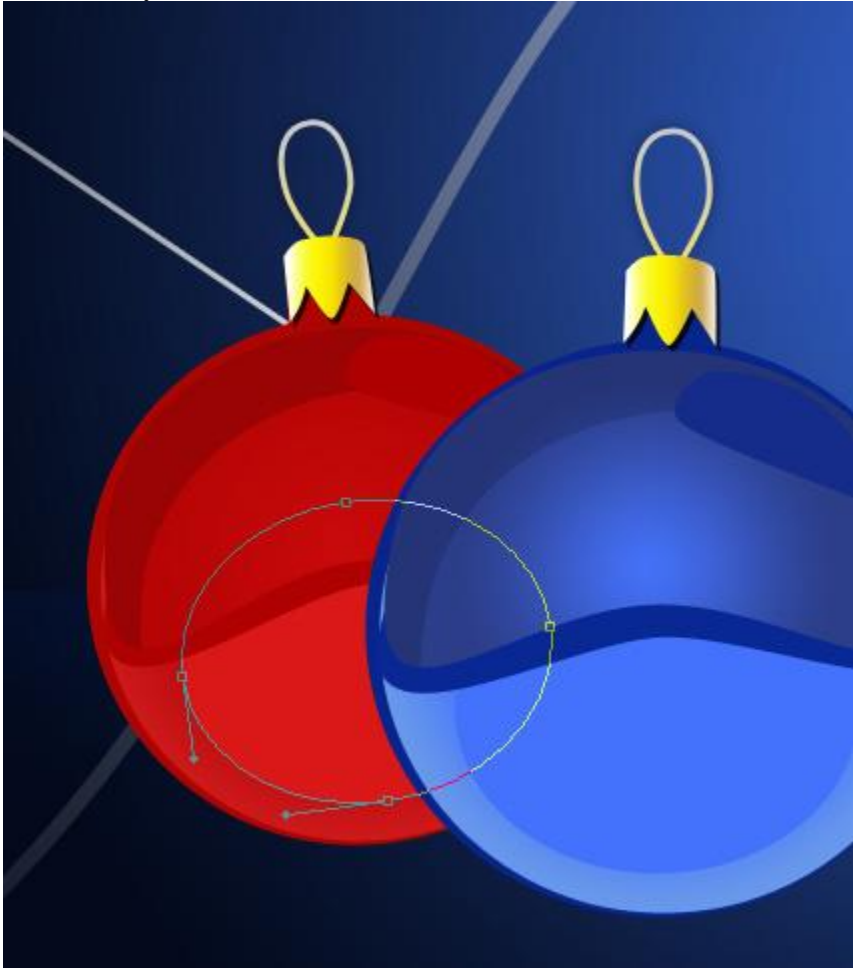
**Gradient Overlay :**



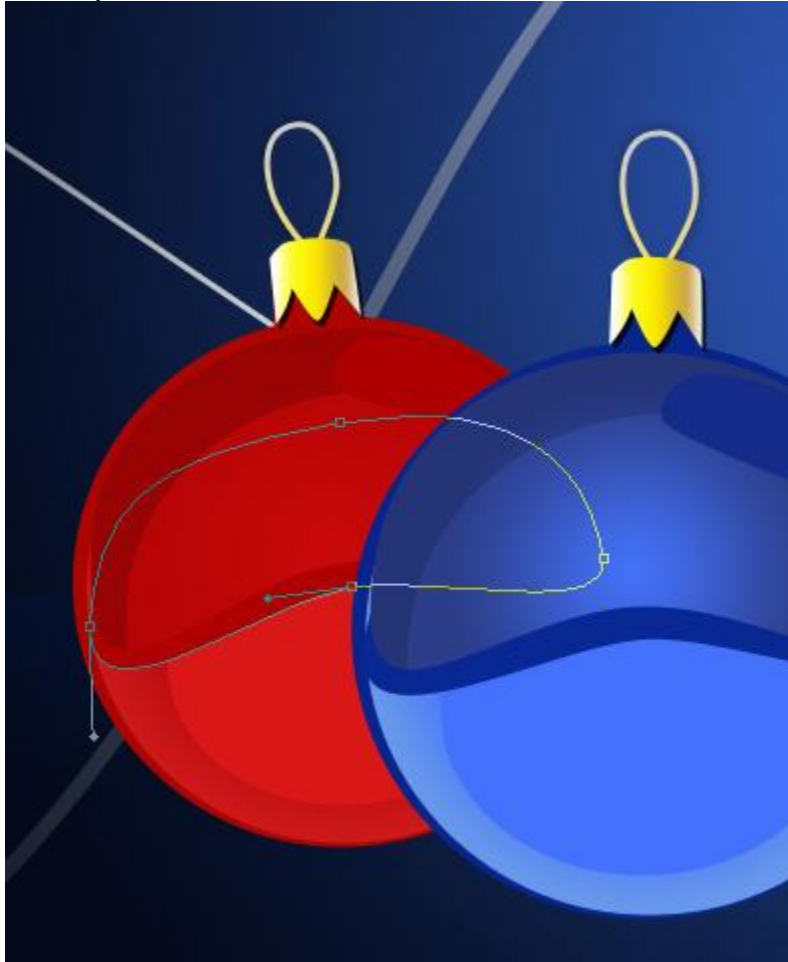
Click in the **color bar** to open the **Gradient Editor** and set the **color stops** as shown. Click **OK** to close the **Gradient Editor** dialog box.



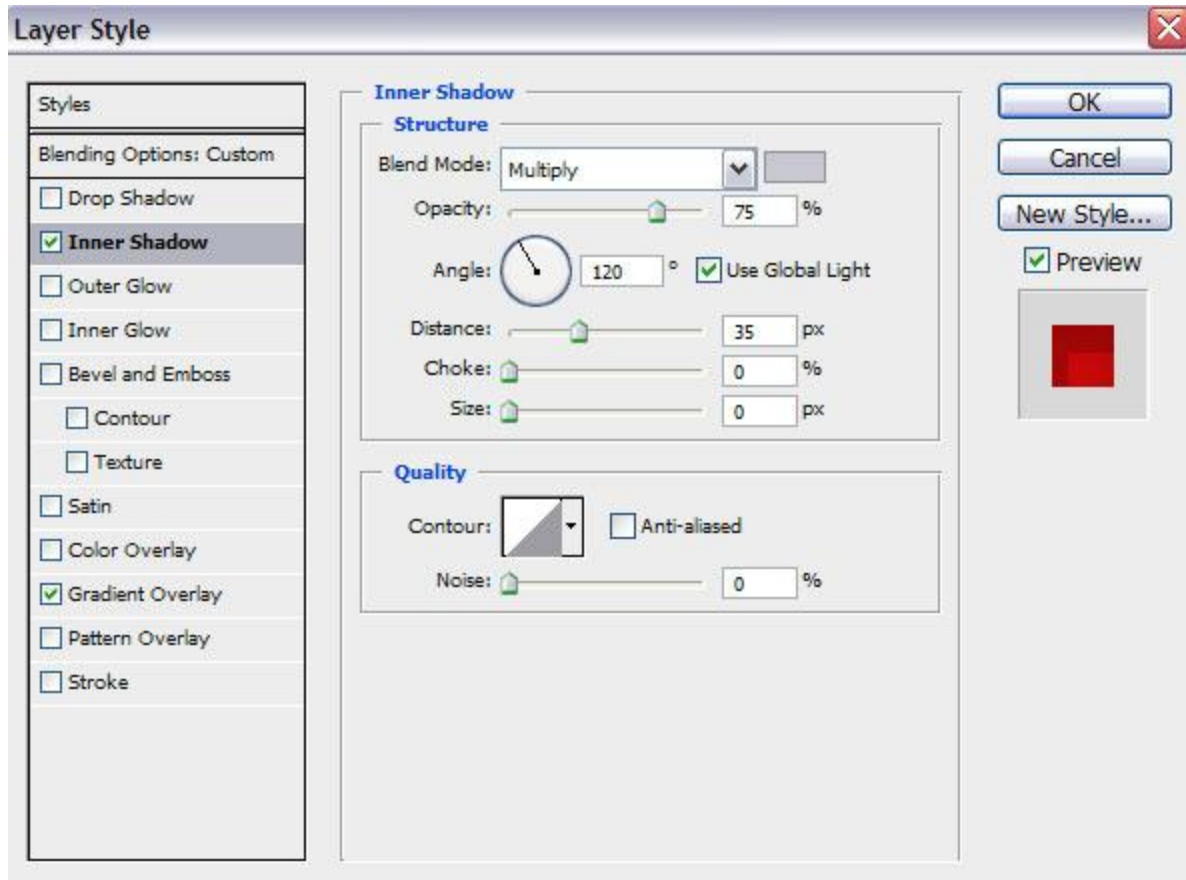
The next layer has the color #DA1818:



Next layer has the color **#AF0102**:

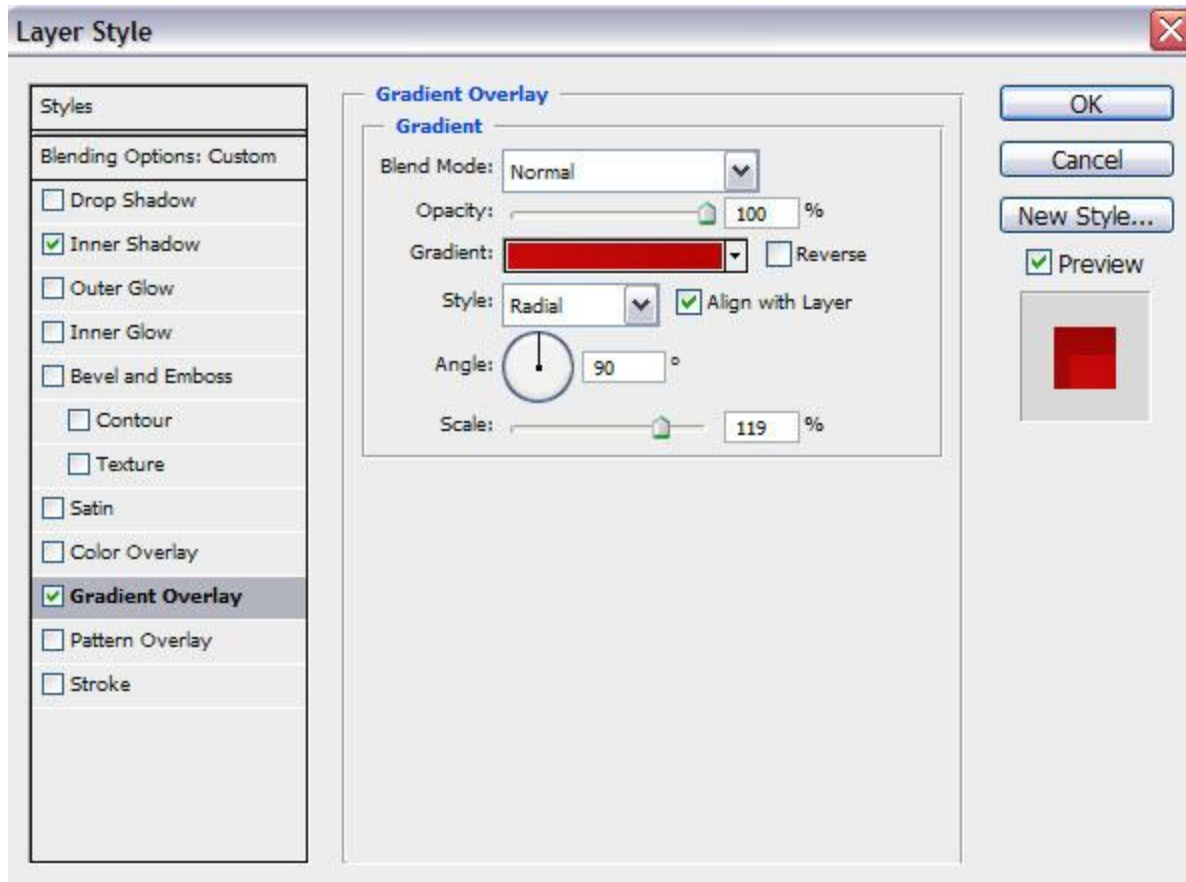


Next we have to change the settings for the top part of the ball: set **Fill** to **0%** and change the settings for **Inner Shadow**:

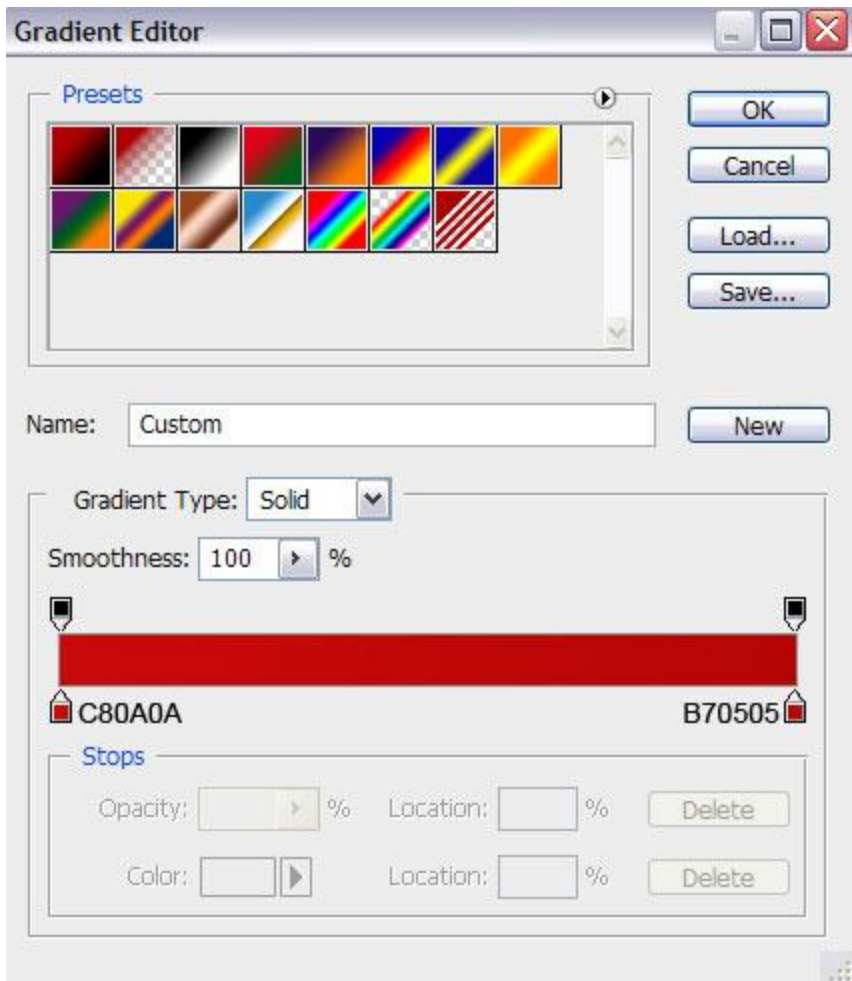


Settings for **Gradient Overlay** :





Click in the **color bar** to open the **Gradient Editor** and set the **color stops** as shown. Click **OK** to close the **Gradient Editor** dialog box.



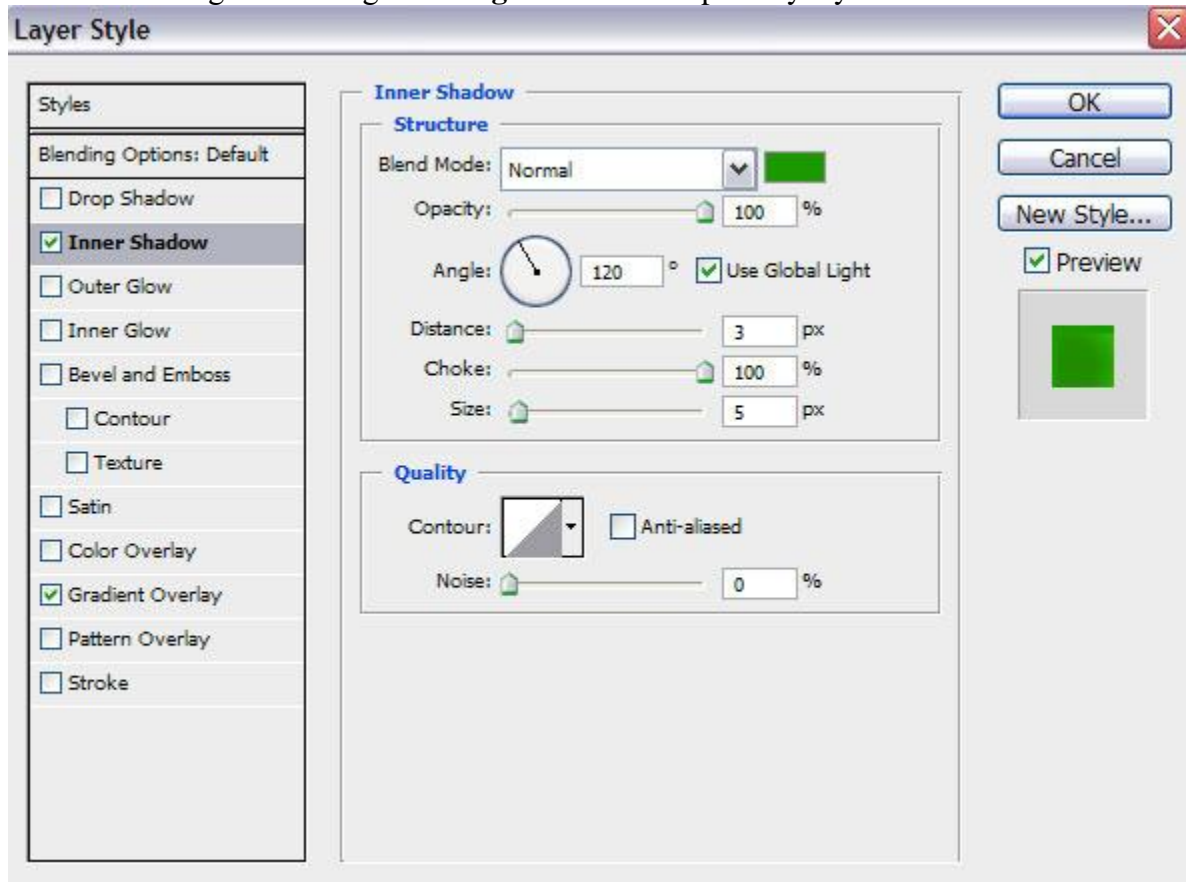
This is the color of the lateral shadow – #AE0001:



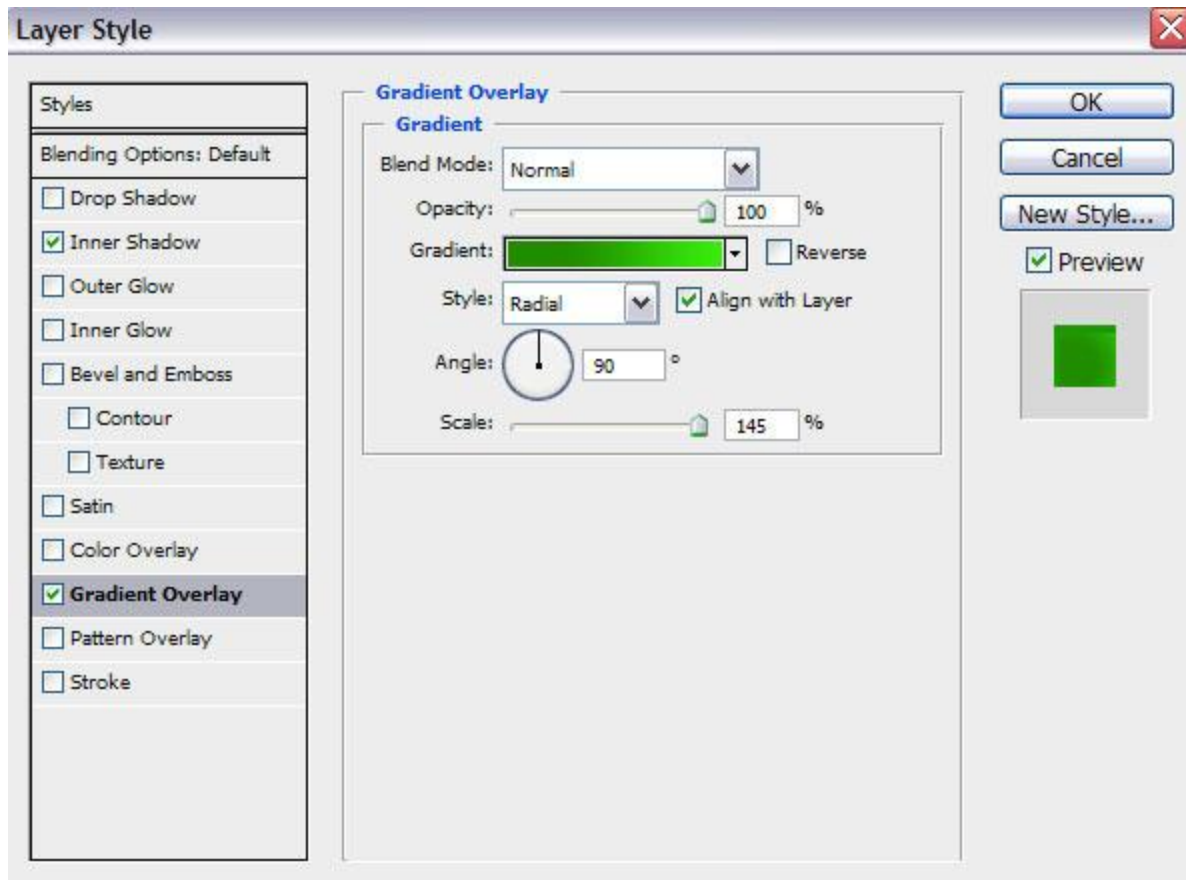
The color of the ball's support is #AC0500:



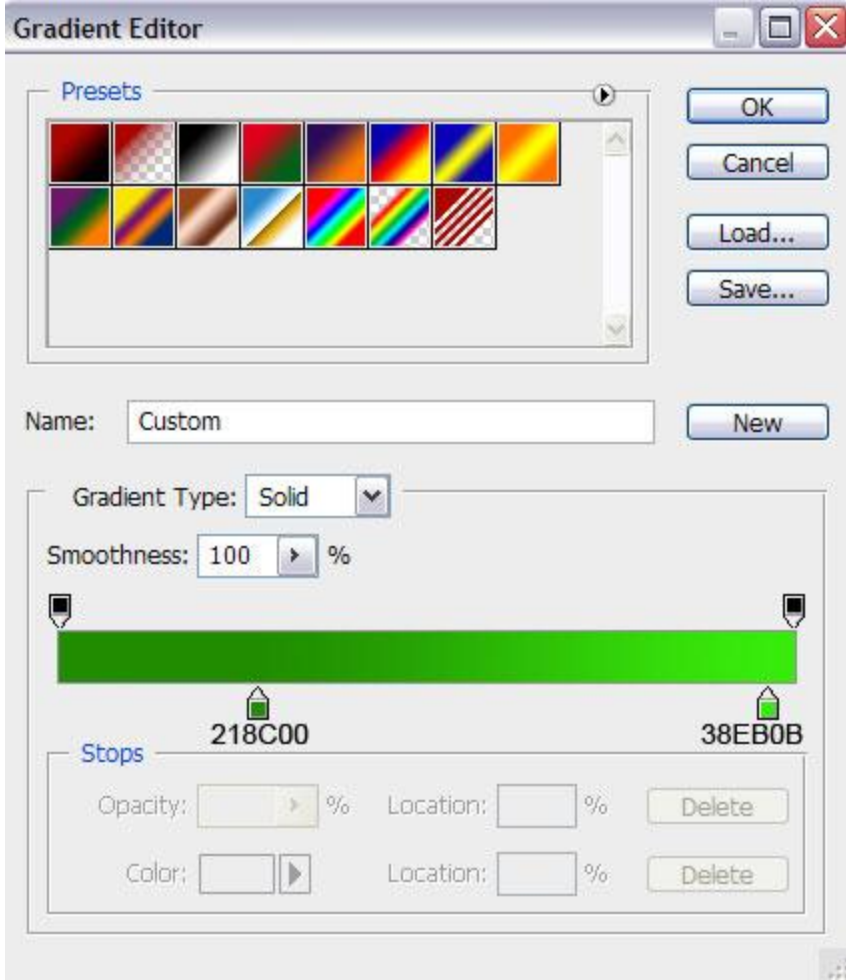
Next we'll change the settings for the **green ball**. The primary layer: **Inner Shadow**:



Settings for **Gradient Overlay**



Click in the **color bar** to open the **Gradient Editor** and set the **color stops** as shown. Click **OK** to close the **Gradient Editor** dialog box.



The next layer has the color #2CAB02:

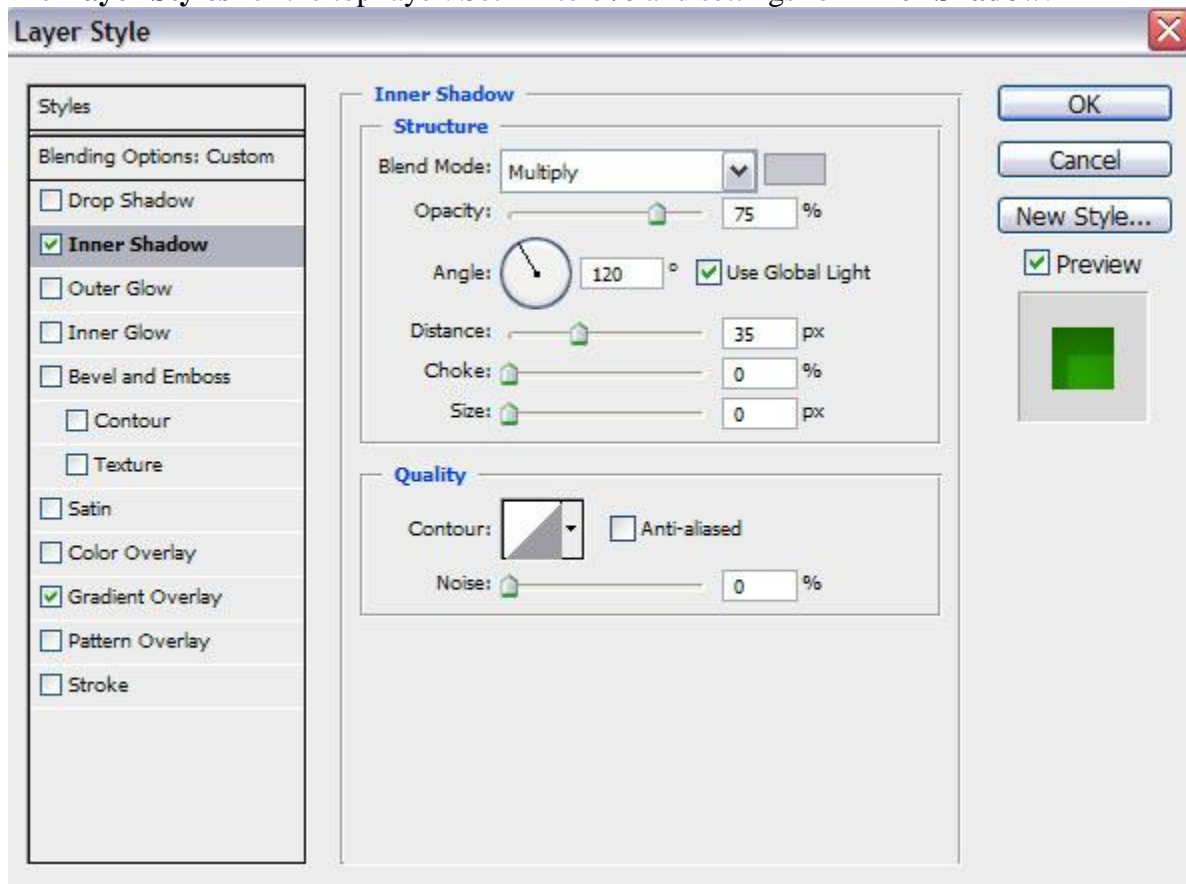




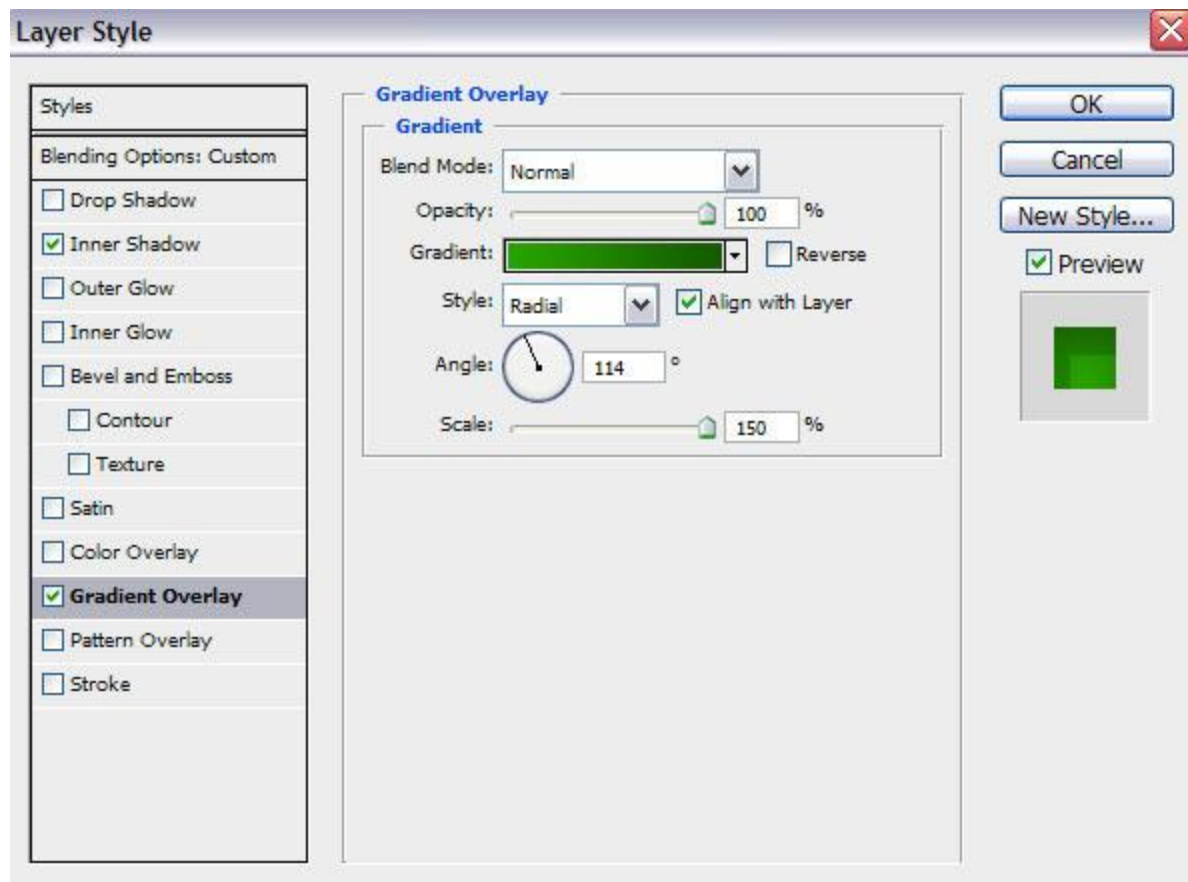
Next layer has the color #1B6802:



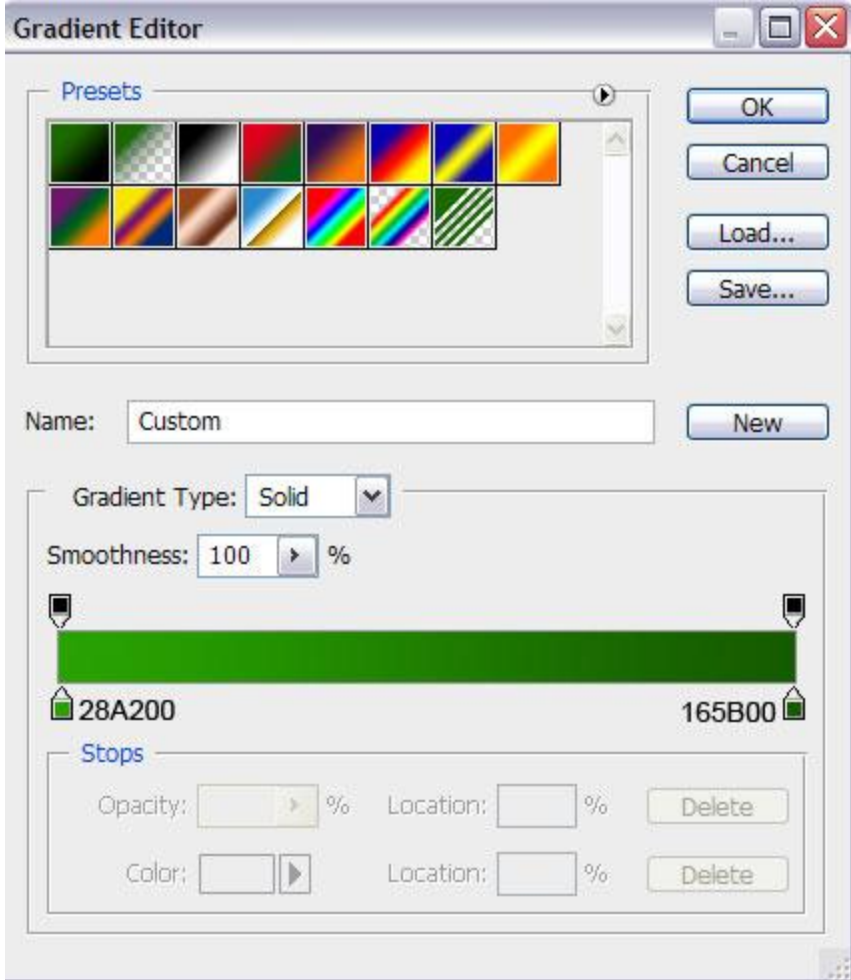
The **Layer Styles** for the top layer. Set **Fill** to **0%** and settings for **Inner Shadow**:



Settings for **Gradient Overlay** :



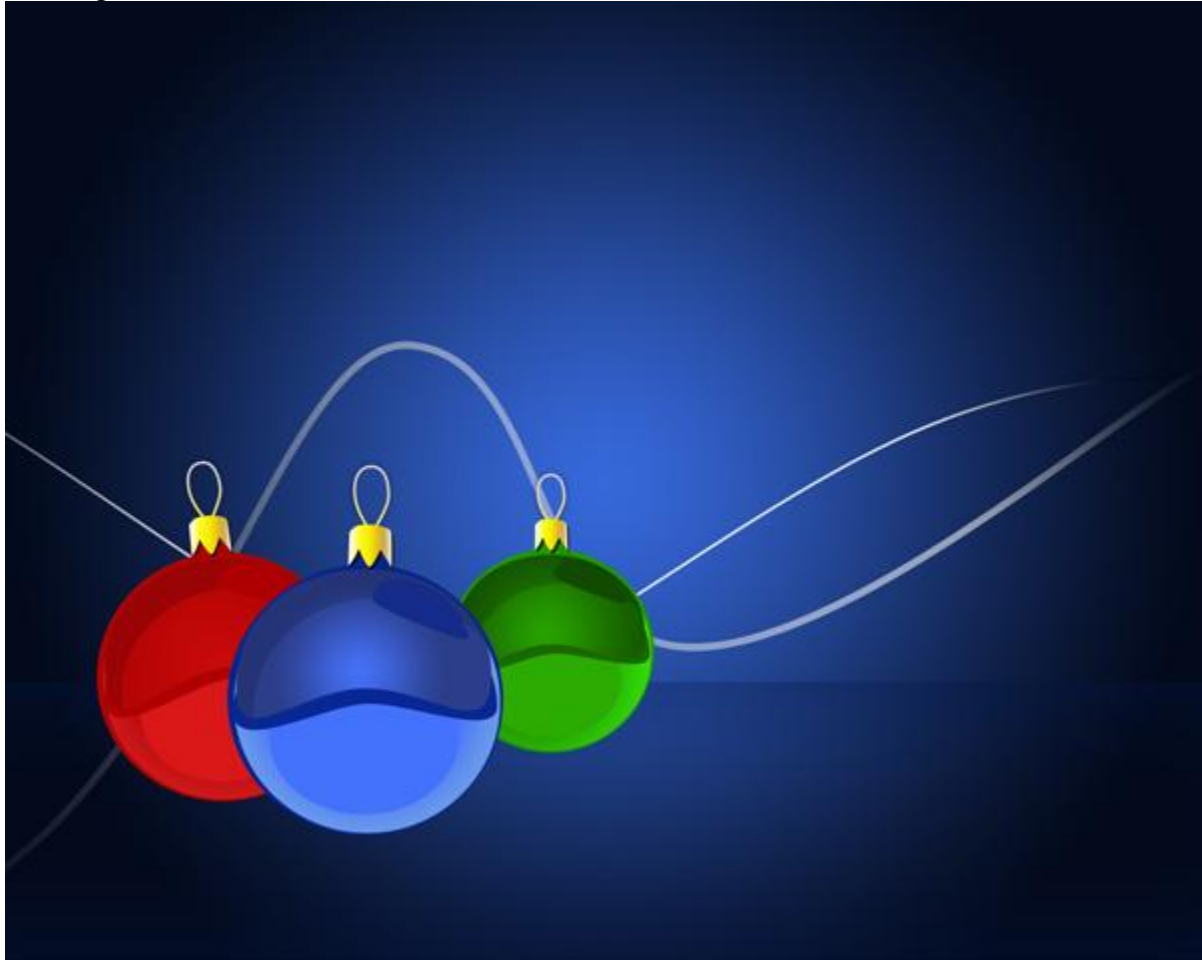
Click in the **color bar** to open the **Gradient Editor** and set the **color stops** as shown. Click **OK** to close the **Gradient Editor** dialog box.



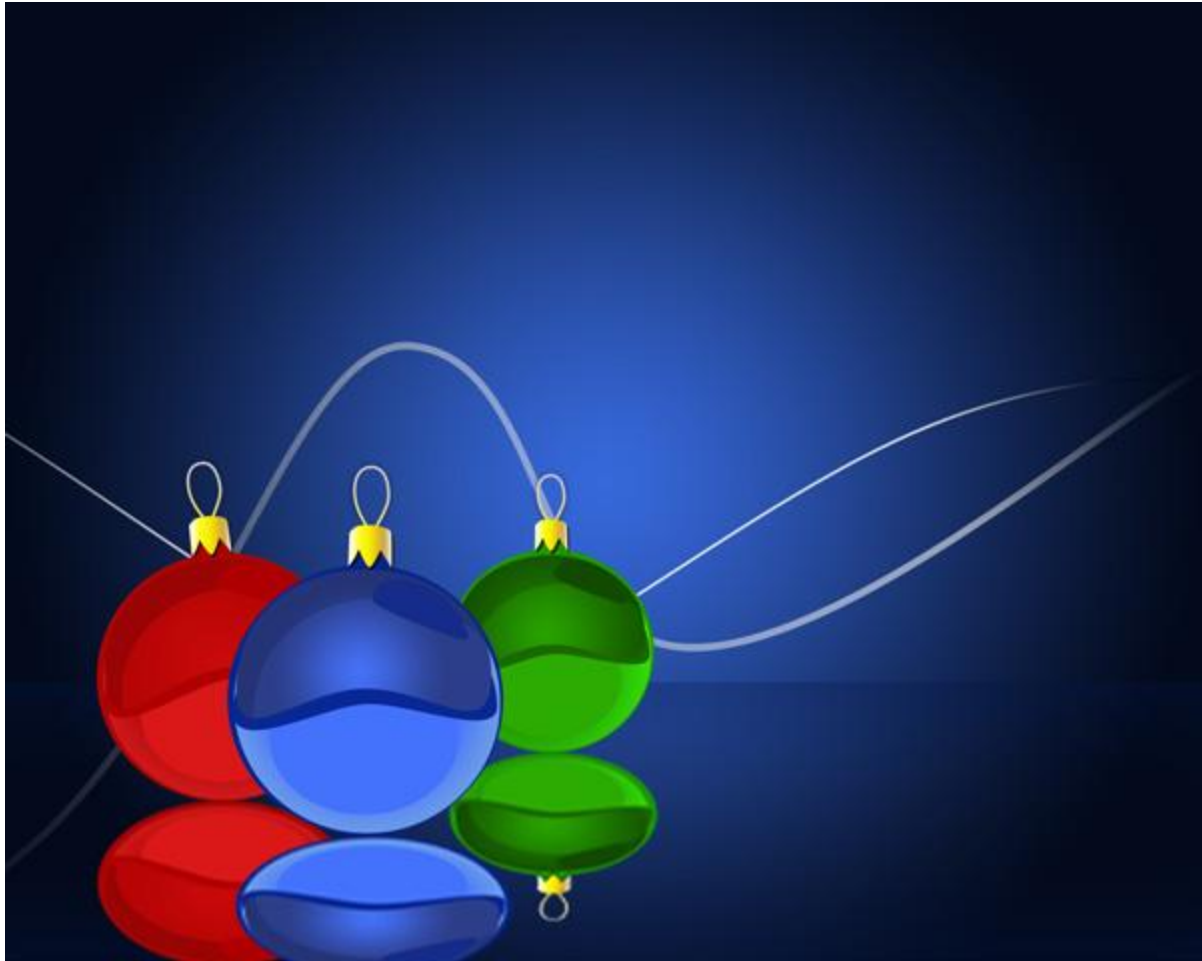
The color of the upper shadow on the right top is #124B00:



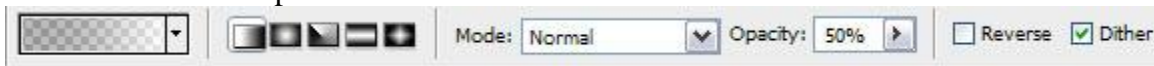
We've got the next result:



Make a copy of each ball's group. **Merge Down** into a single layer by pressing **Ctrl+E**. Do this operation with each copy. The copies may be turned over with the **Free Transform (Ctrl+T)** command, changing the sizes, as it is represented on the next picture. This way we'll get a reflection.



Insert the mask on each layer containing the reflection by choosing **Add layer mask** on the bottom part of the **Layers panel** . Take the **Gradient Tool (G)** and open the **Gradient Editor** from **Options Bar**. Choose the **Foreground to Transparent** gradient and apply the gradient from the bottom to top.



We've got the next result:



Use the **Ellipse Tool (U)**, try to make three similar layers for shadows and after that place them under the balls' layers. The color is white.

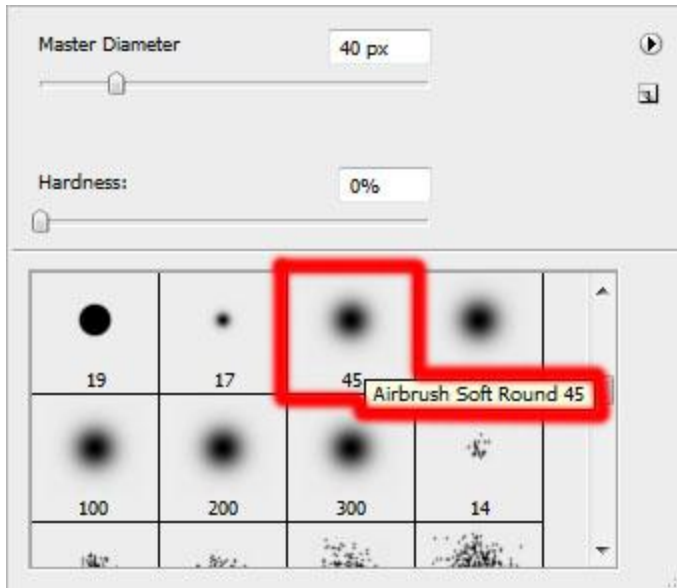




Set **Fill** to **20%** for layers containing the shadows.



Create a new layer, select **Airbrush Soft Round** brush from **Brush Tool (B)**.



Use this brush to insert several white dots of different sizes, placed around the ribbons.



Finished!